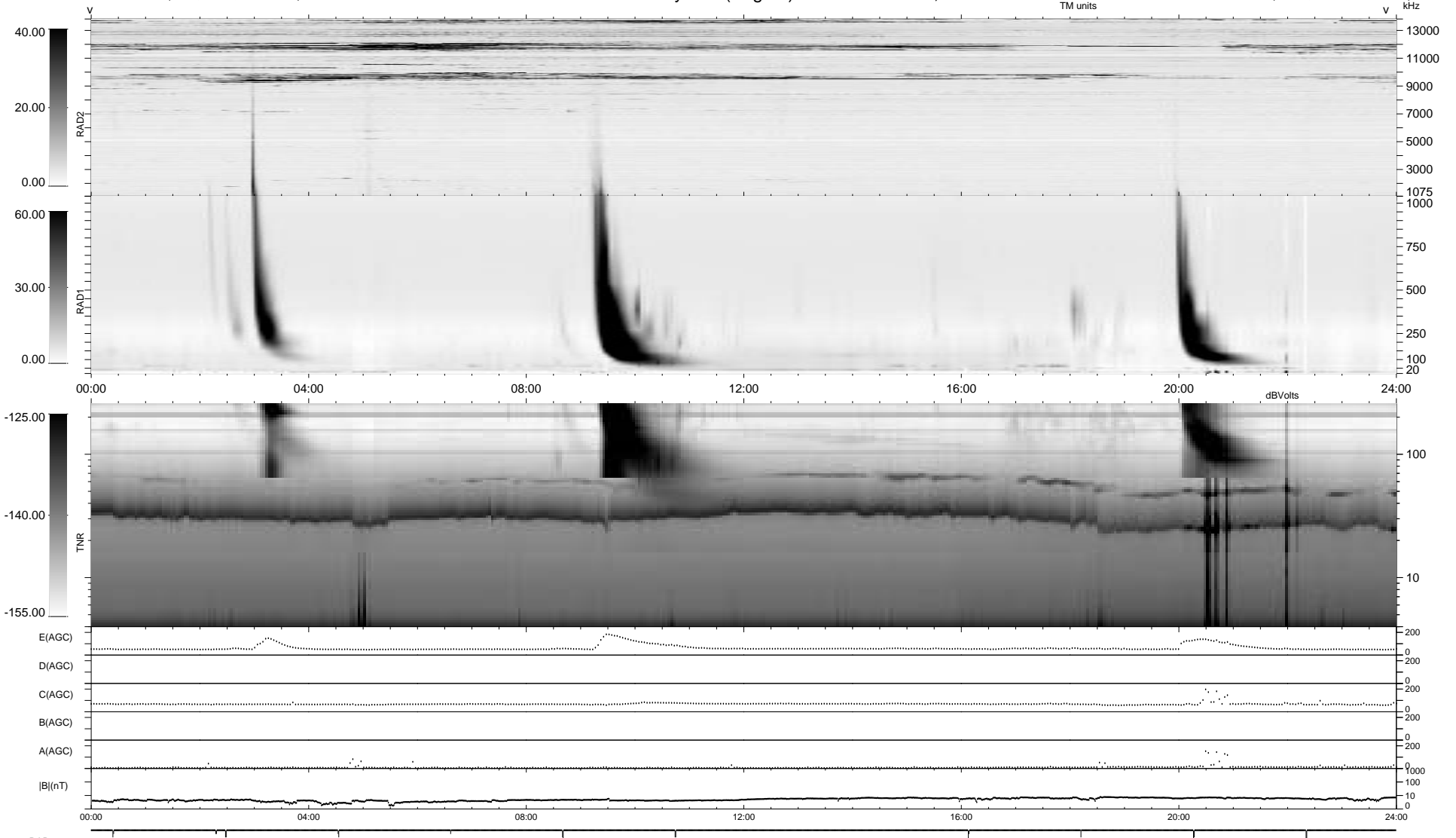


20 bad + 1858 good MF/1878MF projected (98%) - 0 missing MFs
 Avg interval = 180 secs
 Re = 105.10 (93.83, -45.76, -12.20 GSE)

1.7d VMS-SunOS LZ version = v01
 DAILY Thu Sep 25, 2008
 Re = 111.42 (101.65, -43.72, -13.03 GSE)

WIND/WAVES Summary Plot (Page 1) for 26-SEP-1995, DOY = 269



RAD2 Antenna Ey
 Mode LIN(1)
 SUM/SEP SUM
 Toggle OFF
 RAD1 Antenna Ex
 Mode LIS(0.2)
 SUM/SEP SUM
 Toggle OFF
 TNR Antenna ExEy
 Mode A-32
 Sweep ACE