

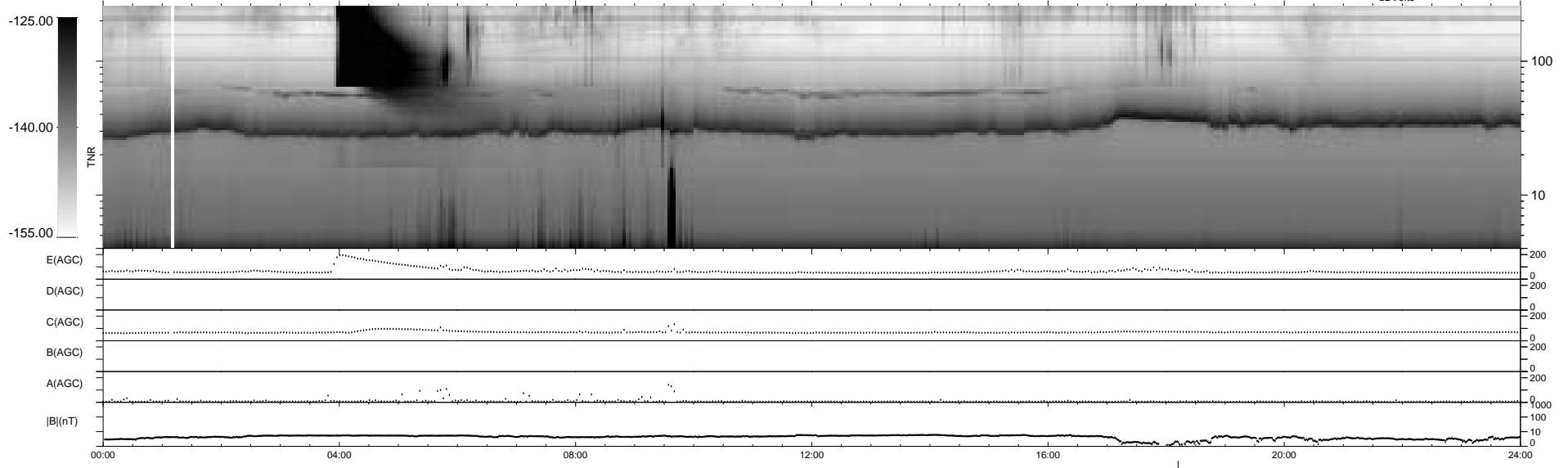
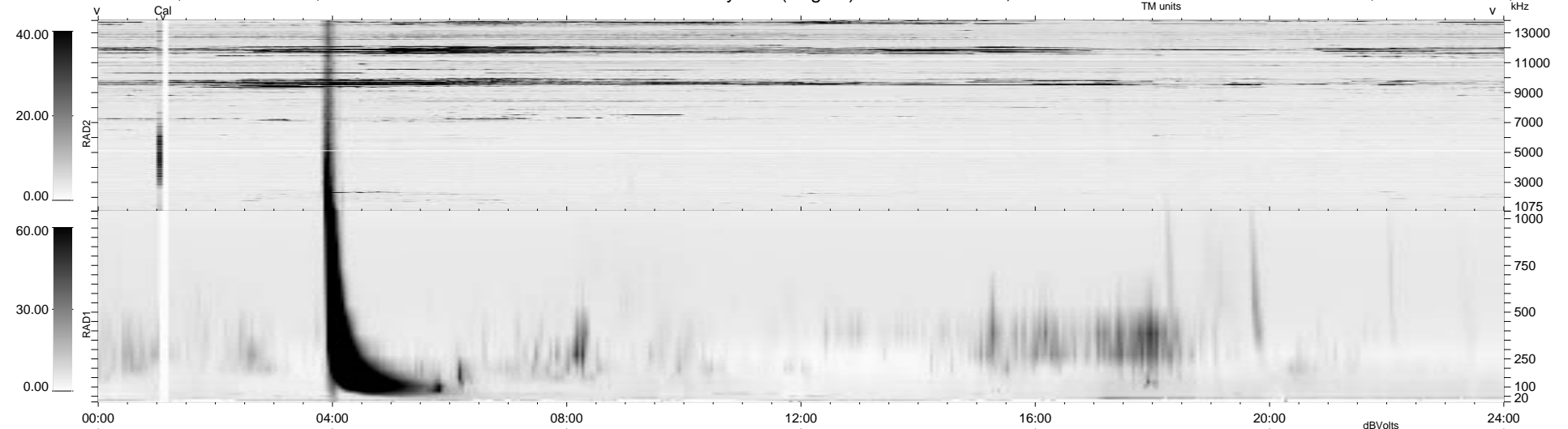
15 bad + 1862 good MF/1878MF projected (99%) - 1 missing MF
 Avg interval = 180 secs
 Re = 98.18 (85.12, -47.63, -11.24 GSE)

1.7d VMS-SunOS

LZ version = v01

WIND/WAVES Summary Plot (Page 1) for 25-SEP-1995, DOY = 268

DAILY Thu Sep 25, 2008
 Re = 105.05 (93.77, -45.77, -12.19 GSE)



```

RAD2
Antenna Ey .....
Mode LIN(1) .....
SUM/SEP SUM .....
Toggle OFF .....

RAD1
Antenna Ex .....
Mode LIS(0.2) .....
SUM/SEP SUM .....
Toggle OFF .....

TNR
Antenna ExEy .....
Mode A-32 .....
Sweep ACE .....
  
```