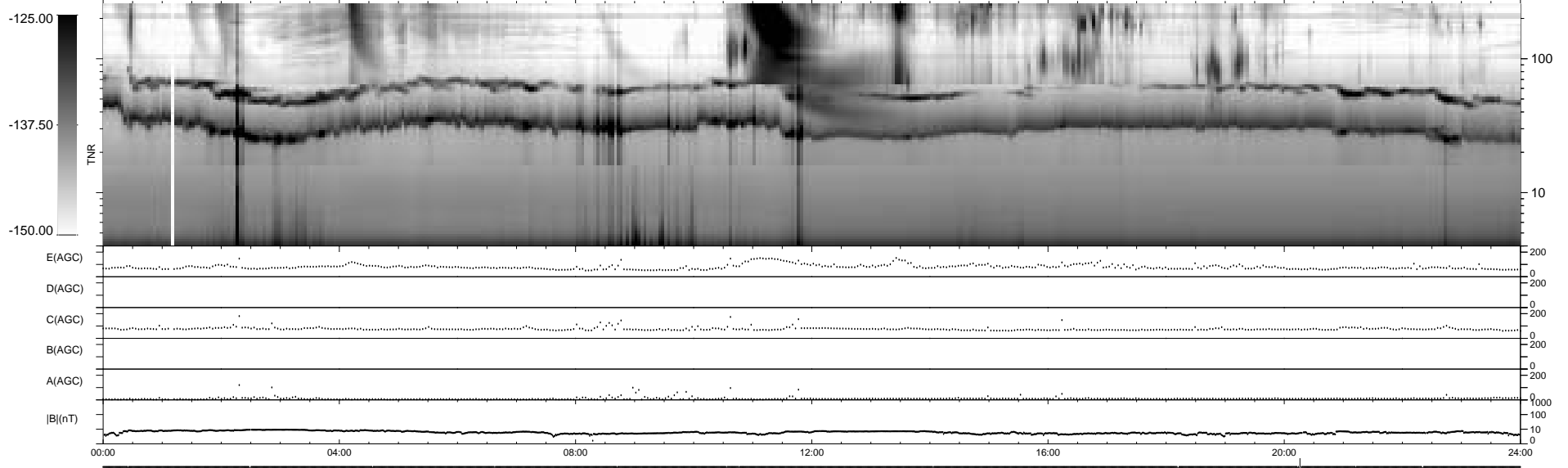
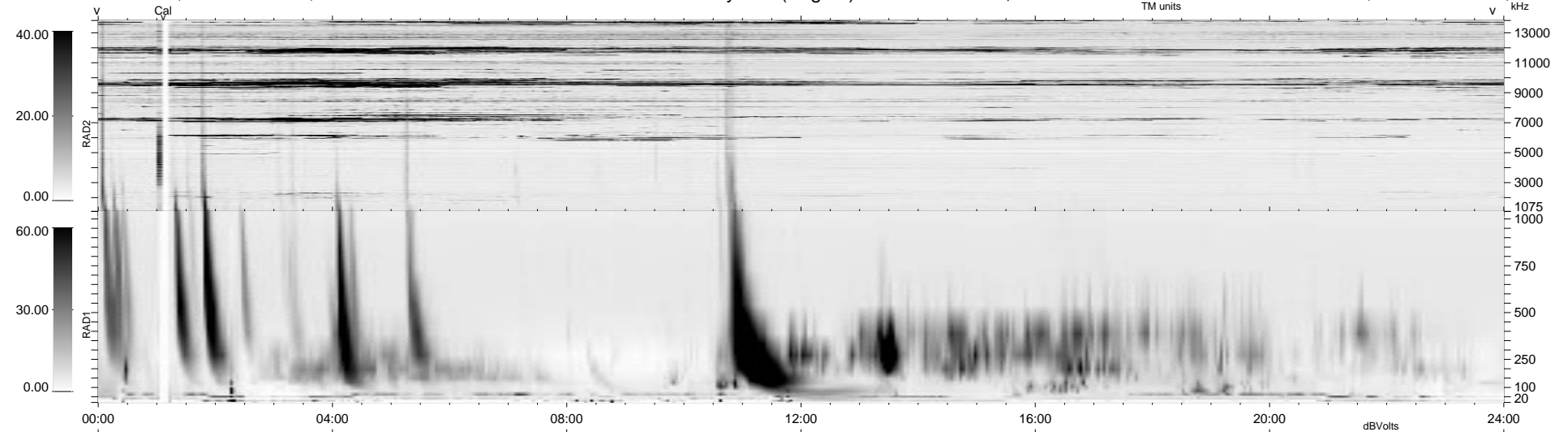


17 bad + 1861 good MF/1879MF projected (99%) - 1 missing MF  
 Avg interval = 180 secs  
 Re = 82.38 (64.66, -50.27, -8.83 GSE)

1.7d VMS-SunOS LZ version = v01  
 DAILY Thu Sep 25, 2008  
 Re = 90.58 (75.38, -49.20, -10.14 GSE)

WIND/WAVES Summary Plot (Page 1) for 23-SEP-1995, DOY = 266



RAD2  
 Antenna Ey  
 Mode LIN(1)  
 SUM/SEP SUM  
 Toggle OFF

RAD1  
 Antenna Ex  
 Mode LIS(0.2)  
 SUM/SEP SUM  
 Toggle OFF

TNR  
 Antenna ExEy  
 Mode A-32  
 Sweep ACE