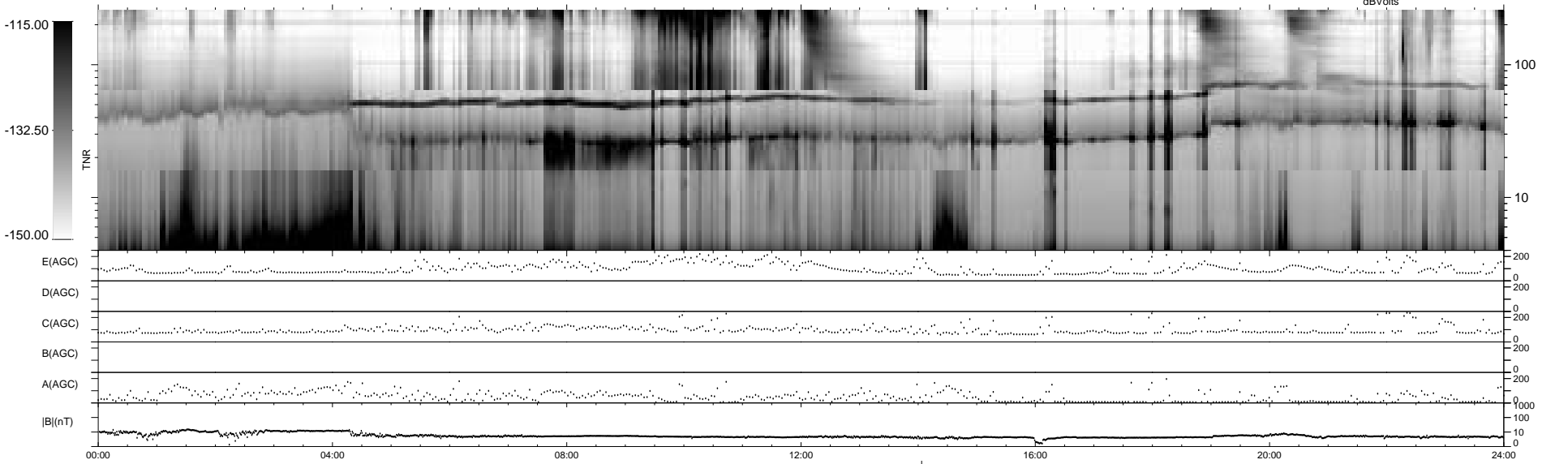
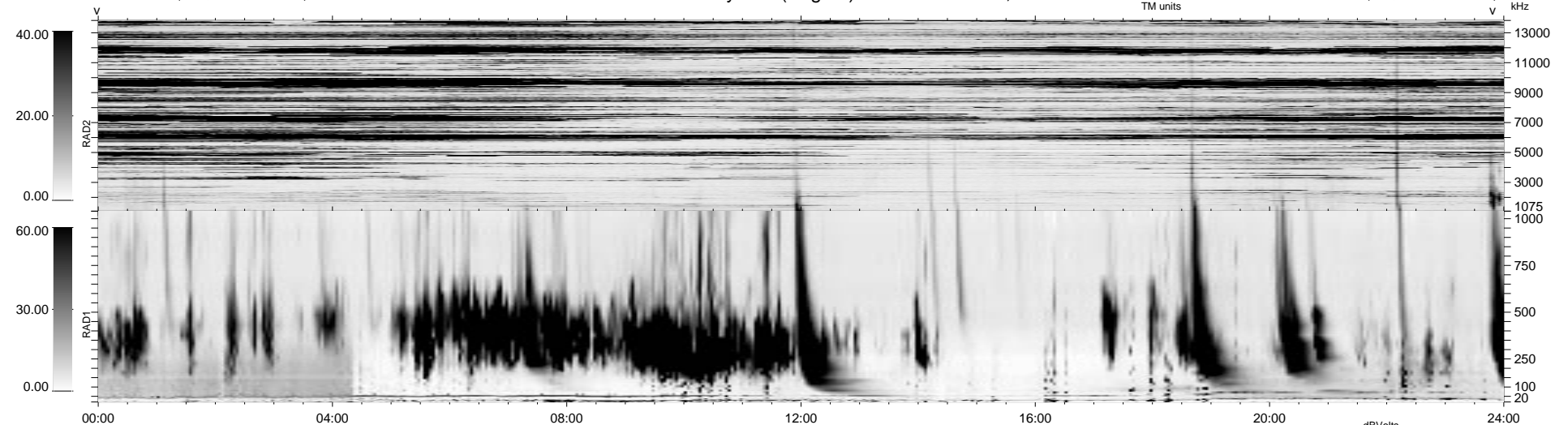


19 bad + 1858 good MF/1878MF projected (98%) - 1 missing MF
 Avg interval = 180 secs
 Re = 23.90 (-7.72, -22.60, 0.96 GSE)

1.7d VMS-SunOS LZ version = v01

WIND/WAVES Summary Plot (Page 1) for 18-SEP-1995, DOY = 261

DAILY Thu Sep 25, 2008
 Re = 38.51 (9.21, -37.36, -1.36 GSE)



```

RAD2
Antenna Ey .....
Mode LIN(1) .....
SUM/SEP SUM .....
Toggle OFF .....

RAD1
Antenna Ex .....
Mode LIS(2,4) .....
SUM/SEP SUM .....
Toggle OFF .....

TNR
Antenna ExEy .....
Mode A-32 .....
Sweep ACE .....
  
```