

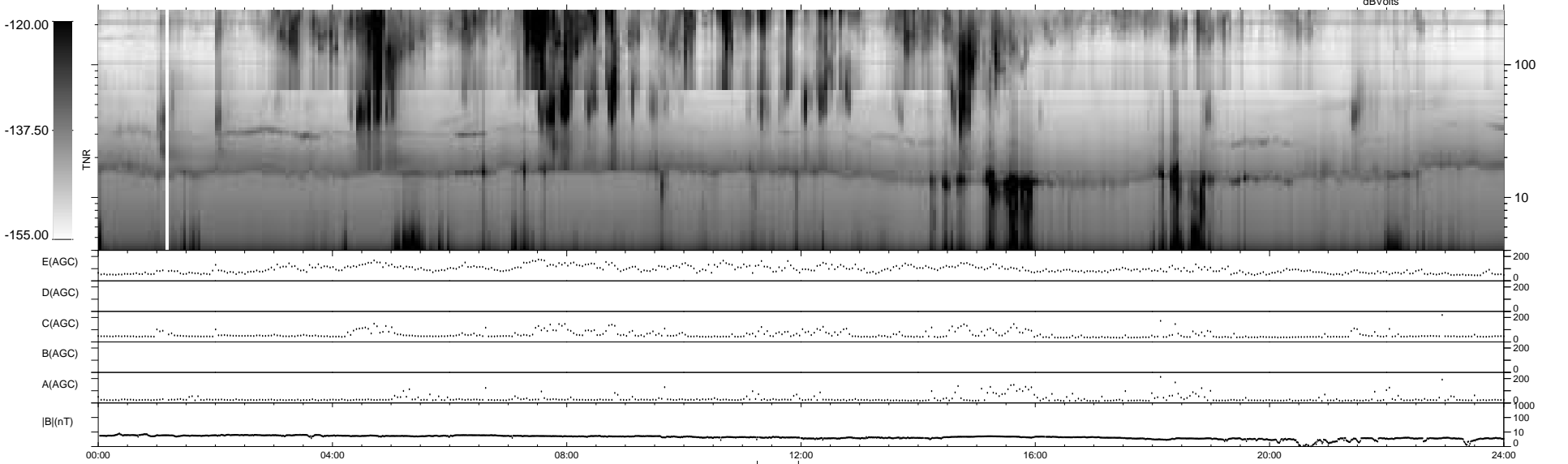
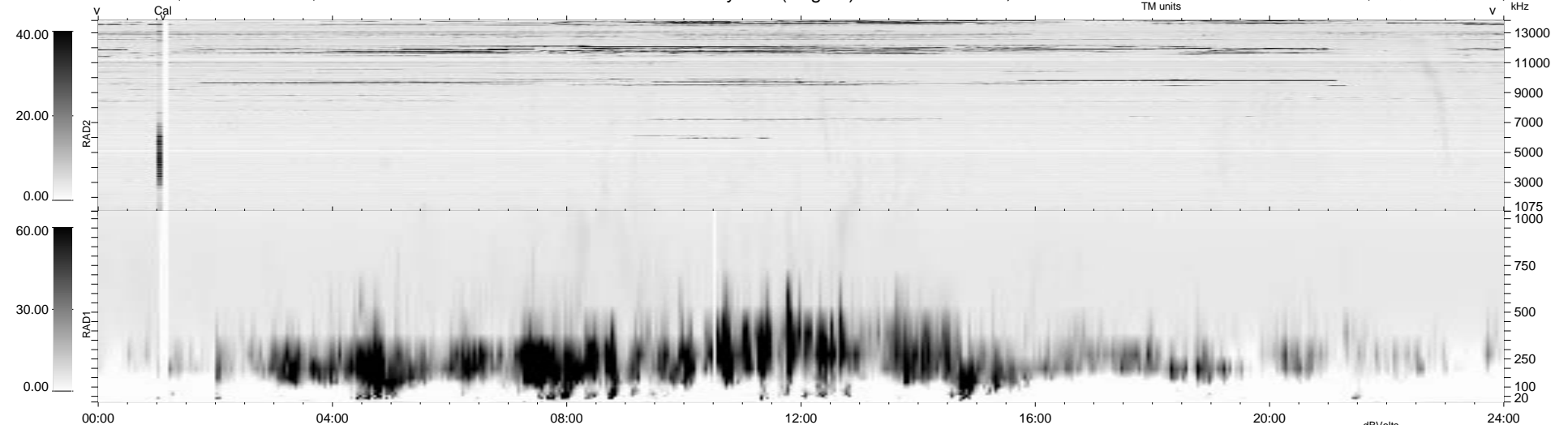
20 bad + 1856 good MF/1878MF projected (98%) - 2 missing MFs
 Avg interval = 180 secs
 Re = - 91.07 (87.59, 22.12, -11.52 GSE)

1.7d VMS-SunOS

LZ version = v01

WIND/WAVES Summary Plot (Page 1) for 09-SEP-1995, DOY = 252

DAILY Thu Sep 25, 2008
 Re = 86.14 (81.59, 25.41, -10.83 GSE)



RAD2
 Antenna Ey
 Mode LIN(1)
 SUM/SEP SUM
 Toggle OFF
 RAD1
 Antenna Ex
 Mode LIS(0.2)
 SUM/SEP SUM
 Toggle OFF
 TNR
 Antenna ExEy
 Mode A-32
 Sweep ACE