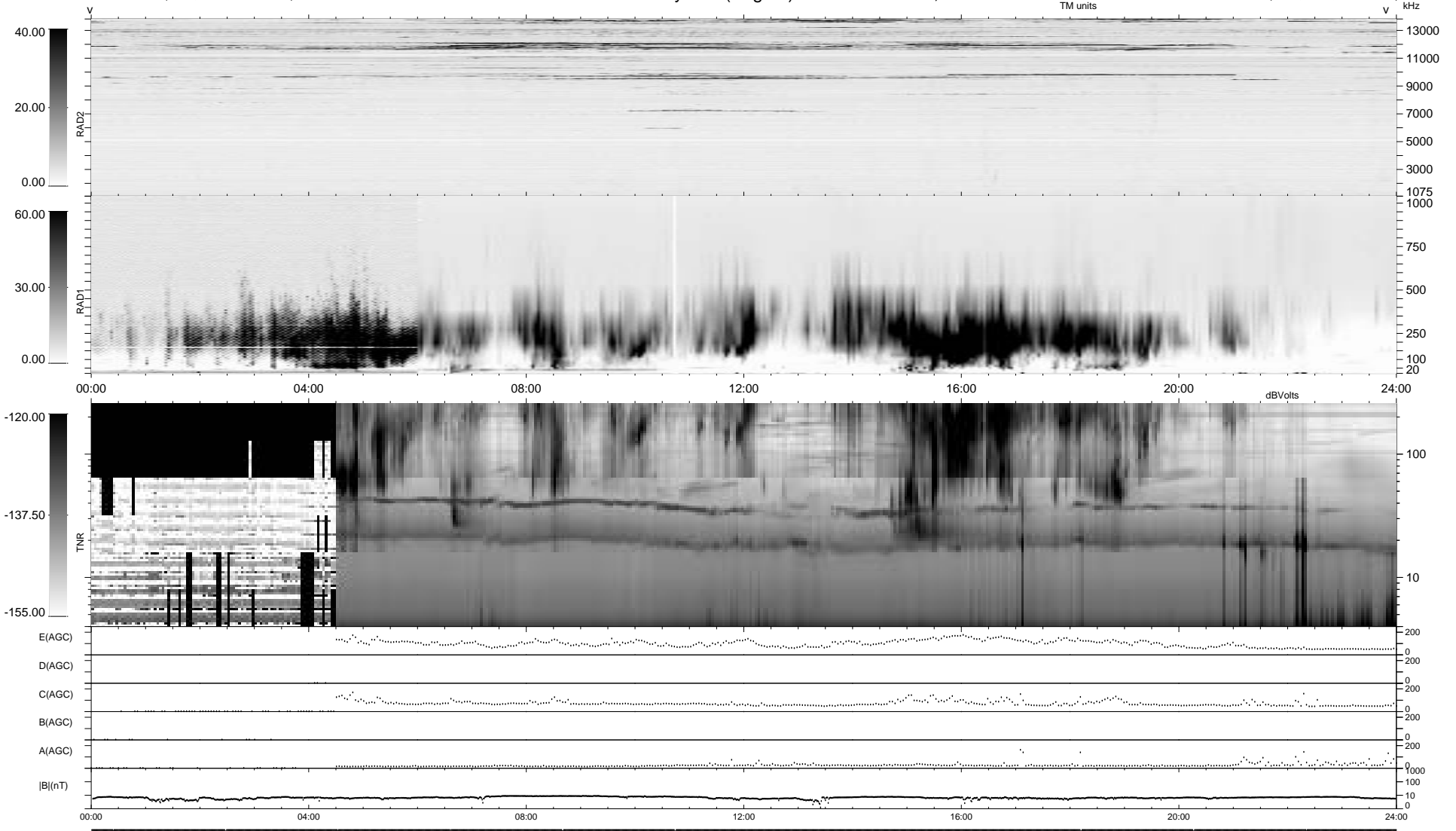


14 bad + 1864 good MF/1878MF projected (99%) - 0 missing MFs
 Avg interval = 180 secs
 Re = - 95.16 (92.53, 18.66, -12.05 GSE)

1.7d VMS-SunOS LZ version = v01
 DAILY Thu Sep 25, 2008
 Re = 91.10 (87.63, 22.10, -11.53 GSE)

WIND/WAVES Summary Plot (Page 1) for 08-SEP-1995, DOY = 251



```

RAD2
Antenna Ey
Mode LIN(1)
SUM/SEP SUM
Toggle OFF

RAD1
Antenna Ex
Mode LIN(1) LIS(0,2)
SUM/SEP SUM
Toggle OFF

TNR
Antenna ExEy
Mode A-32
Sweep NN ACE
  
```