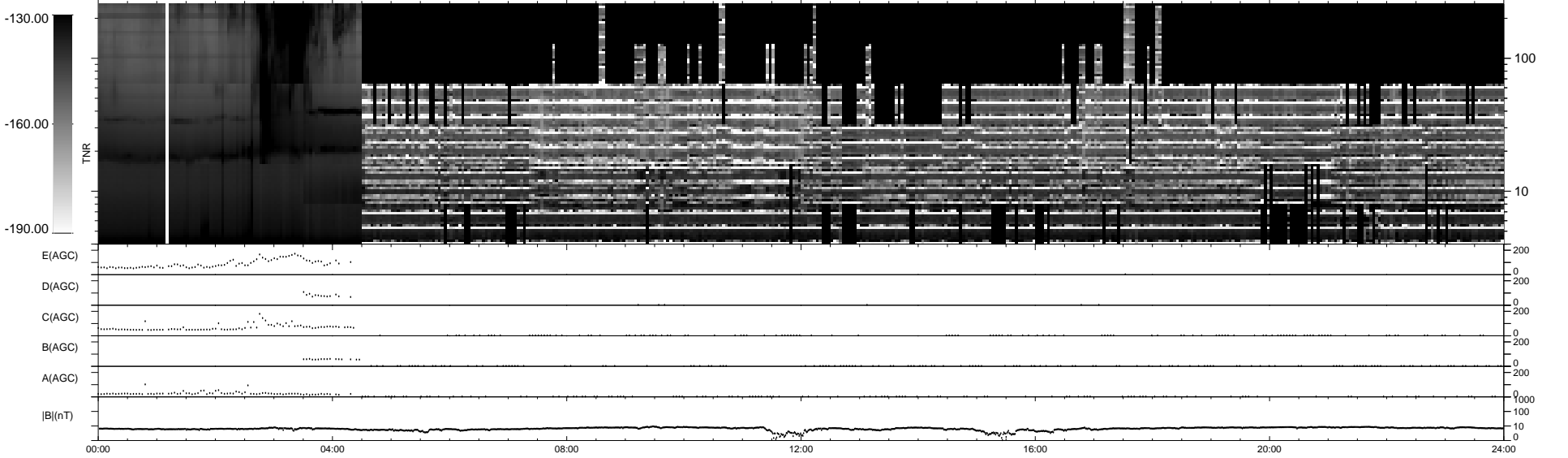
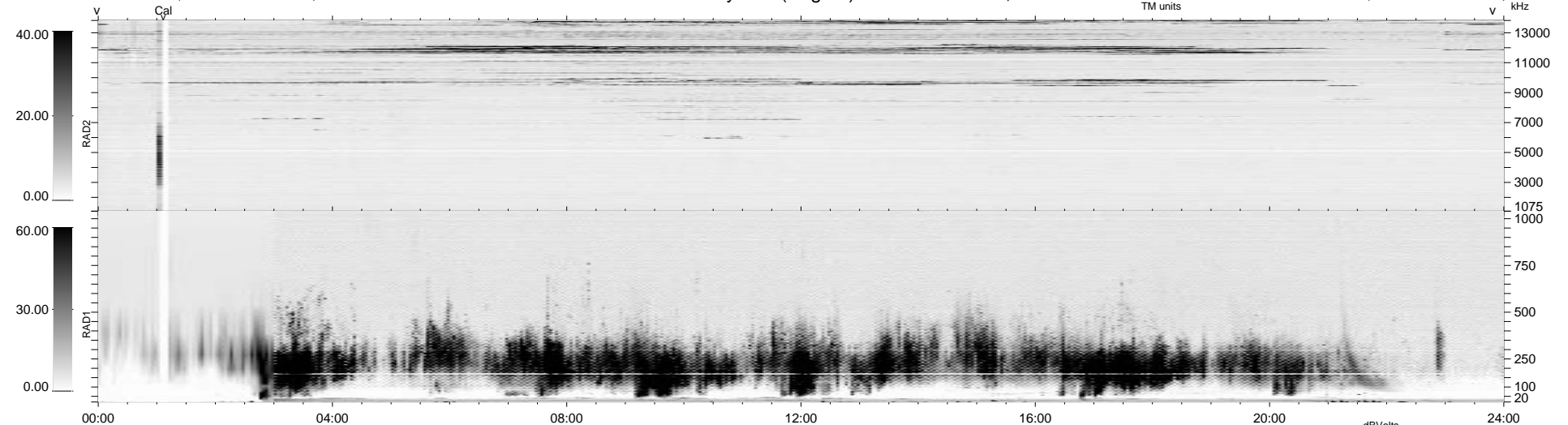


14 bad + 1865 good MF/1879MF projected (99%) - 0 missing MFs  
 Avg interval = 180 secs  
 Re = 98.42 (96.47, 15.08, -12.41 GSE)

1.7d VMS-SunOS LZ version = v01  
 DAILY Thu Sep 25, 2008  
 Re = 95.18 (92.56, 18.63, -12.05 GSE)

### WIND/WAVES Summary Plot (Page 1) for 07-SEP-1995, DOY = 250



```

RAD2
Antenna Ey .....
Mode LIN(1) .....
SUM/SEP SUM .....
Toggle OFF .....

RAD1
Antenna Ex .....
Mode LIS(0.2) ..... LIN(1) .....
SUM/SEP SUM ..... SEP .....
Toggle OFF .....

TNR
Antenna ExEy .....
Mode A-32 .....
Sweep ACE ..... ABCDEBN .....
  
```