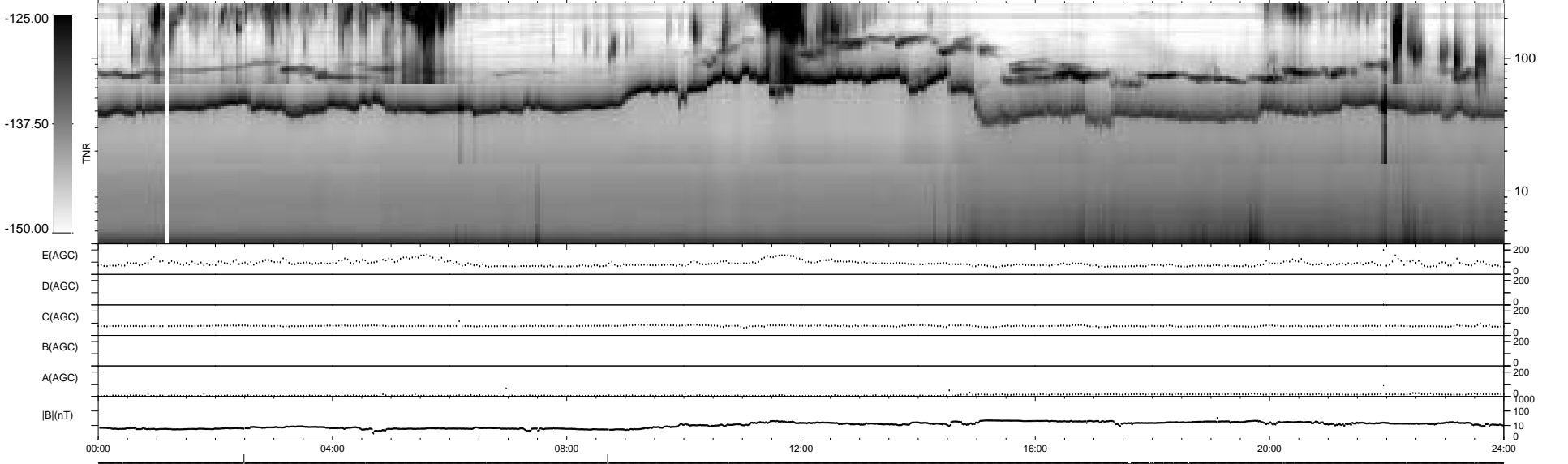
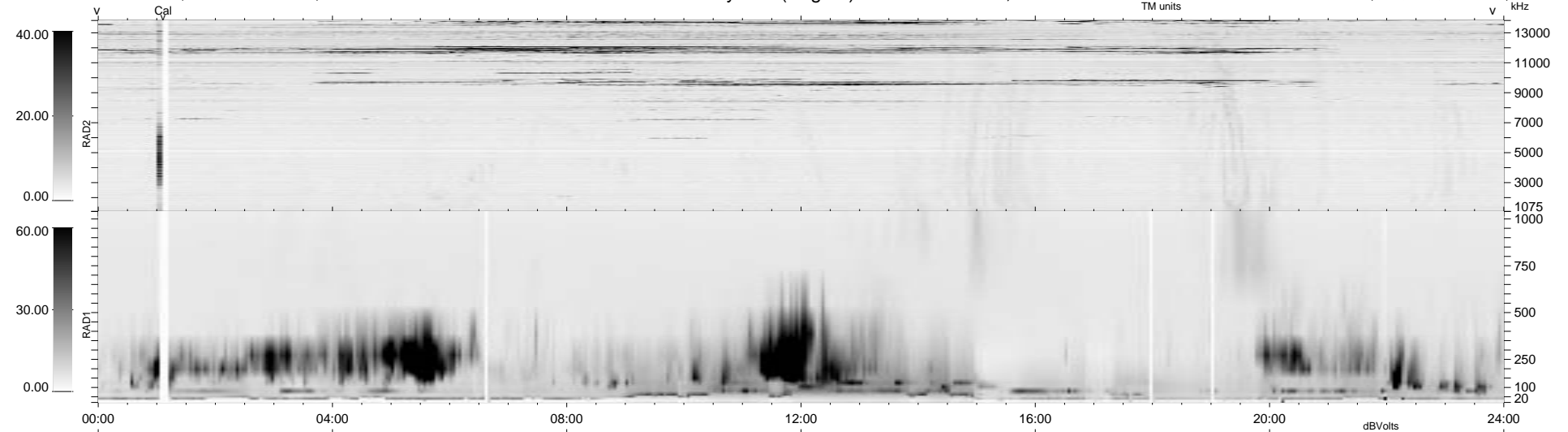


30 bad + 1846 good MF/1878MF projected (98%) - 2 missing MFs
 Avg interval = 180 secs
 Re = - 102.70 (101.62, 7.68, -12.69 GSE)

1.7d VMS-SunOS LZ version = v01
 DAILY Thu Sep 25, 2008
 Re = 100.94 (99.50, 11.39, -12.62 GSE)

WIND/WAVES Summary Plot (Page 1) for 05-SEP-1995, DOY = 248



RAD2
 Antenna Ey
 Mode LIN(1)
 SUM/SEP SUM
 Toggle OFF

RAD1
 Antenna Ex
 Mode LIS(0.2)
 SUM/SEP SUM
 Toggle OFF

TNR
 Antenna ExEy
 Mode A-32
 Sweep ACE