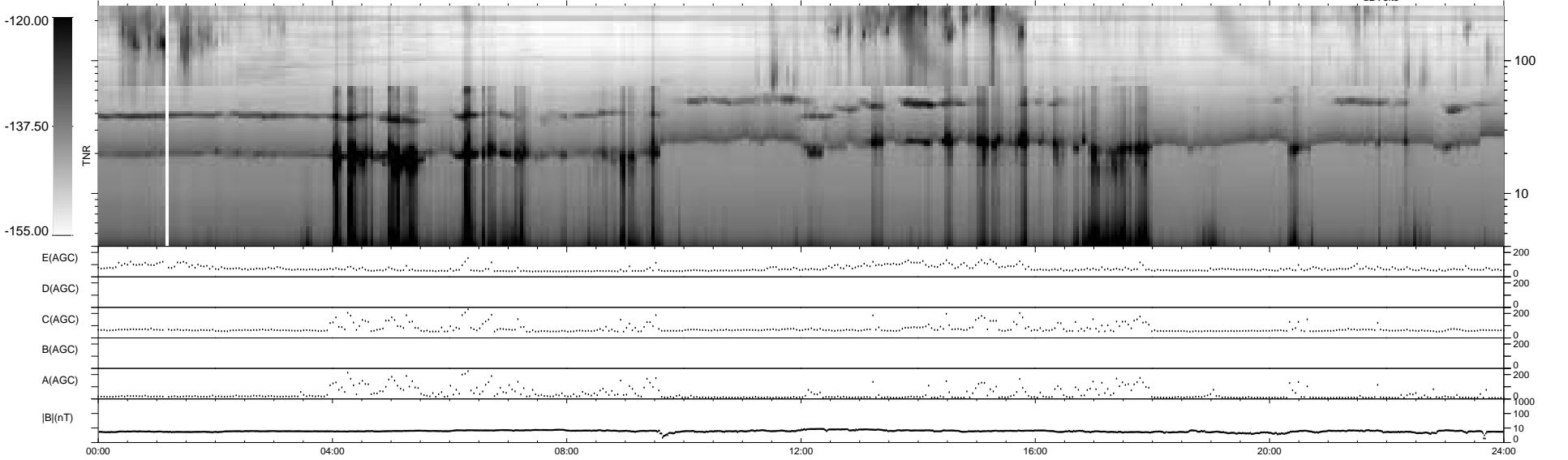
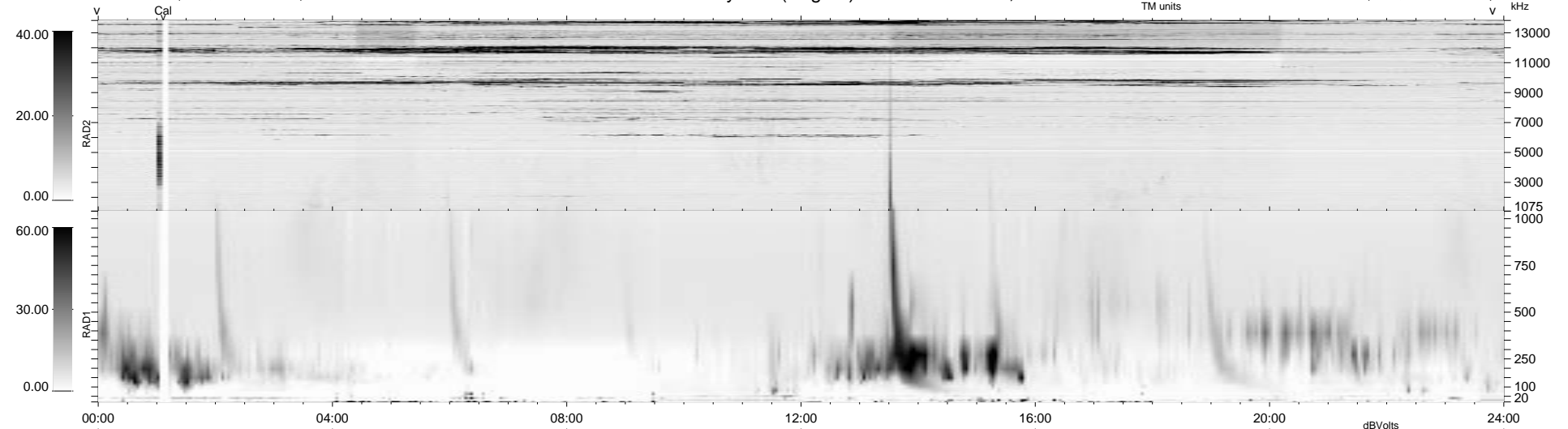


17 bad + 1862 good MF/1879MF projected (99%) - 0 missing MFs
 Avg interval = 180 secs
 Re = 80.93 (80.82, 0.94, -4.17 GSE)

1.7d VMS-SunOS LZ version = v01

WIND/WAVES Summary Plot (Page 1) for 12-AUG-1995, DOY = 224

DAILY Thu Sep 25, 2008
 Re = 79.50 (79.26, 4.52, -4.19 GSE)



RAD2
 Antenna Ey
 Mode LIN(1)
 SUM/SEP SUM
 Toggle OFF
 RAD1
 Antenna Ex
 Mode LIS(0.2)
 SUM/SEP SUM
 Toggle OFF
 TNR
 Antenna ExEy
 Mode A-32
 Sweep ACE