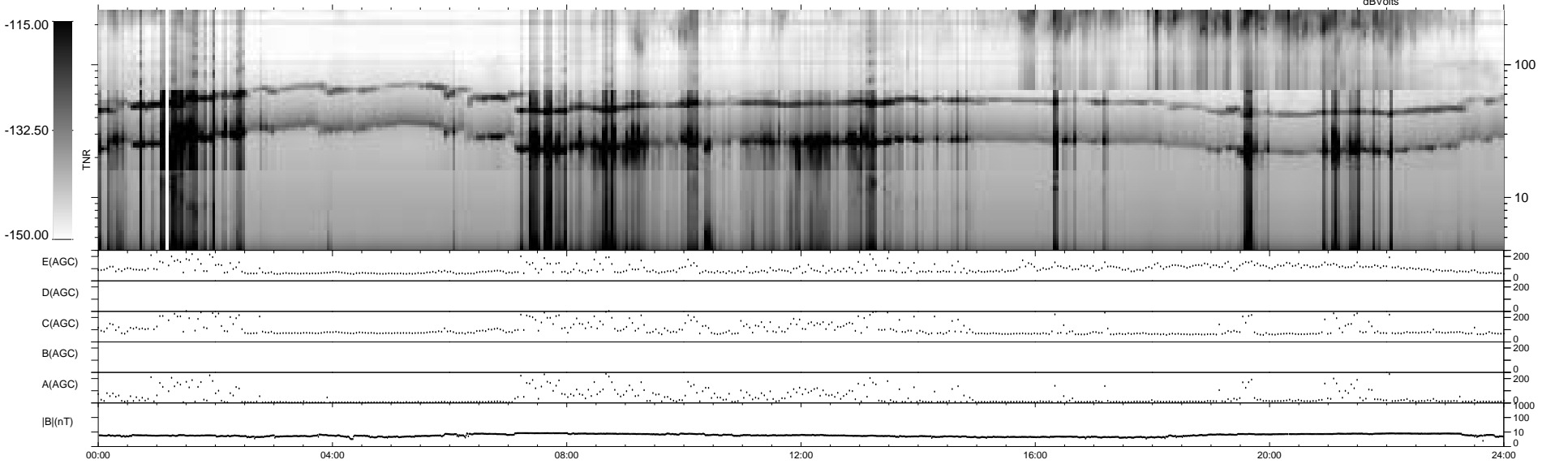
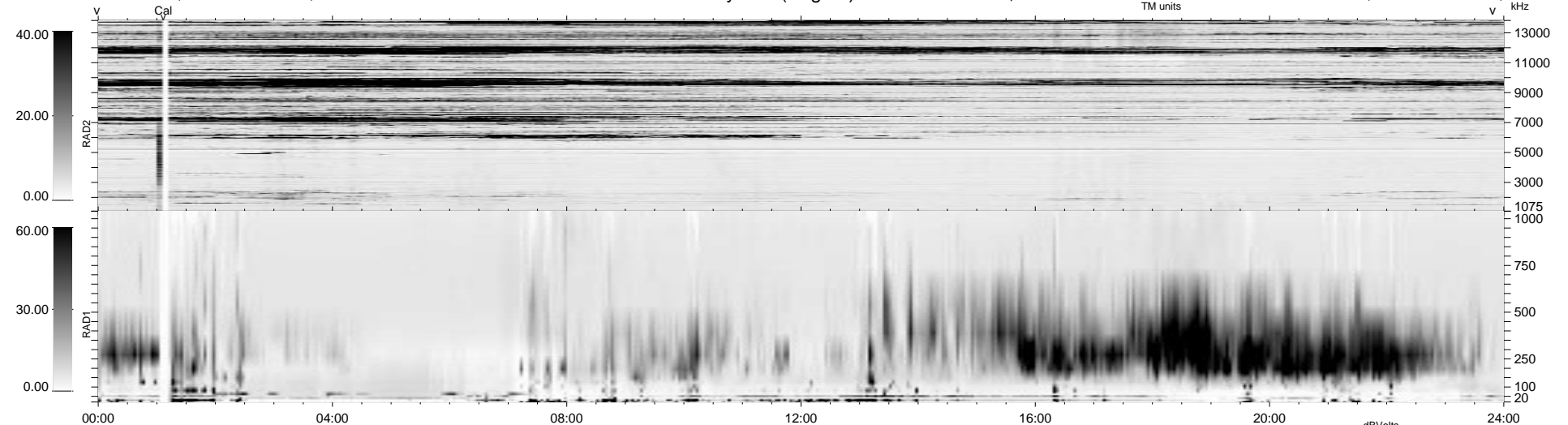


16 bad + 1863 good MF/1879MF projected (99%) - 0 missing MFs
 Avg interval = 180 secs
 Re = 34.82 (27.27, -21.65, -0.65 GSE)

1.7d VMS-SunOS LZ version = v01
 DAILY Thu Sep 25, 2008
 Re = 48.59 (43.63, -21.34, -1.48 GSE)

WIND/WAVES Summary Plot (Page 1) for 04-AUG-1995, DOY = 216



E(AGC) 200
 D(AGC) 200
 C(AGC) 200
 B(AGC) 200
 A(AGC) 200
 |B|(nT) 1000
 10
 0

00:00 04:00 08:00 12:00 16:00 20:00 24:00

RAD2
 Antenna Ey
 Mode LIN(1)
 SUM/SEP SUM
 Toggle OFF
 RAD1
 Antenna Ex
 Mode LIS(0.2)
 SUM/SEP SUM
 Toggle OFF
 TNR
 Antenna ExEy
 Mode A-32
 Sweep ACE