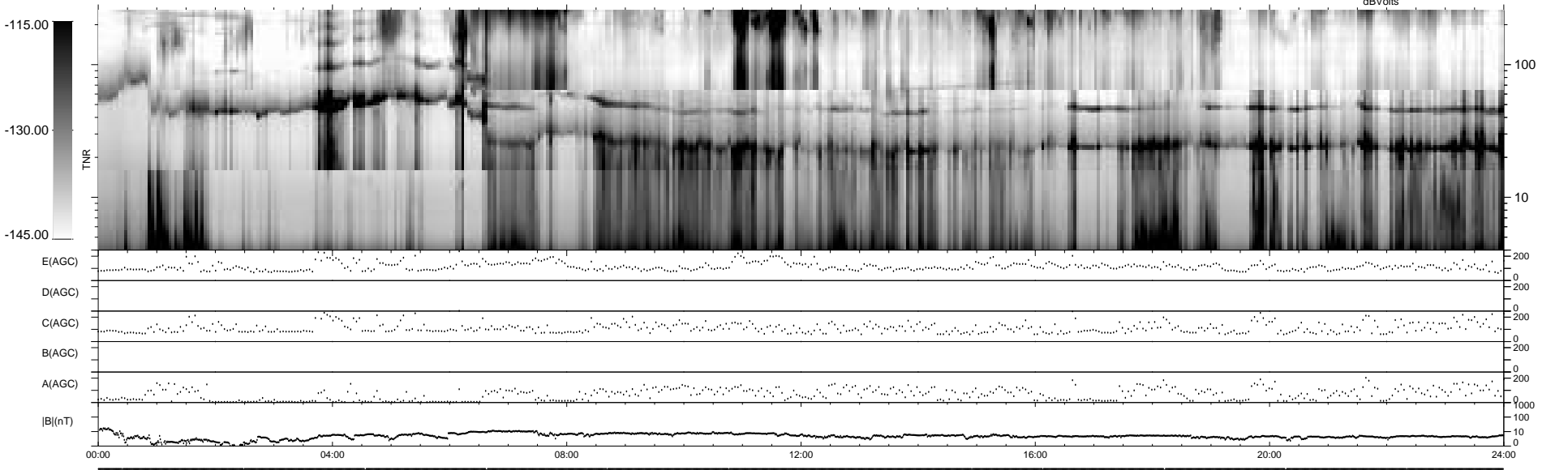
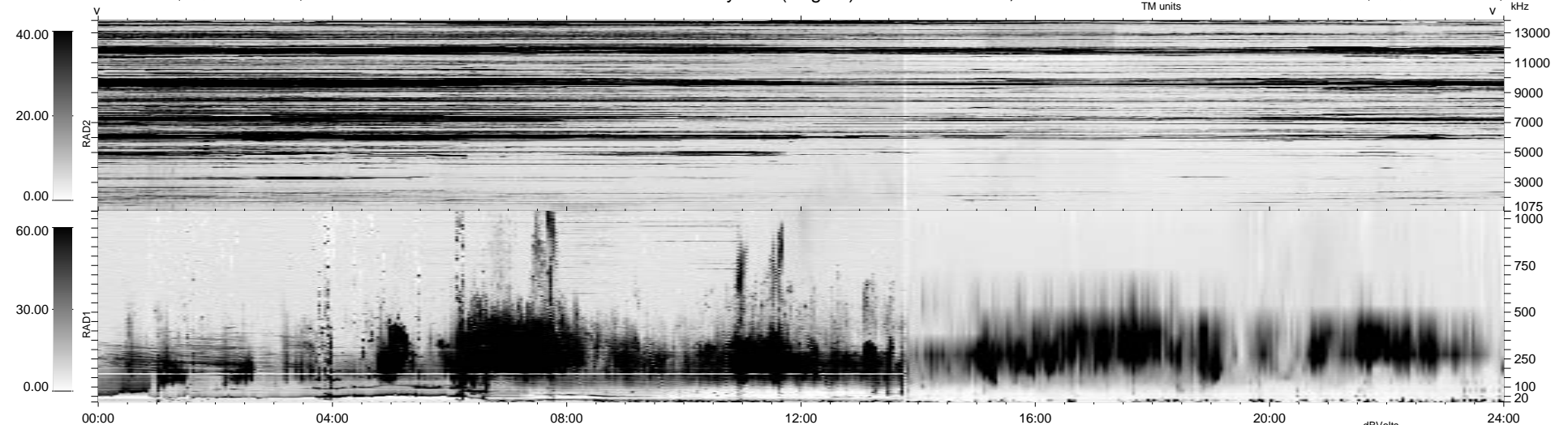


15 bad + 1863 good MF/1878MF projected (99%) - 0 missing MFs
 Avg interval = 180 secs
 Re = 15.21 (2.90, -14.93, 0.33 GSE)

1.7d VMS-SunOS LZ version = v01

WIND/WAVES Summary Plot (Page 1) for 03-AUG-1995, DOY = 215

DAILY Thu Sep 25, 2008
 Re = 34.71 (27.13, -21.64, -0.64 GSE)



```

RAD2
Antenna Ey .....
Mode LIN(1) .....
SUM/SEP SEP ..... SUM .....
Toggle OFF .....

RAD1
Antenna Ex .....
Mode LIN(1) ..... LIS(0,2) .....
SUM/SEP SEP ..... SUM .....
Toggle OFF .....

TNR
Antenna ExEy .....
Mode A-32 .....
Sweep ACE .....
  
```