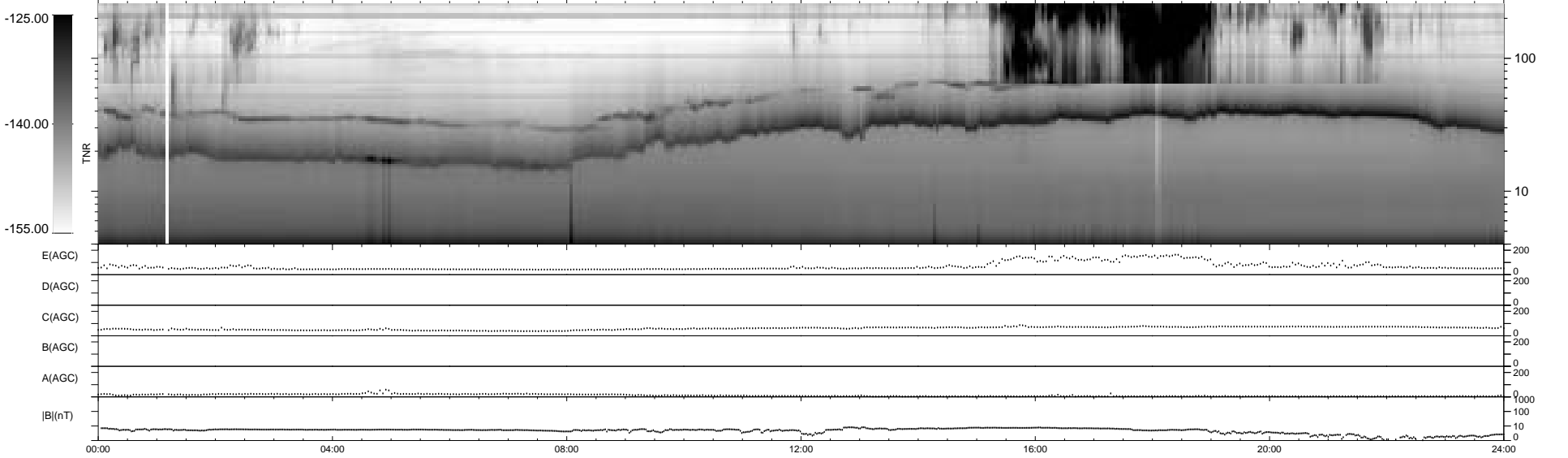
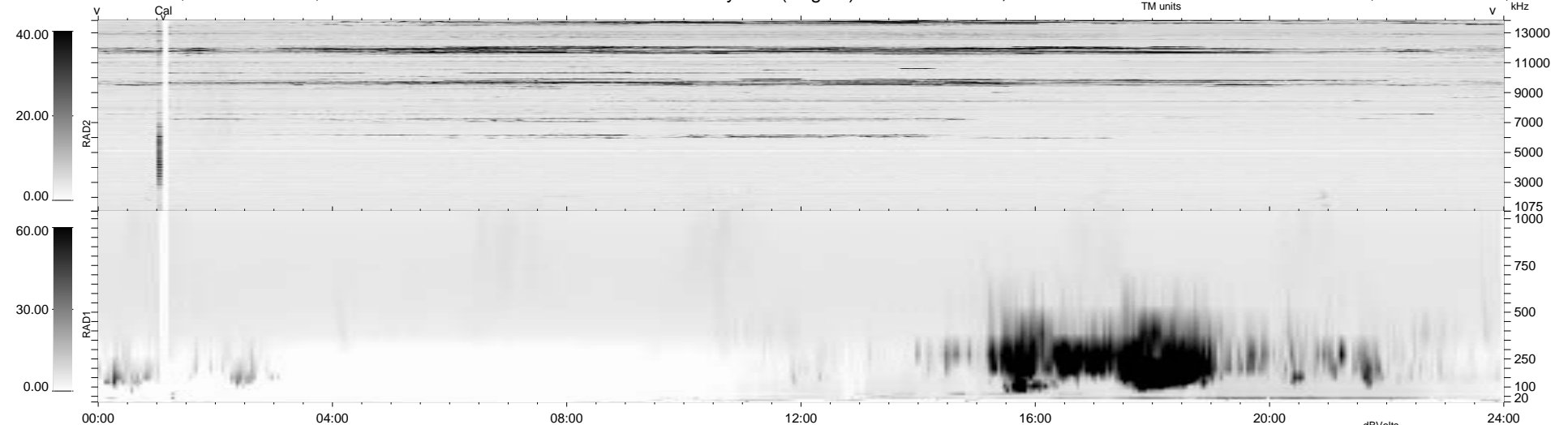


10 bad + 929 good MF/939MF projected (98%) - 0 missing MFs
 Avg interval = 180 secs
 Re = 123.11 (122.40, 5.06, -12.23 GSE)

1.7d VMS-SunOS LZ version = v01
 DAILY Thu Sep 25, 2008
 Re = 116.45 (115.54, 8.97, -11.37 GSE)

WIND/WAVES Summary Plot (Page 1) for 23-JUL-1995, DOY = 204



```

RAD2
Antenna Ey .....
Mode LIN(1) .....
SUM/SEP SUM .....
Toggle OFF .....

RAD1
Antenna Ex .....
Mode LIS(0.2) .....
SUM/SEP SUM .....
Toggle OFF .....

TNR
Antenna ExEy .....
Mode A-32 .....
Sweep ACE .....
  
```