

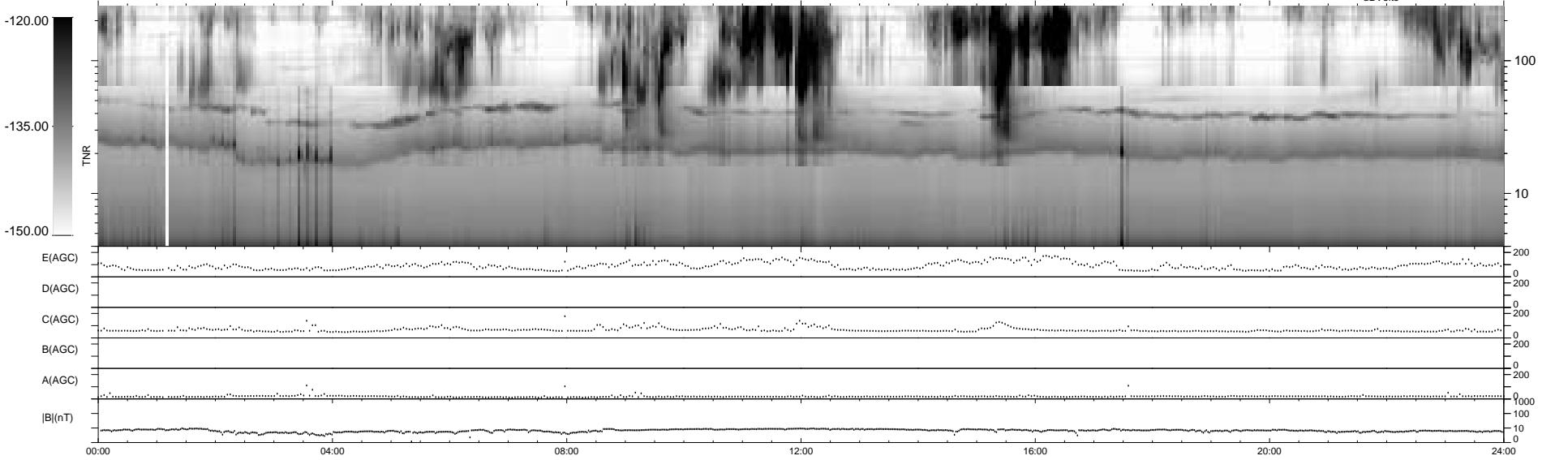
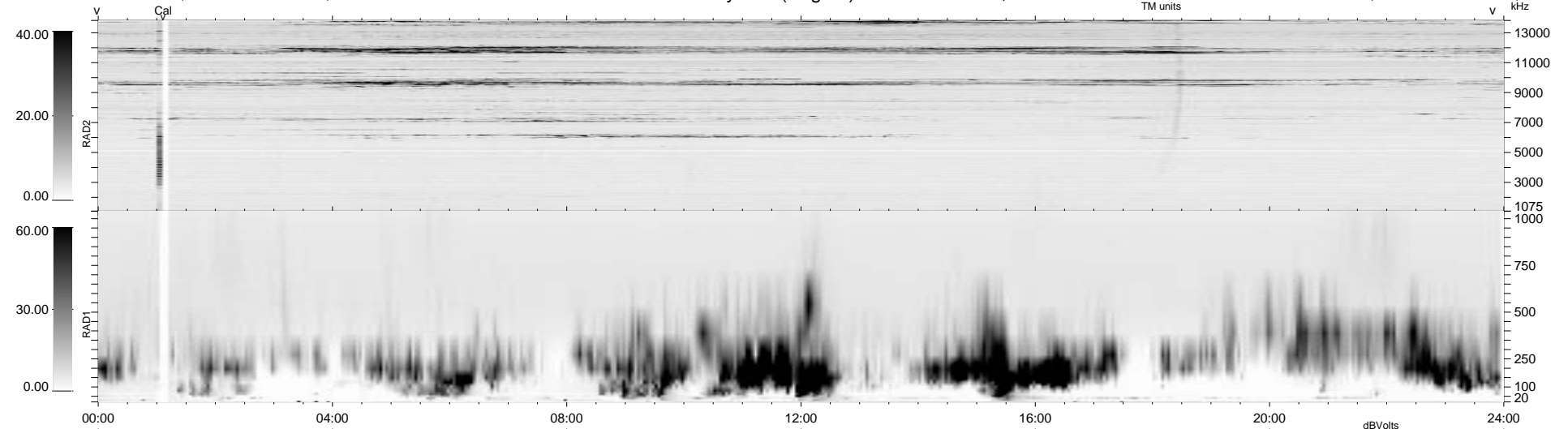
5 bad + 934 good MF/939MF projected (99%) - 0 missing MFs
 Avg interval = 180 secs
 Re = - 155.93 (154.48, -13.95, -15.95 GSE)

1.7d VMS-SunOS

LZ version = v01

WIND/WAVES Summary Plot (Page 1) for 17-JUL-1995, DOY = 198

DAILY Thu Sep 25, 2008
 Re = 151.23 (150.00, -11.38, -15.49 GSE)



```

RAD2
Antenna Ey .....
Mode LIN(1) .....
SUM/SEP SUM .....
Toggle OFF .....

RAD1
Antenna Ex .....
Mode LIS(0.2) .....
SUM/SEP SUM .....
Toggle OFF .....

TNR
Antenna ExEy .....
Mode A-32 .....
Sweep ACE .....
  
```