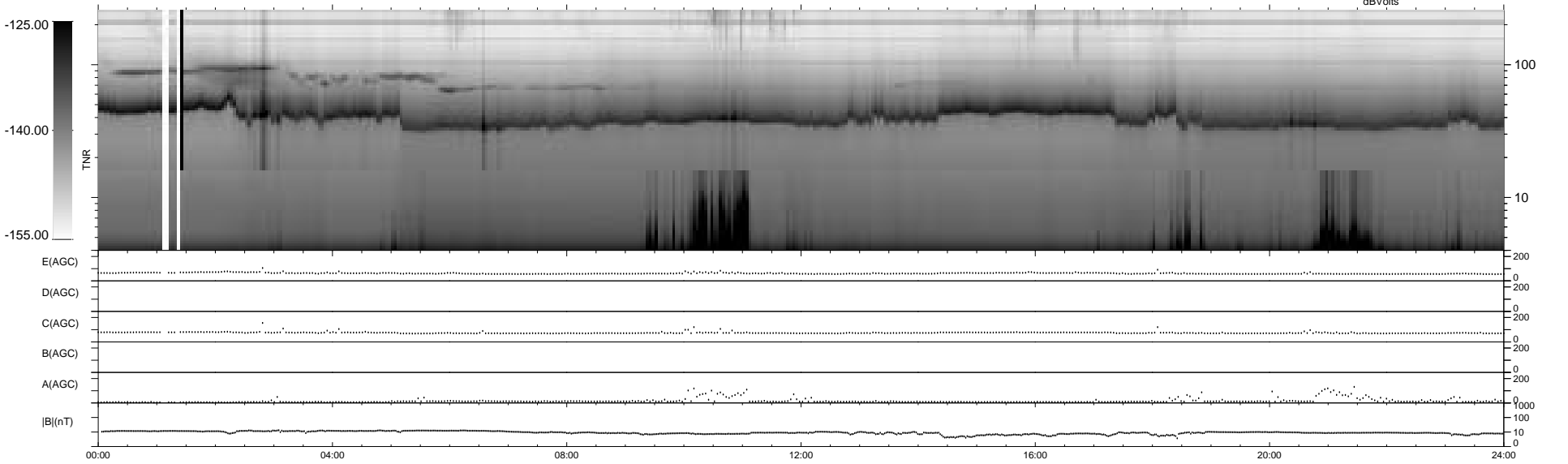
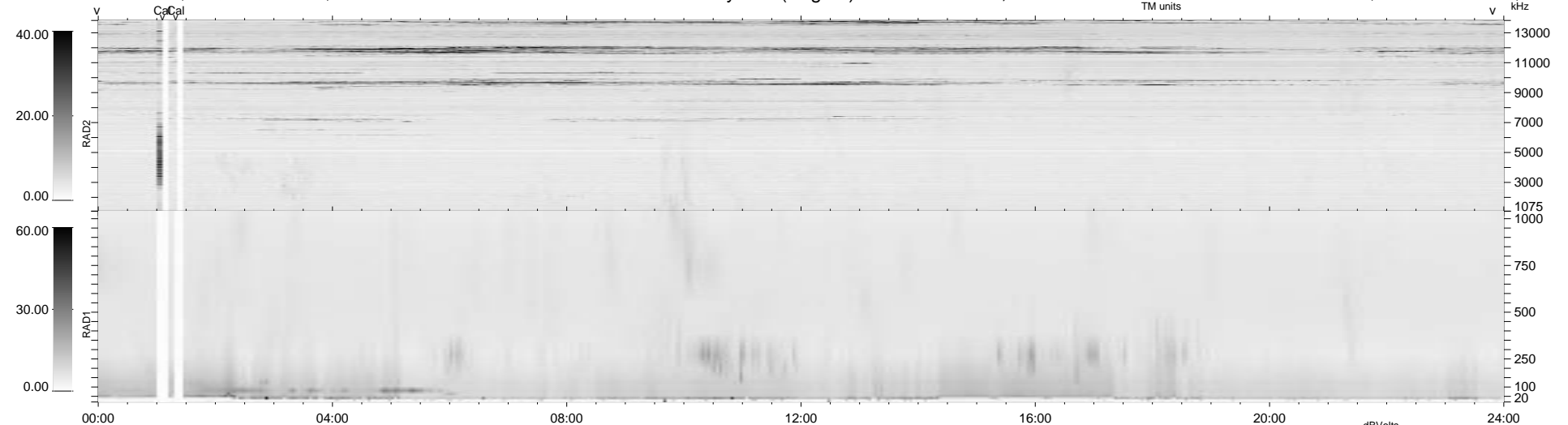


6 bad + 933 good MF/939MF projected (99%) - 0 missing MFs  
 Avg interval = 180 secs  
 Re = 172.74 (170.43, -22.22, -17.34 GSE)

1.7d VMS-SunOS LZ version = v01  
 DAILY Thu Sep 25, 2008  
 Re = 168.84 (166.73, -20.47, -17.06 GSE)

### WIND/WAVES Summary Plot (Page 1) for 13-JUL-1995, DOY = 194



```

RAD2
Antenna Ey
Mode LIN(1)
SUM/SEP SUM
Toggle OFF

RAD1
Antenna Ex
Mode LIS(0.2)
SUM/SEP SUM
Toggle OFF

TNR
Antenna ExEy
Mode A-32
Sweep ACE
  
```