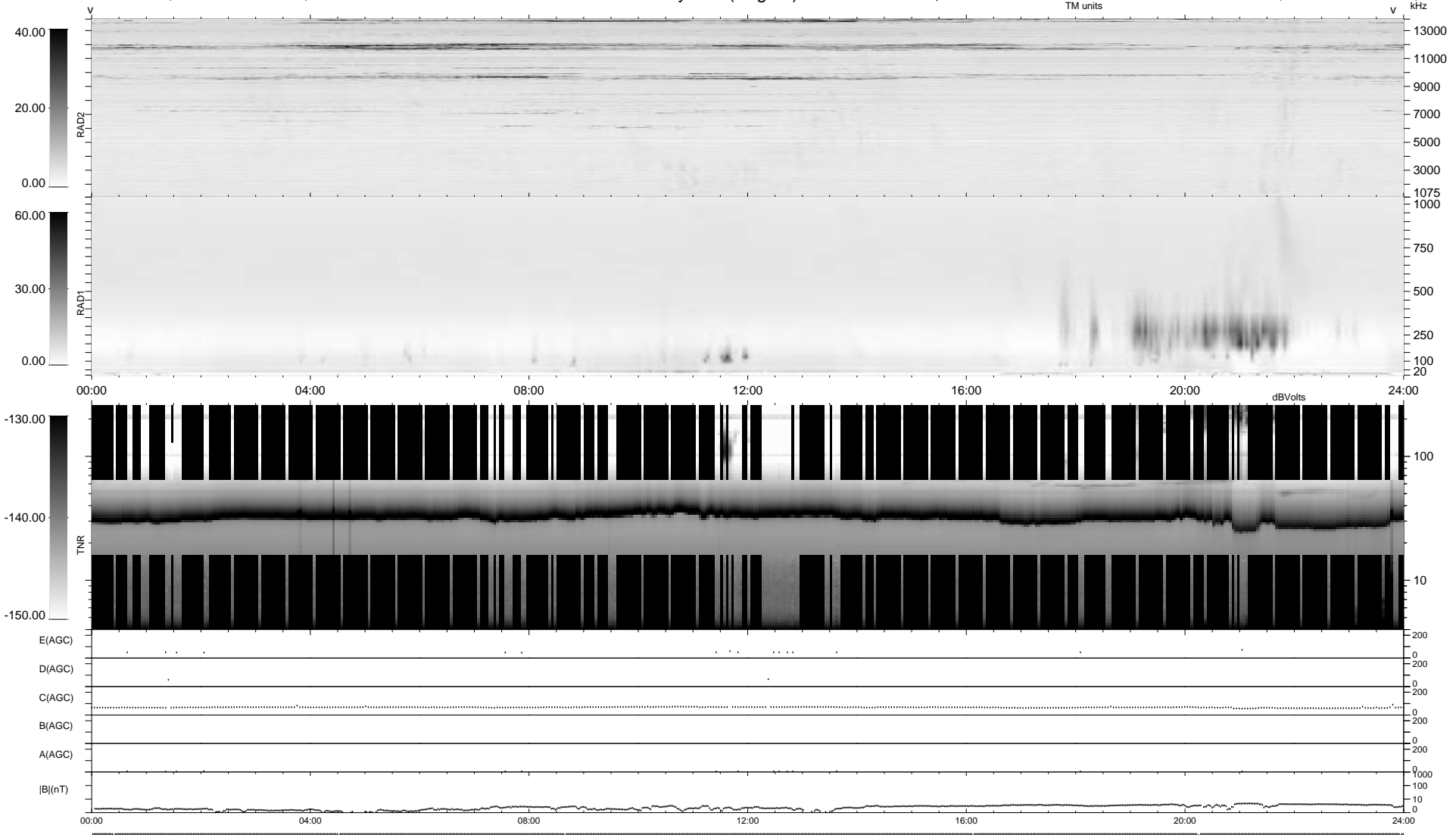


7 bad + 932 good MF/939MF projected (99%) - 0 missing MFs
 Avg interval = 180 secs
 Re = 196.39 (193.16, -30.41, -18.25 GSE)

1.7d VMS-SunOS LZ version = v01
 DAILY Thu Sep 25, 2008
 Re = 193.40 (190.25, -29.61, -18.23 GSE)

WIND/WAVES Summary Plot (Page 1) for 06-JUL-1995, DOY = 187



RAD2 Antenna Ey
 Mode LIN(1)
 SUM/SEP SUM
 Toggle OFF

RAD1 Antenna Ex
 Mode LIS(0.2)
 SUM/SEP SUM
 Toggle OFF

TNR Antenna ExEy
 Mode A-32
 Sweep NN