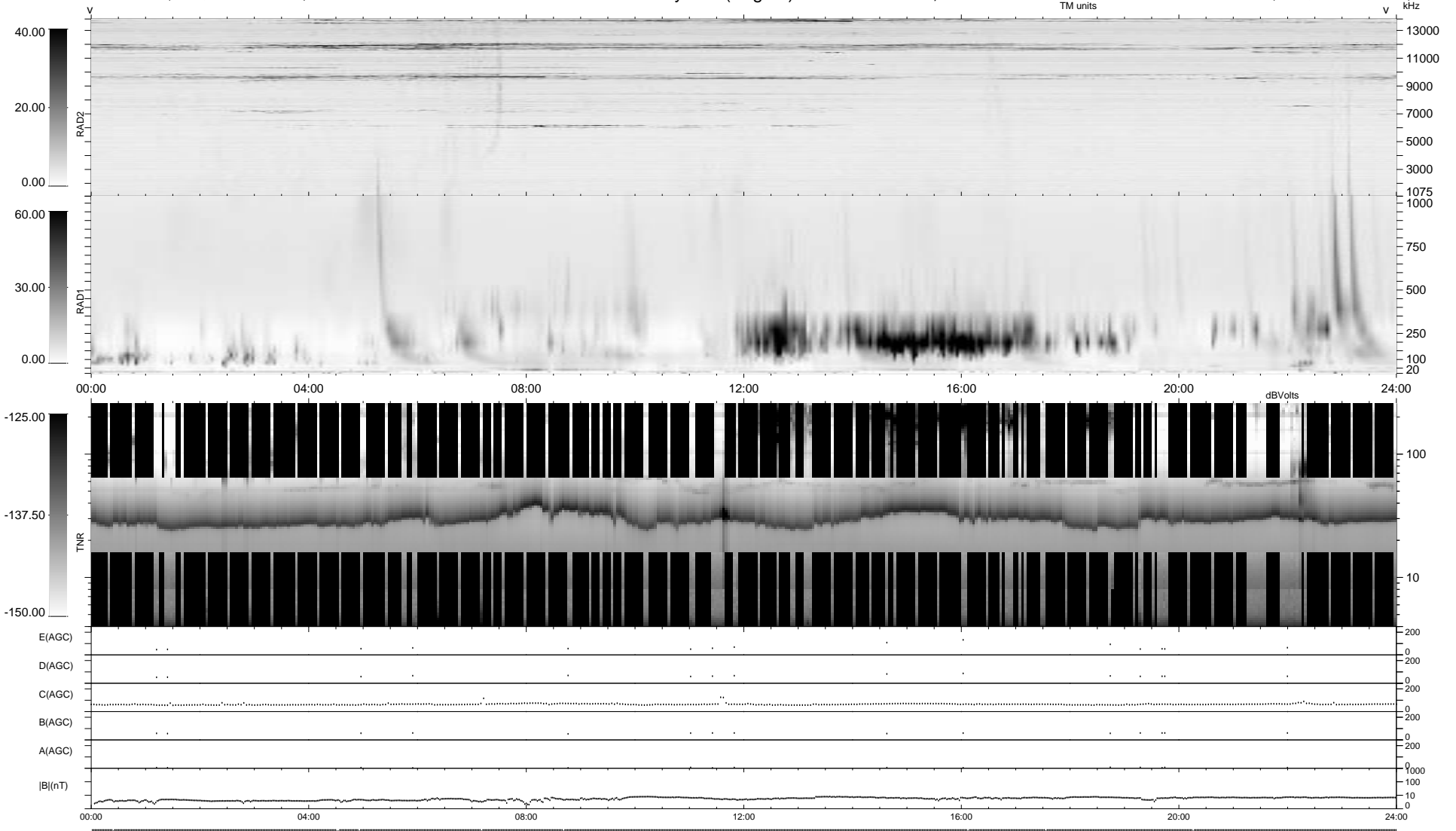


9 bad + 930 good MF/939MF projected (99%) - 0 missing MFs
 Avg interval = 180 secs
 Re = - 216.01 (212.71, -33.16, -17.87 GSE)

1.7d VMS-SunOS LZ version = v01
 DAILY Thu Sep 25, 2008
 Re = 213.99 (210.66, -33.18, -17.72 GSE)

WIND/WAVES Summary Plot (Page 1) for 28-JUN-1995, DOY = 179



```

RAD2
Antenna Ey .....
Mode LIN(1) .....
SUM/SEP SUM .....
Toggle OFF .....

RAD1
Antenna Ex .....
Mode LIS(0.2) .....
SUM/SEP SUM .....
Toggle OFF .....

TNR
Antenna ExEy .....
Mode A-32 .....
Sweep NN .....
  
```