

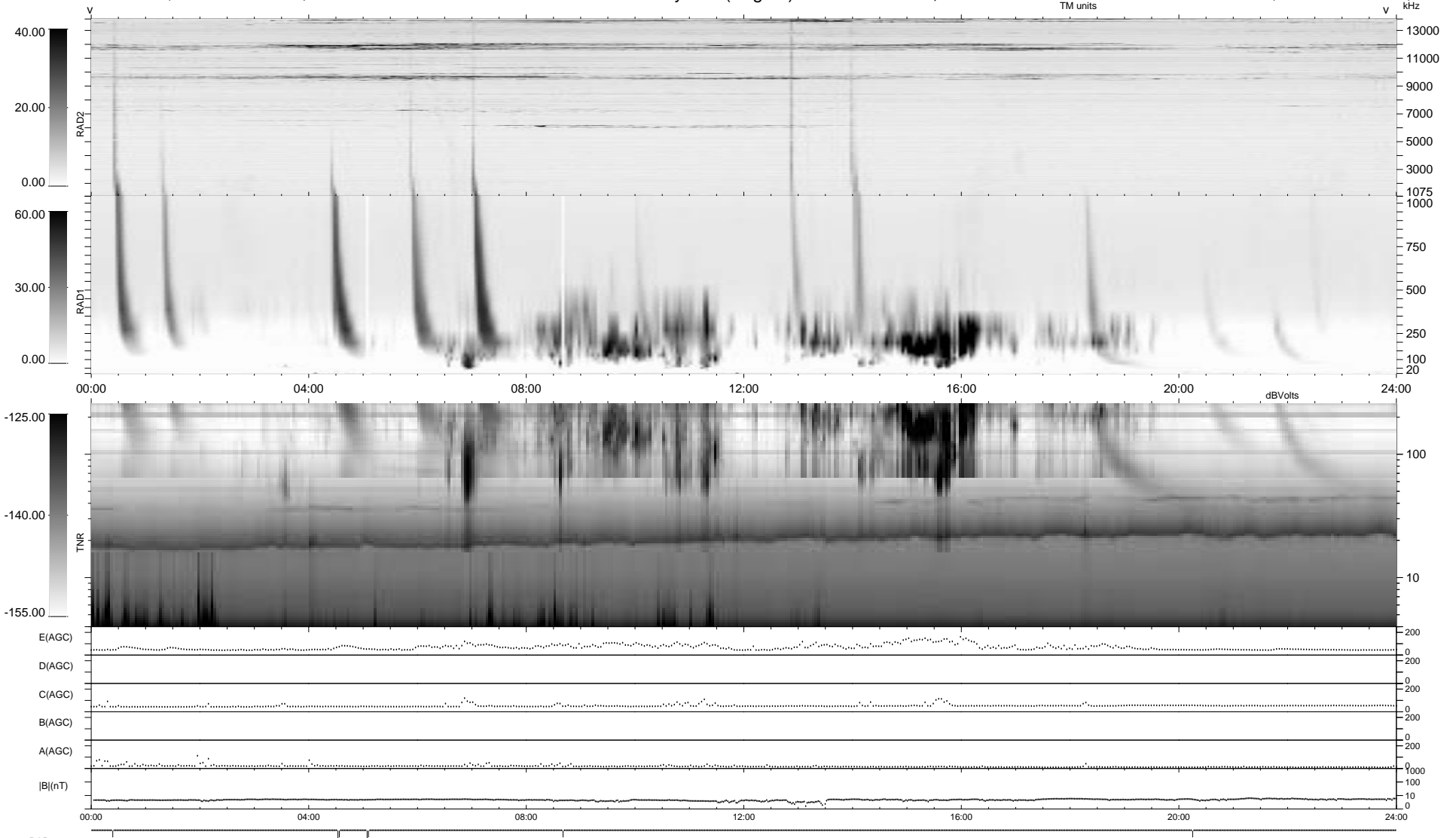
7 bad + 932 good MF/939MF projected (99%) - 0 missing MFs  
 Avg interval = 180 secs  
 Re = -224.46 (221.51, -31.43, -18.18 GSE)

1.7d VMS-SunOS

LZ version = v01

WIND/WAVES Summary Plot (Page 1) for 23-JUN-1995, DOY = 174

DAILY Thu Sep 25, 2008  
 Re = 223.00 (219.94, -32.00, -18.17 GSE)



RAD2 Antenna Ey  
 Mode LIN(1)  
 SUM/SEP SUM  
 Toggle OFF

RAD1 Antenna Ex  
 Mode LIS(0.2)  
 SUM/SEP SUM  
 Toggle OFF

TNR Antenna ExEy  
 Mode A-32  
 Sweep ACE