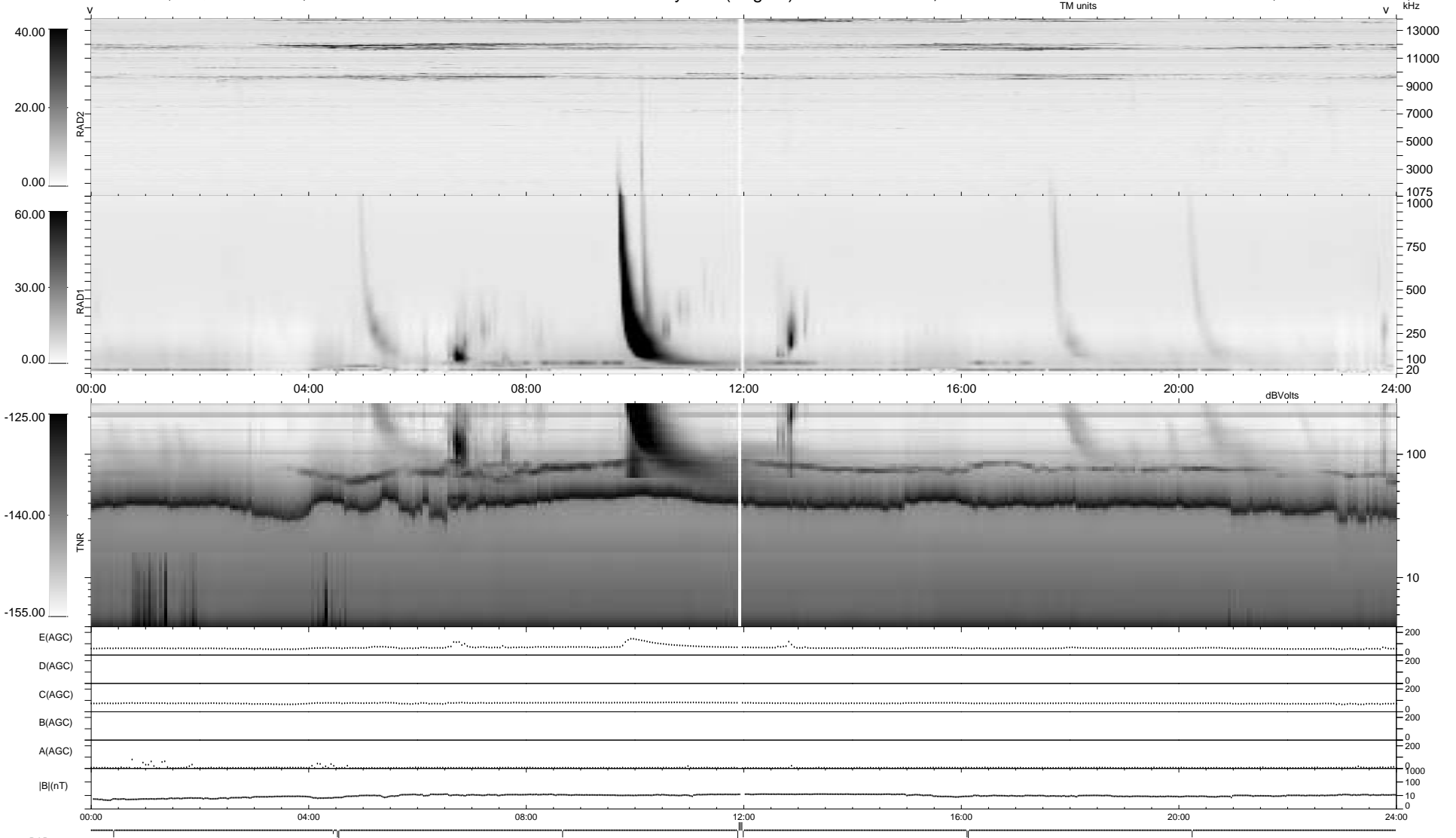


10 bad + 926 good MF/939MF projected (98%) - 3 missing MFs
 Avg interval = 180 secs
 Re = 230.57 (228.29, -26.93, -17.88 GSE)

1.7d VMS-SunOS LZ version = v01
 DAILY Thu Sep 25, 2008
 Re = 229.50 (227.06, -28.04, -17.98 GSE)

WIND/WAVES Summary Plot (Page 1) for 18-JUN-1995, DOY = 169



RAD2 Antenna Ey
 Mode LIN(1)
 SUM/SEP SUM
 Toggle OFF
 RAD1 Antenna Ex
 Mode LIS(0.2)
 SUM/SEP SUM
 Toggle OFF
 TNR Antenna ExEy
 Mode A-32
 Sweep ACE