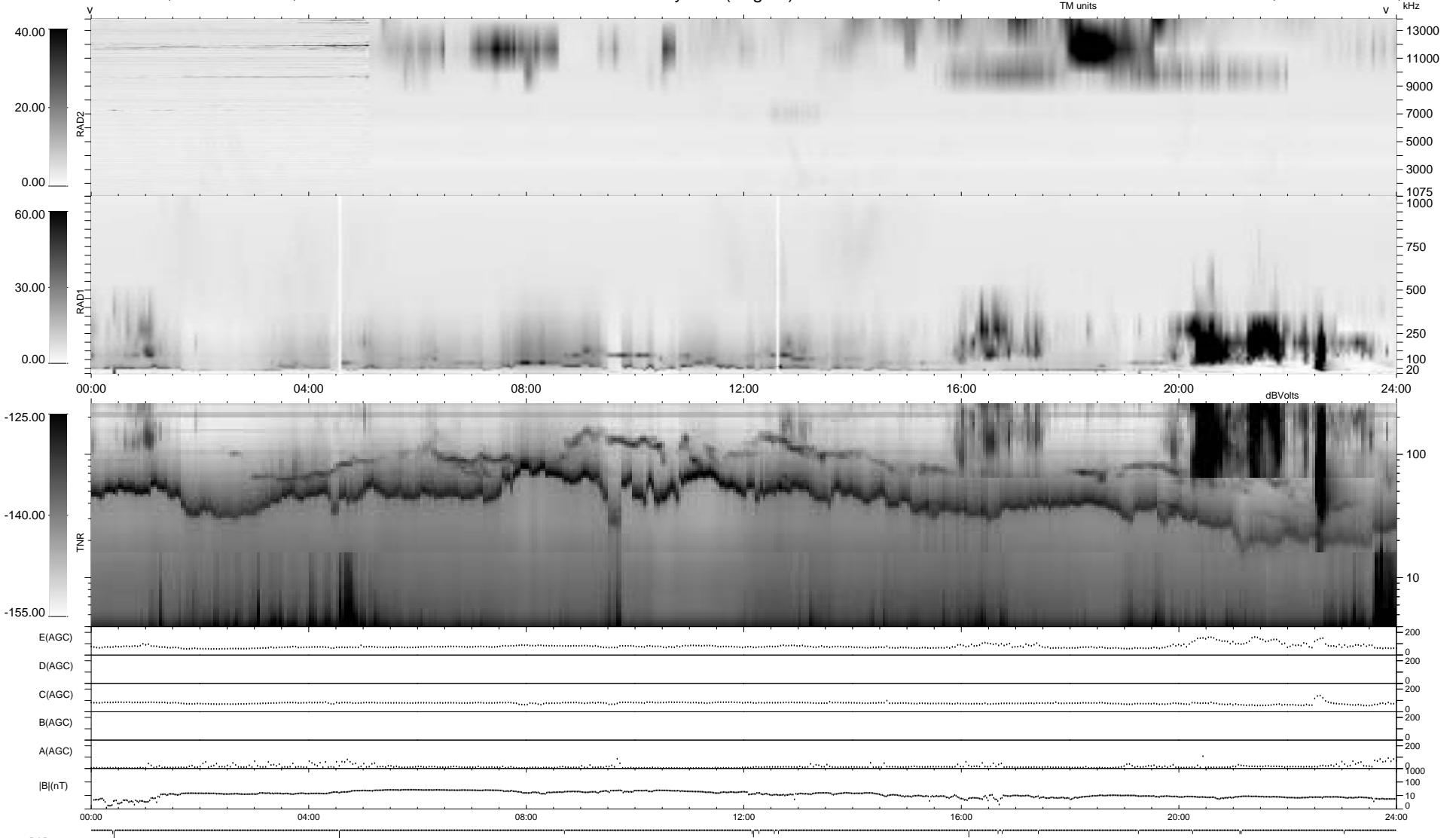


18 bad + 921 good MF/939MF projected (98%) - 0 missing MFs  
 Avg interval = 180 secs  
 Re = -246.74 (244.94, 29.29, -5.08 GSE)

1.7d VMS-SunOS LZ version = v01  
 DAILY Thu Sep 25, 2008  
 Re = 246.78 (245.19, 27.40, -5.64 GSE)

WIND/WAVES Summary Plot (Page 1) for 16-MAY-1995, DOY = 136



```

RAD2
Antenna Ey
Mode LIN(1) LIS(0.0)
SUM/SEP SUM
Toggle OFF

RAD1
Antenna Ex
Mode LIS(0.2)
SUM/SEP SUM
Toggle OFF

TNR
Antenna ExEy
Mode A-32
Sweep ACE
  
```