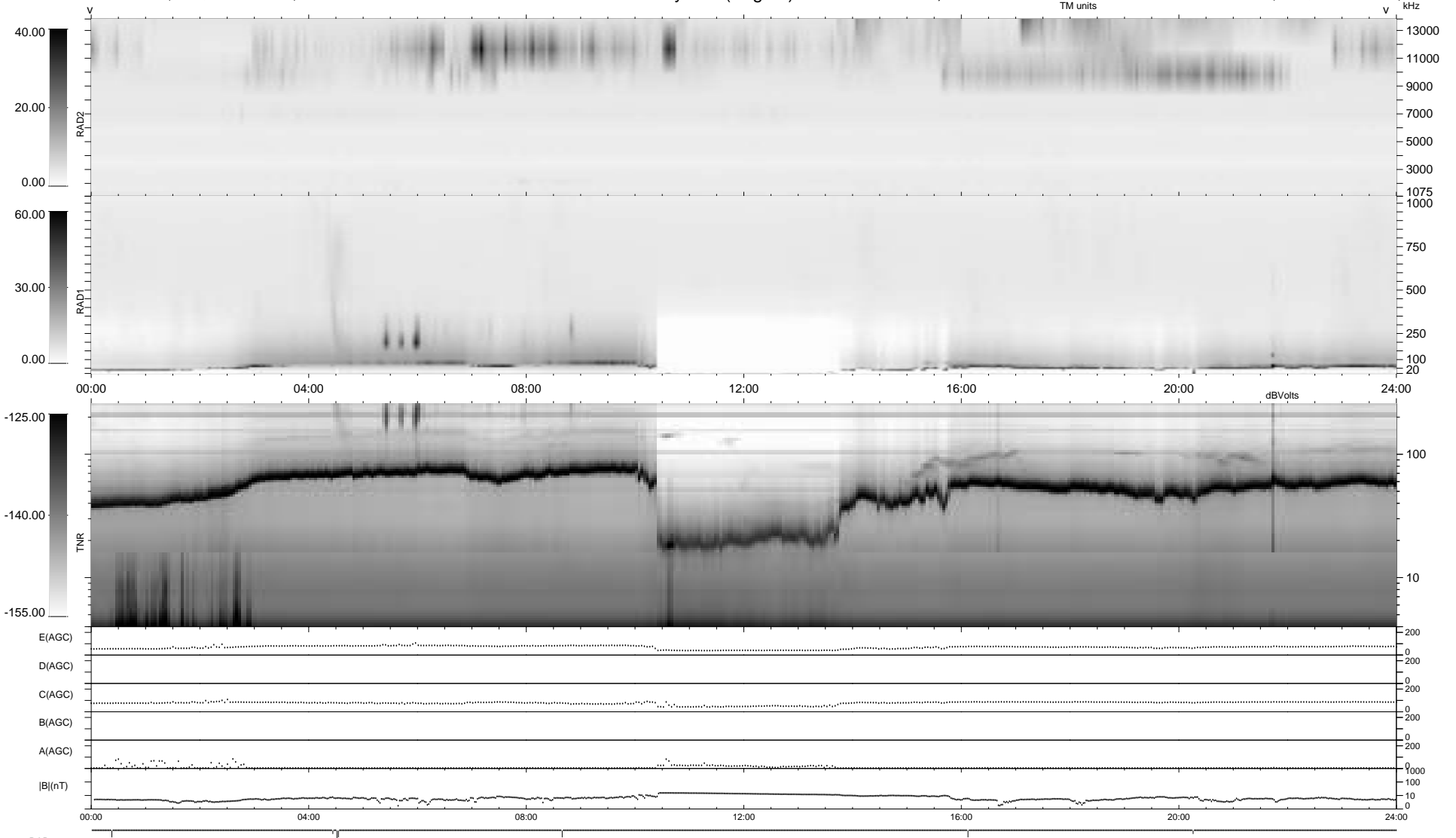


7 bad + 932 good MF/939MF projected (99%) - 0 missing MFs
 Avg interval = 180 secs
 Re = -246.71 (244.22, 34.85, -3.36 GSE)

1.7d VMS-SunOS LZ version = v01
 DAILY Thu Sep 25, 2008
 Re = 246.71 (244.45, 33.05, -3.93 GSE)

WIND/WAVES Summary Plot (Page 1) for 13-MAY-1995, DOY = 133



RAD2
 Antenna Ey
 Mode LIS(0.0)
 SUM/SEP SUM
 Toggle OFF

RAD1
 Antenna Ex
 Mode LIS(0.2)
 SUM/SEP SUM
 Toggle OFF

TNR
 Antenna ExEy
 Mode A-32
 Sweep ACE