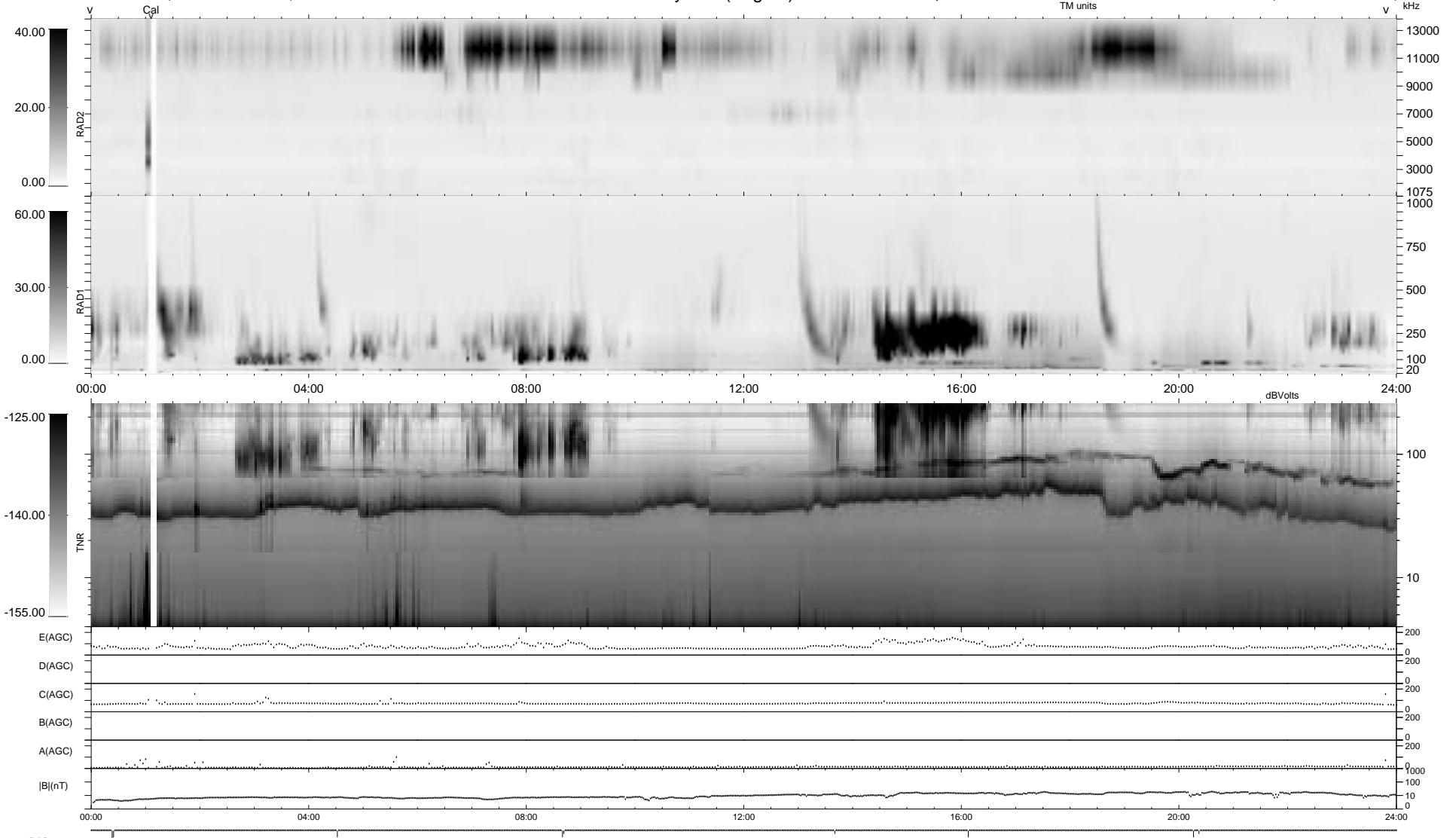


9 bad + 931 good MF/940MF projected (99%) - 0 missing MFs
 Avg interval = 180 secs
 Re = -243.09 (236.59, 55.42, 6.78 GSE)

1.7d VMS-SunOS LZ version = v01
 DAILY Thu Sep 25, 2008
 Re = 243.66 (237.35, 54.74, 6.21 GSE)

WIND/WAVES Summary Plot (Page 1) for 26-APR-1995, DOY = 116



```

RAD2
Antenna  Ey .....
Mode    LIS(0.0) .....
SUM/SEP SUM .....
Toggle  OFF .....

RAD1
Antenna  Ex .....
Mode    LIS(0.2) .....
SUM/SEP SUM .....
Toggle  OFF .....

TNR
Antenna  ExEy .....
Mode    A-32 .....
Sweep   ACE .....
  
```