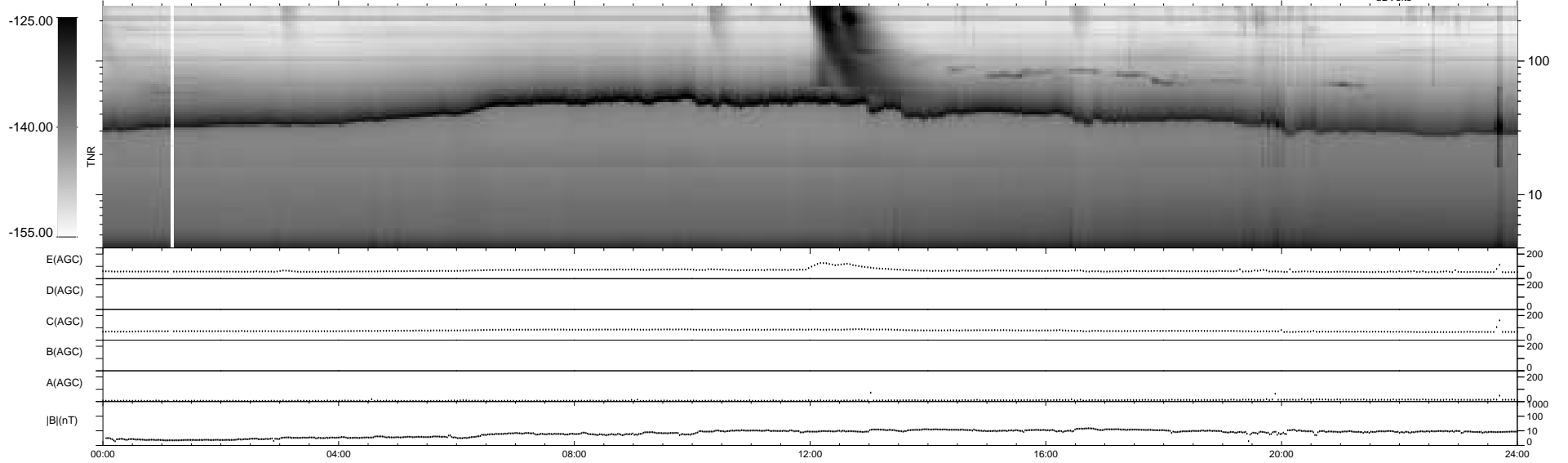
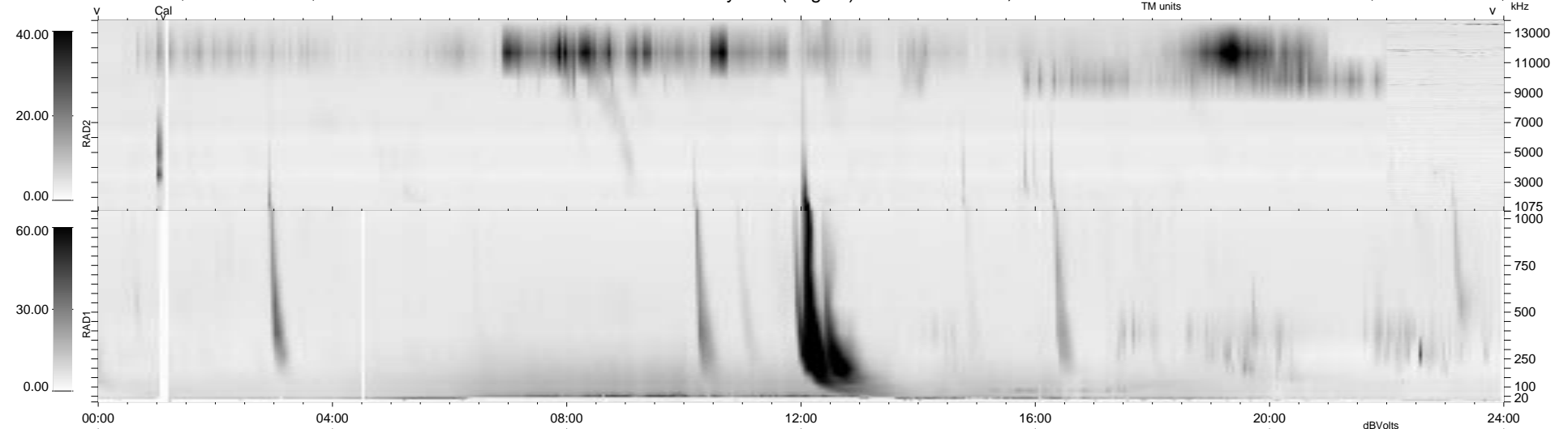


15 bad + 924 good MF/939MF projected (98%) - 0 missing MFs  
 Avg interval = 180 secs  
 Re = -240.45 (233.25, 57.74, 8.98 GSE)

1.7d VMS-SunOS LZ version = v01  
 DAILY Thu Sep 25, 2008  
 Re = 241.15 (234.11, 57.22, 8.45 GSE)

WIND/WAVES Summary Plot (Page 1) for 22-APR-1995, DOY = 112



RAD2  
 Antenna Ey .....  
 Mode LIS(0.0) .....  
 SUM/SEP SUM .....  
 Toggle OFF .....  
 RAD1  
 Antenna Ex .....  
 Mode LIS(0.2) .....  
 SUM/SEP SUM .....  
 Toggle OFF .....  
 TNR  
 Antenna ExEy .....  
 Mode A-32 .....  
 Sweep ACE .....  
 LIN(1)