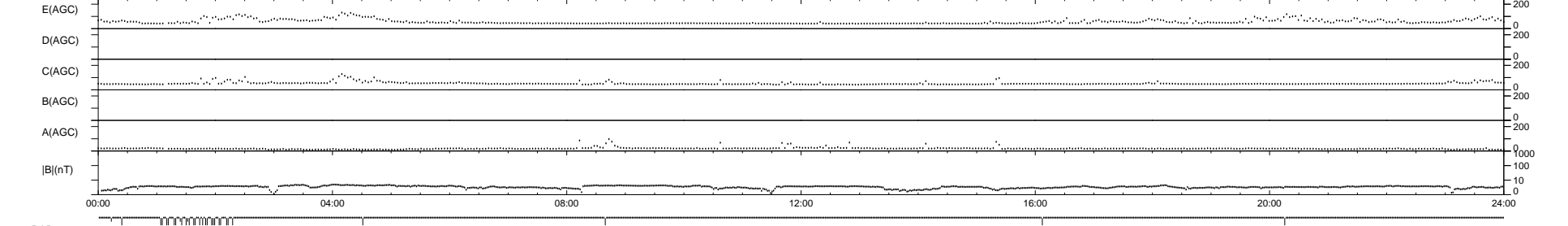
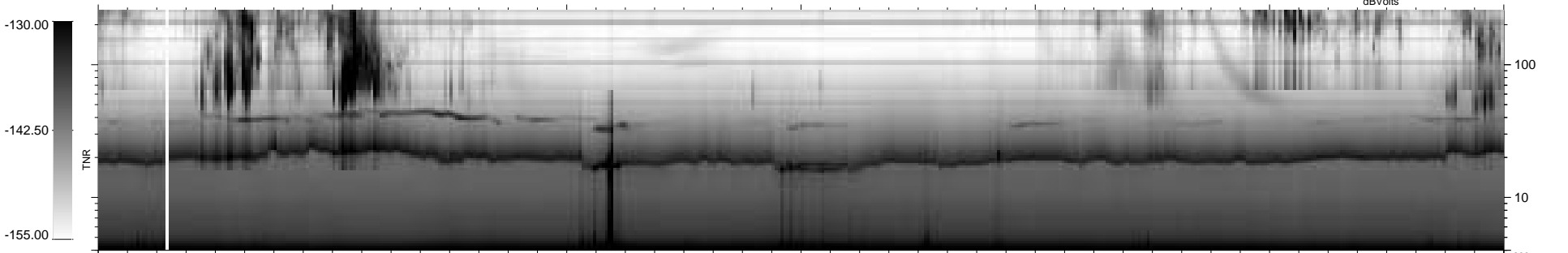
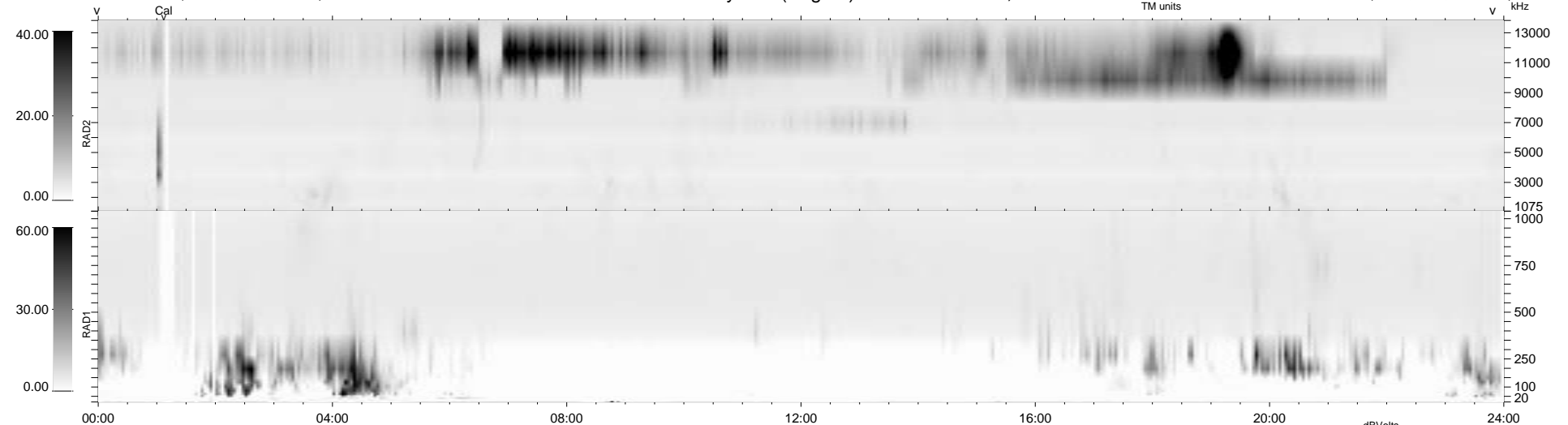


31 bad + 908 good MF/939MF projected (96%) - 0 missing MFs
 Avg interval = 180 secs
 Re = -234.45 (226.19, 60.27, 13.11 GSE)

1.7d VMS-SunOS LZ version = v01
 DAILY Thu Sep 25, 2008
 Re = 235.05 (226.84, 60.26, 12.71 GSE)

WIND/WAVES Summary Plot (Page 1) for 13-APR-1995, DOY = 103



```

RAD2
Antenna Ey
Mode LIS(0.0)
SUM/SEP SUM
Toggle OFF

RAD1
Antenna Ex
Mode LIS(0.2)
SUM/SEP SUM
Toggle OFF

TNR
Antenna ExEy
Mode A-32
Sweep ACE
  
```