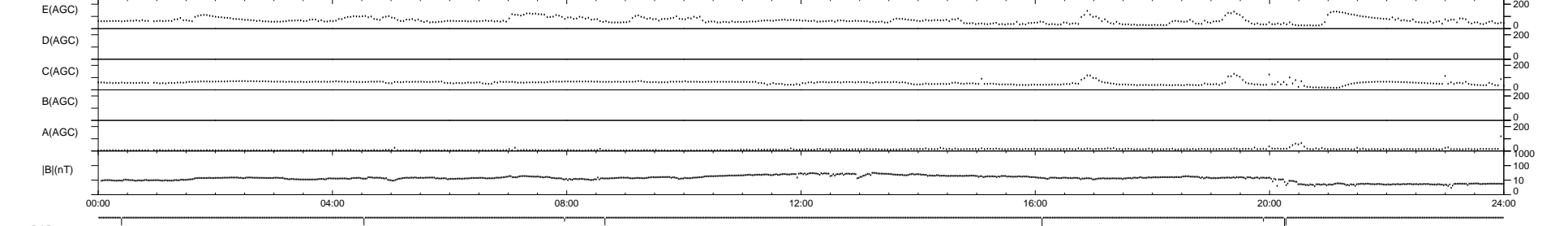
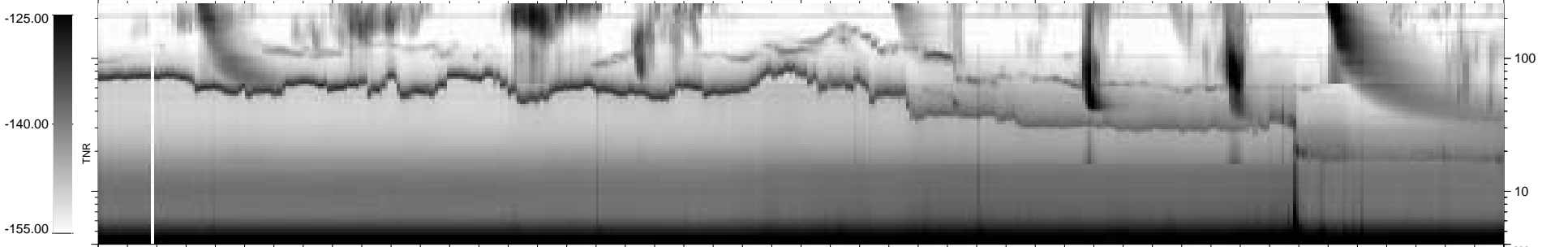
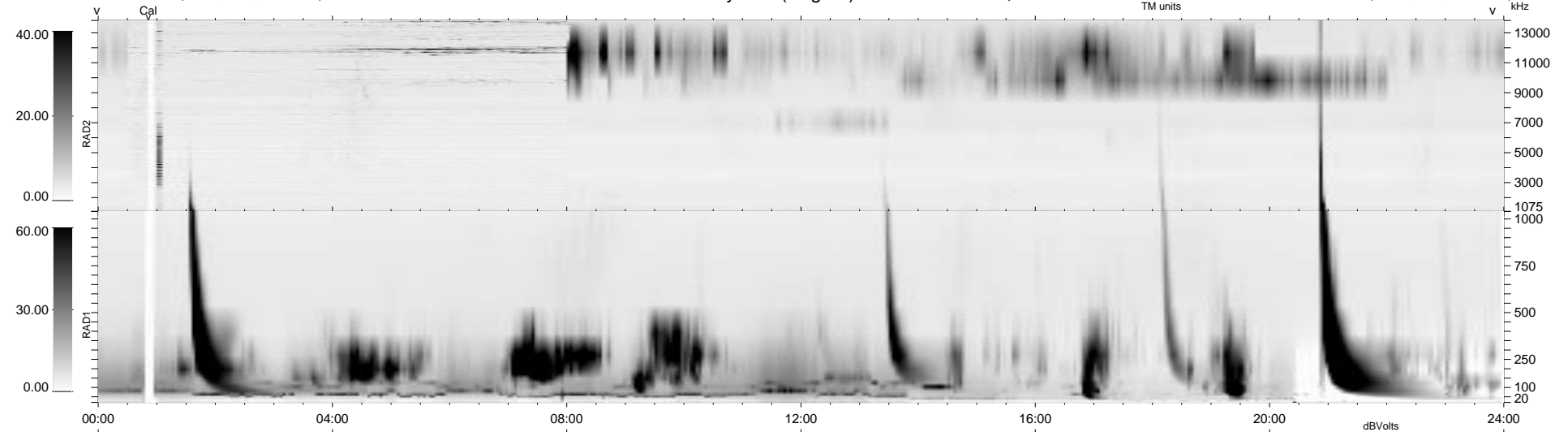


8 bad + 931 good MF/939MF projected (99%) - 0 missing MFs
 Avg interval = 180 secs
 Re = -230.73 (222.76, 58.16, 15.25 GSE)

1.7d VMS-SunOS LZ version = v02
 DAILY Thu Sep 25, 2008
 Re = 231.38 (223.30, 58.77, 14.93 GSE)

WIND/WAVES Summary Plot (Page 1) for 07-APR-1995, DOY = 97



RAD2
 Antenna Ey LIN(1) LIS(0,0)
 Mode LIS(0,0)
 SUM/SEP SUM
 Toggle OFF

RAD1
 Antenna Ex
 Mode LIS(0,2)
 SUM/SEP SUM
 Toggle OFF

TNR
 Antenna EyEx
 Mode B-32
 Sweep ACE