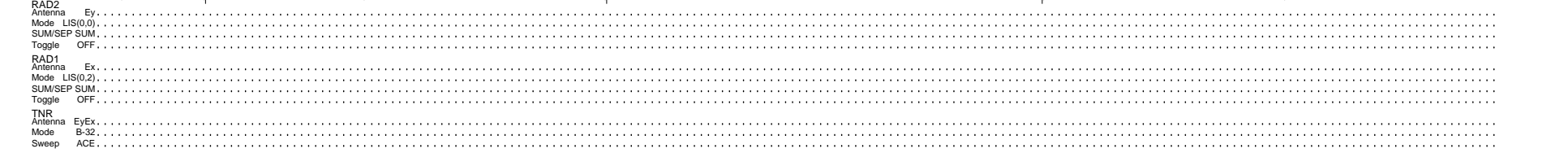
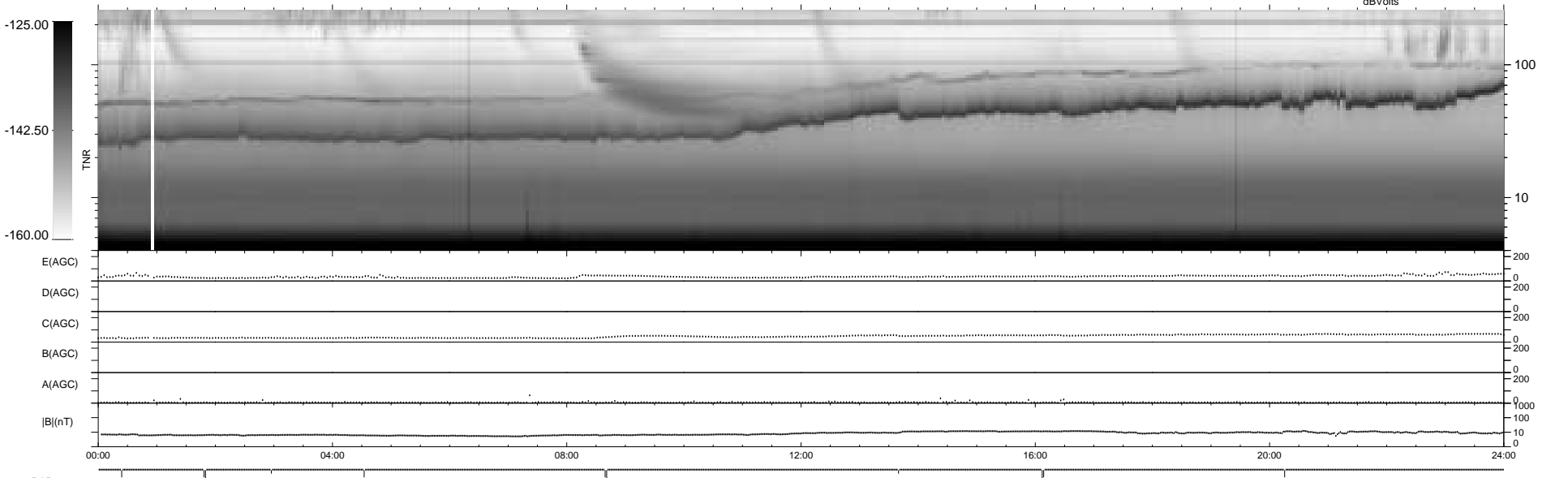
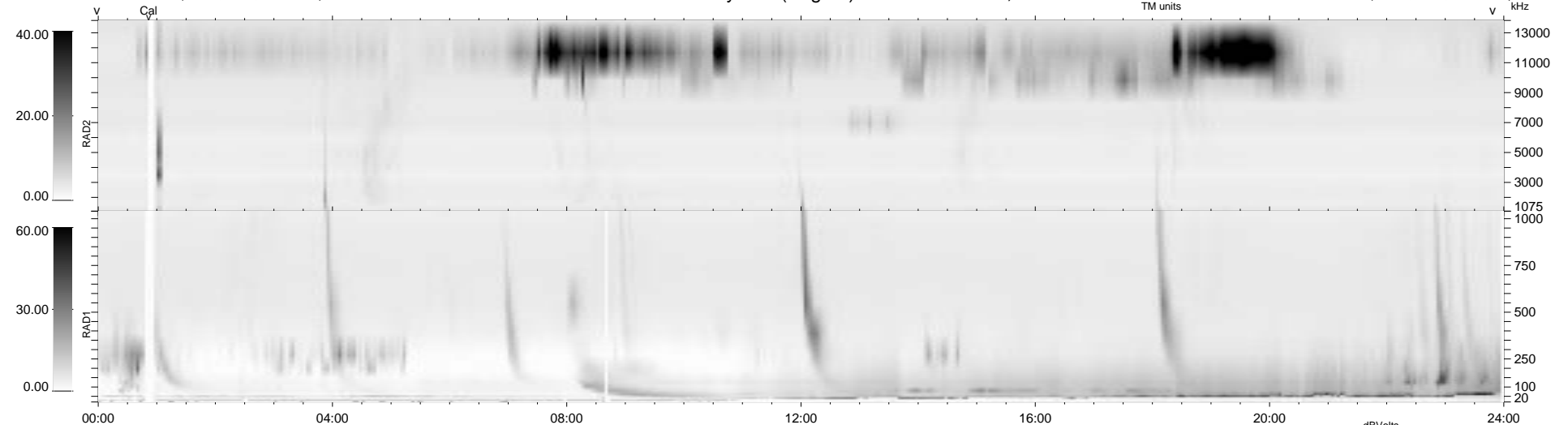


11 bad + 928 good MF/939MF projected (98%) - 0 missing MFs  
 Avg interval = 180 secs  
 Re = 230.06 (222.23, 57.44, 15.55 GSE)

1.7d VMS-SunOS LZ version = v01  
 DAILY Thu Sep 25, 2008  
 Re = 230.73 (222.76, 58.15, 15.25 GSE)

WIND/WAVES Summary Plot (Page 1) for 06-APR-1995, DOY = 96



RAD2  
 Antenna Ey  
 Mode LIS(0.0)  
 SUM/SEP SUM  
 Toggle OFF

RAD1  
 Antenna Ex  
 Mode LIS(0.2)  
 SUM/SEP SUM  
 Toggle OFF

TNR  
 Antenna EyEx  
 Mode B-32  
 Sweep ACE