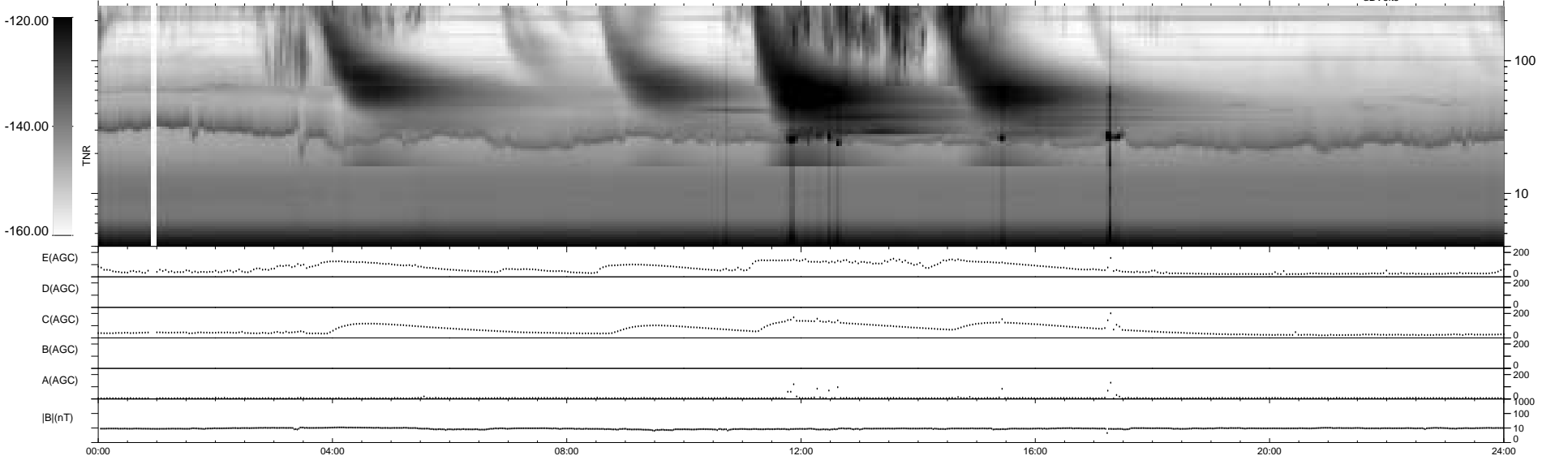
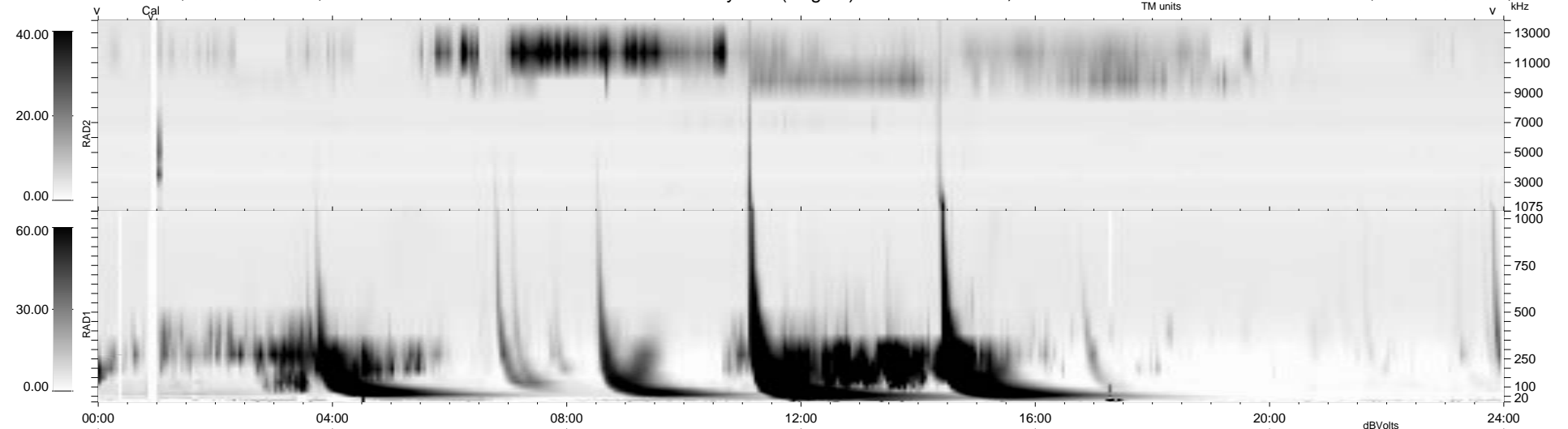


6 bad + 933 good MF/939MF projected (99%) - 0 missing MFs
 Avg interval = 180 secs
 Re = 227.05 (220.02, 53.57, 16.58 GSE)

1.7d VMS-SunOS LZ version = v01
 DAILY Thu Sep 25, 2008
 Re = 227.85 (220.59, 54.67, 16.36 GSE)

WIND/WAVES Summary Plot (Page 1) for 02-APR-1995, DOY = 92



```

RAD2
Antenna Ey .....
Mode LIS(0.0) .....
SUM/SEP SUM .....
Toggle OFF .....

RAD1
Antenna Ex .....
Mode LIS(0.2) .....
SUM/SEP SUM .....
Toggle OFF .....

TNR
Antenna EyEx .....
Mode B-32 .....
Sweep ACE .....
  
```