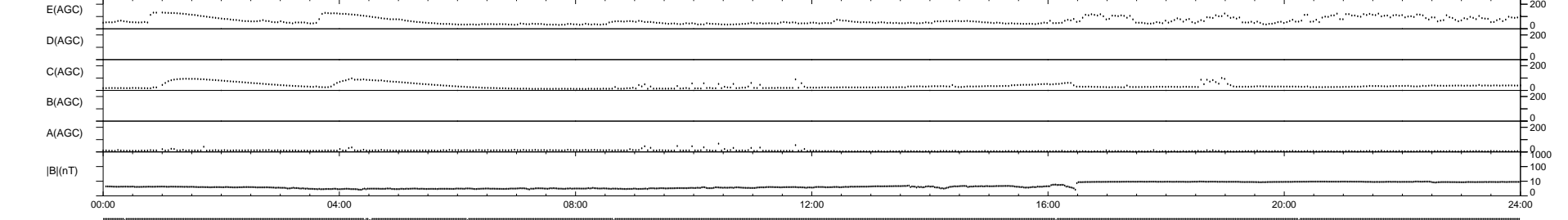
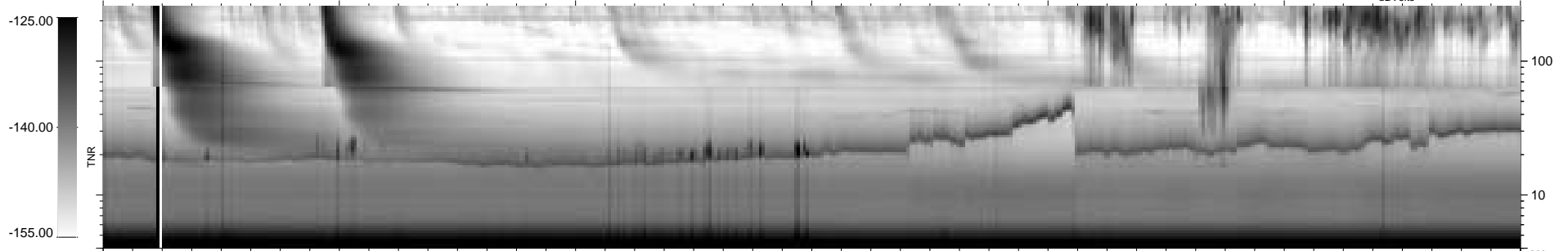
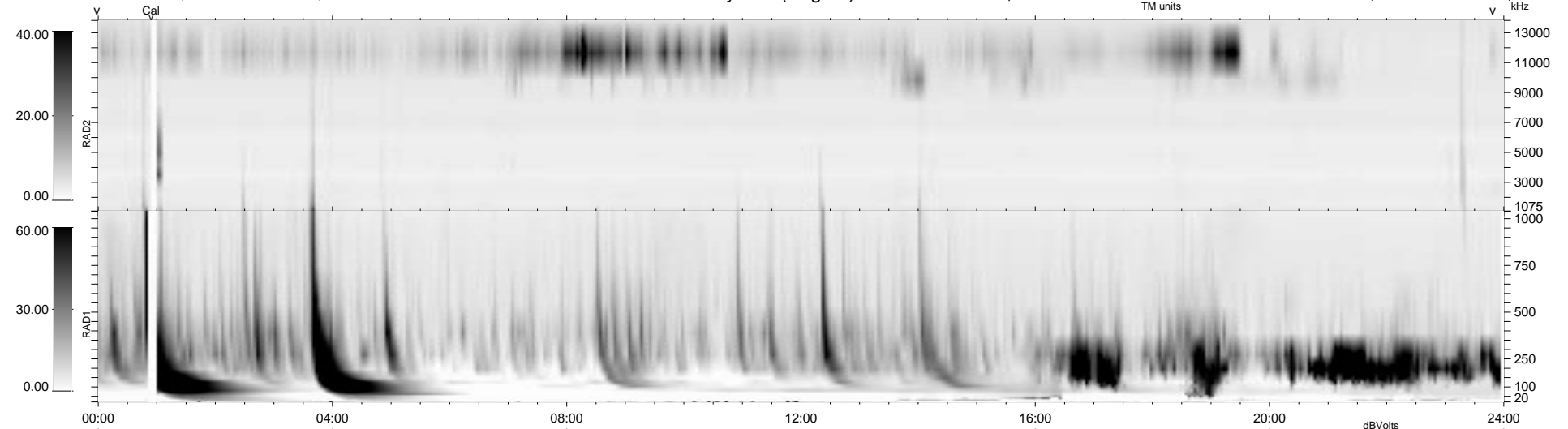


8 bad + 931 good MF/939MF projected (99%) - 0 missing MFs  
 Avg interval = 180 secs  
 Re = 226.22 (219.43, 52.37, 16.78 GSE)

1.7d VMS-SunOS LZ version = v01  
 DAILY Thu Sep 25, 2008  
 Re = 227.05 (220.02, 53.56, 16.58 GSE)

### WIND/WAVES Summary Plot (Page 1) for 01-APR-1995, DOY = 91



```

RAD2
Antenna Ey .....
Mode LIS(0.0) .....
SUM/SEP SUM .....
Toggle OFF .....

RAD1
Antenna Ex .....
Mode LIS(0.2) .....
SUM/SEP SUM .....
Toggle OFF .....

TNR
Antenna EyEx .....
Mode B-32 .....
Sweep ACE .....
  
```