

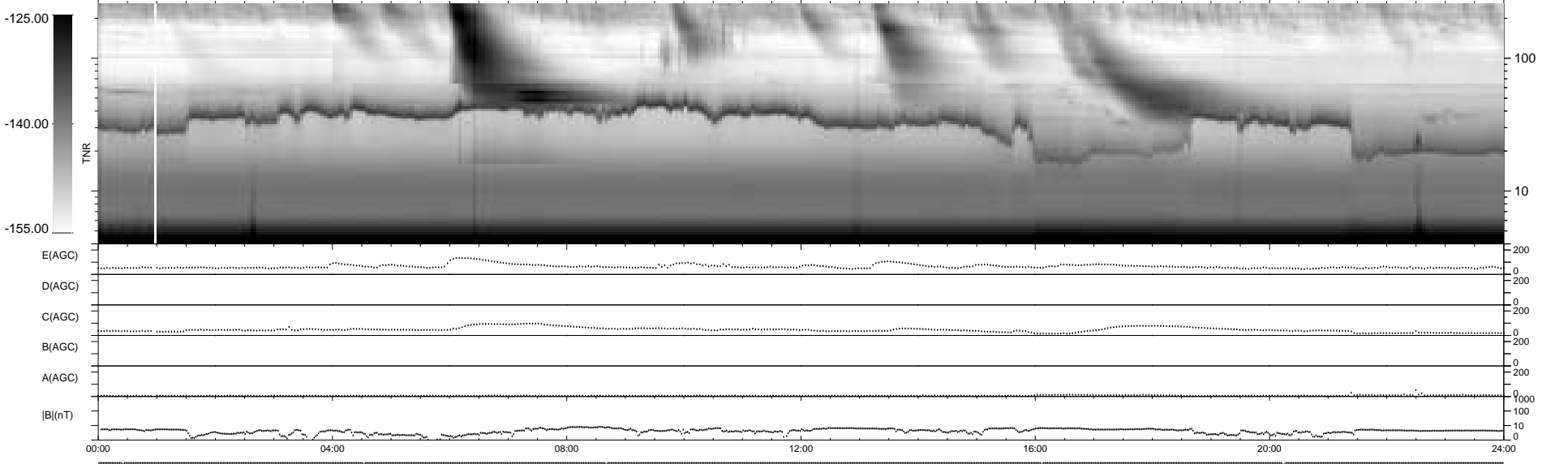
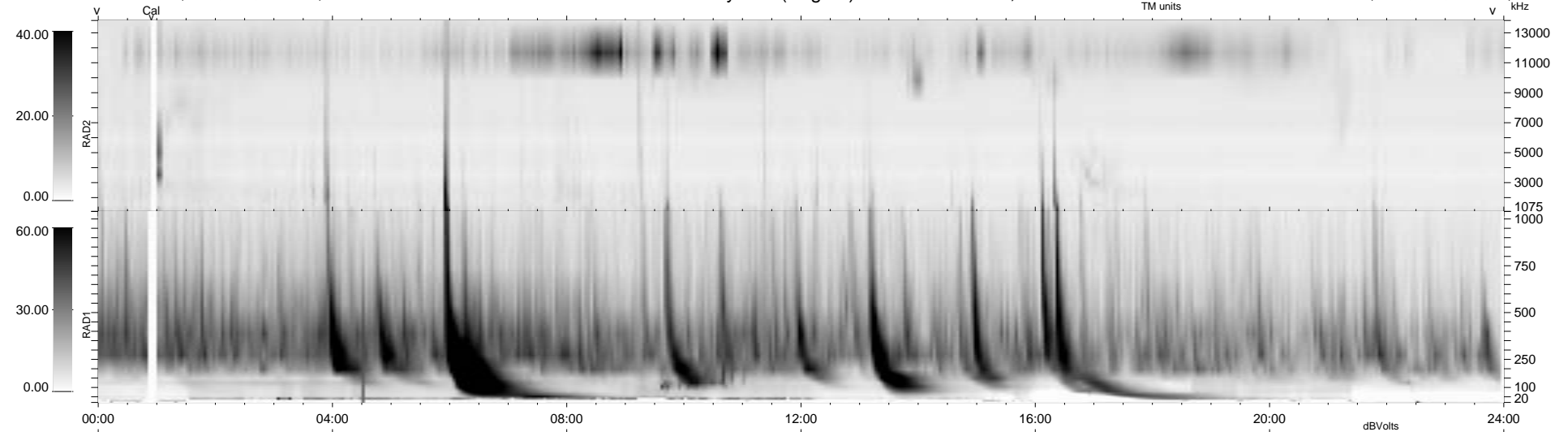
6 bad + 933 good MF/939MF projected (99%) - 0 missing MFs
 Avg interval = 180 secs
 Re = 225.35 (218.83, 51.10, 16.97 GSE)

1.7d VMS-SunOS

LZ version = v01

WIND/WAVES Summary Plot (Page 1) for 31-MAR-1995, DOY = 90

DAILY Thu Sep 25, 2008
 Re = 226.21 (219.43, 52.37, 16.79 GSE)



RAD2
 Antenna Ey
 Mode LIS(0.0)
 SUM/SEP SUM
 Toggle OFF

RAD1
 Antenna Ex
 Mode LIS(0.2)
 SUM/SEP SUM
 Toggle OFF

TNR
 Antenna EyEx
 Mode B-32
 Sweep ACE