

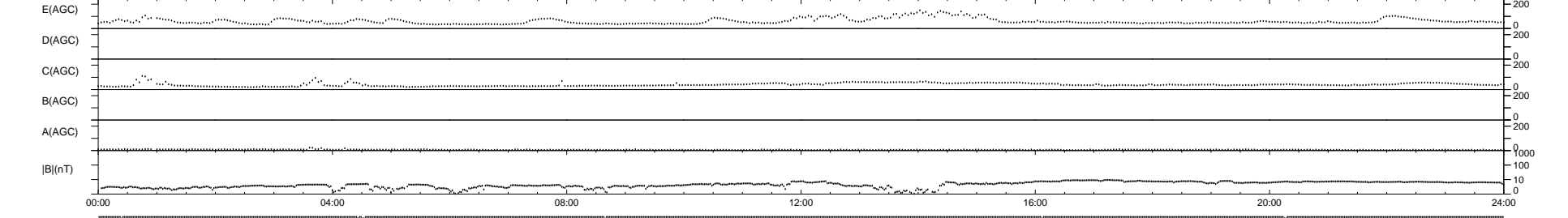
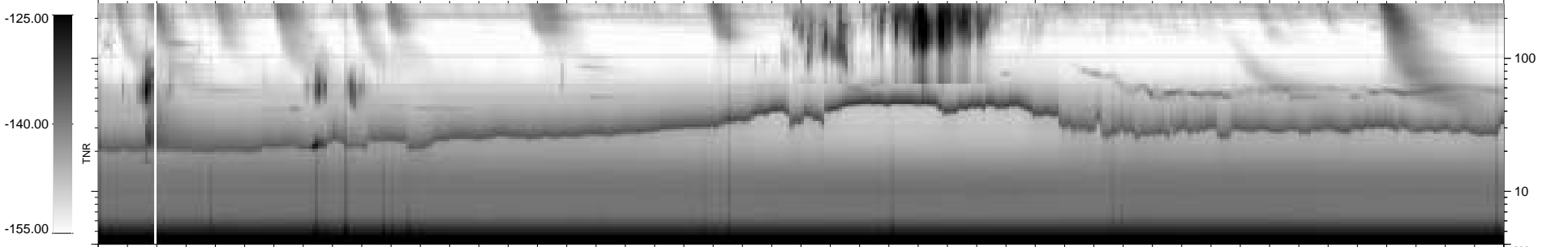
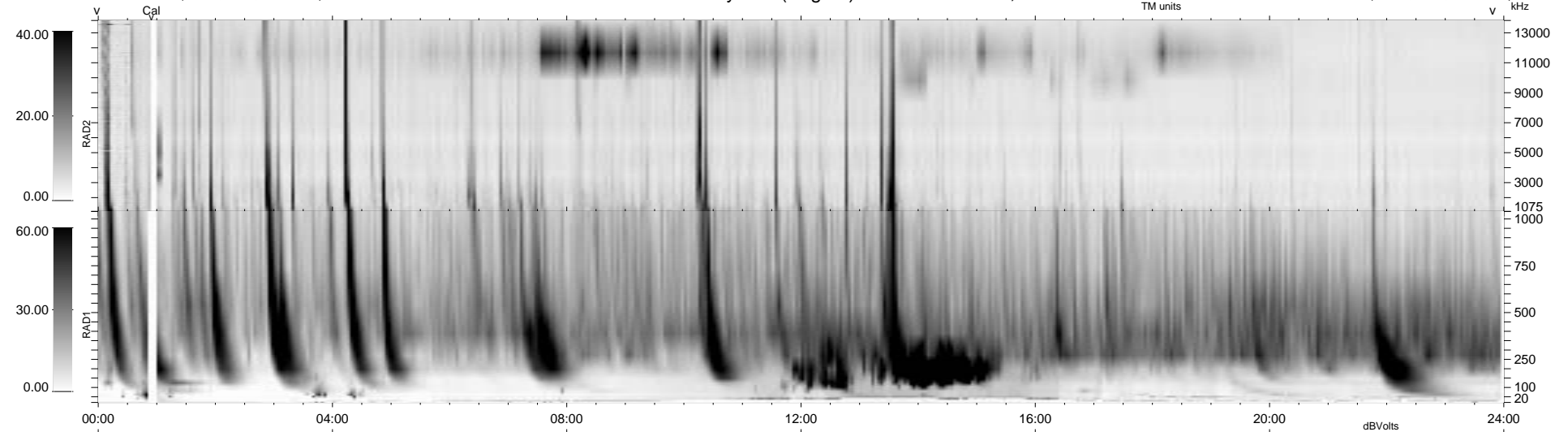
8 bad + 931 good MF/939MF projected (99%) - 0 missing MFs  
 Avg interval = 180 secs  
 Re = 224.46 (218.20, 49.76, 17.12 GSE)

1.7d VMS-SunOS

LZ version = v01

WIND/WAVES Summary Plot (Page 1) for 30-MAR-1995, DOY = 89

DAILY Thu Sep 25, 2008  
 Re = 225.35 (218.82, 51.09, 16.97 GSE)



```

RAD2
Antenna Ey ..... LIS(0.0) .....
Mode LIN(1) ..... LIS(0.0) .....
SUM/SEP SUM .....
Toggle OFF .....

RAD1
Antenna Ex .....
Mode LIS(0.2) .....
SUM/SEP SUM .....
Toggle OFF .....

TNR
Antenna EyEx .....
Mode B-32 .....
Sweep ACE .....
  
```