

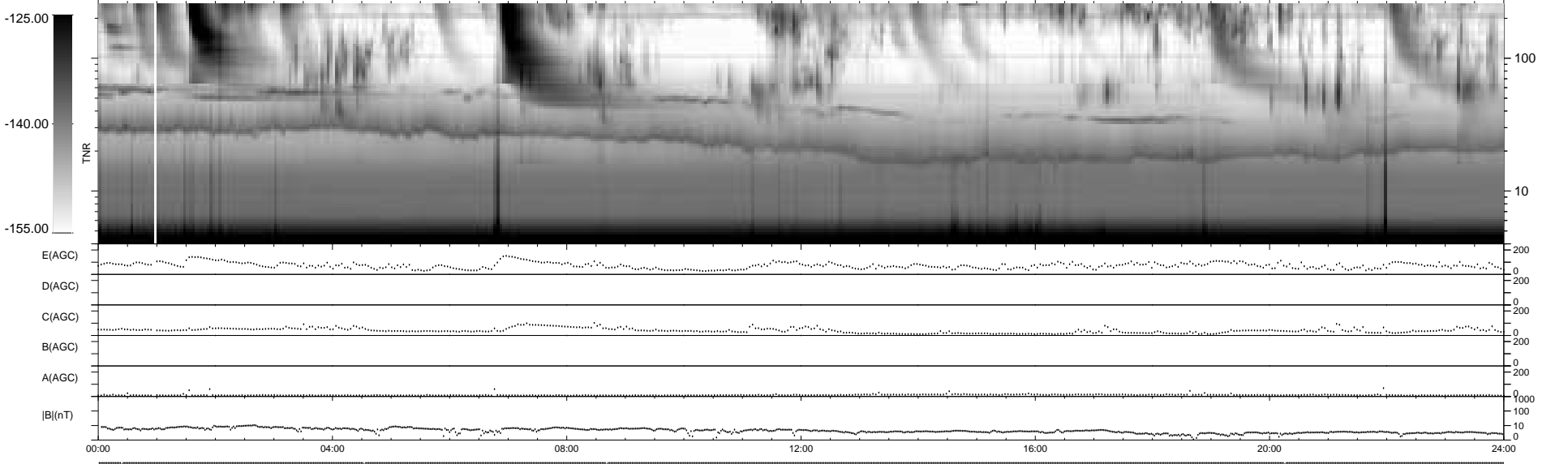
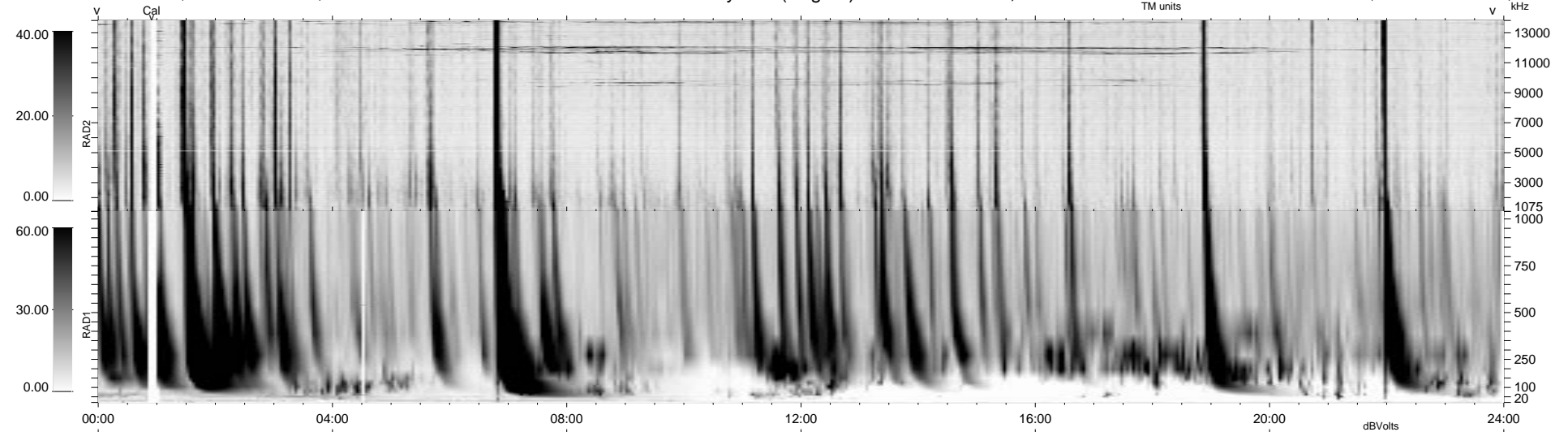
4 bad + 935 good MF/939MF projected (99%) - 0 missing MFs  
 Avg interval = 180 secs  
 Re = -223.53 (217.55, 48.35, 17.26 GSE)

1.7d VMS-SunOS

LZ version = v01

WIND/WAVES Summary Plot (Page 1) for 29-MAR-1995, DOY = 88

DAILY Thu Sep 25, 2008  
 Re = 224.45 (218.19, 49.75, 17.13 GSE)



```

RAD2
Antenna Ey .....
Mode LIN(1) .....
SUM/SEP SUM .....
Toggle OFF .....

RAD1
Antenna Ex .....
Mode LIS(0.2) .....
SUM/SEP SUM .....
Toggle OFF .....

TNR
Antenna EyEx .....
Mode B-32 .....
Sweep ACE .....
  
```