

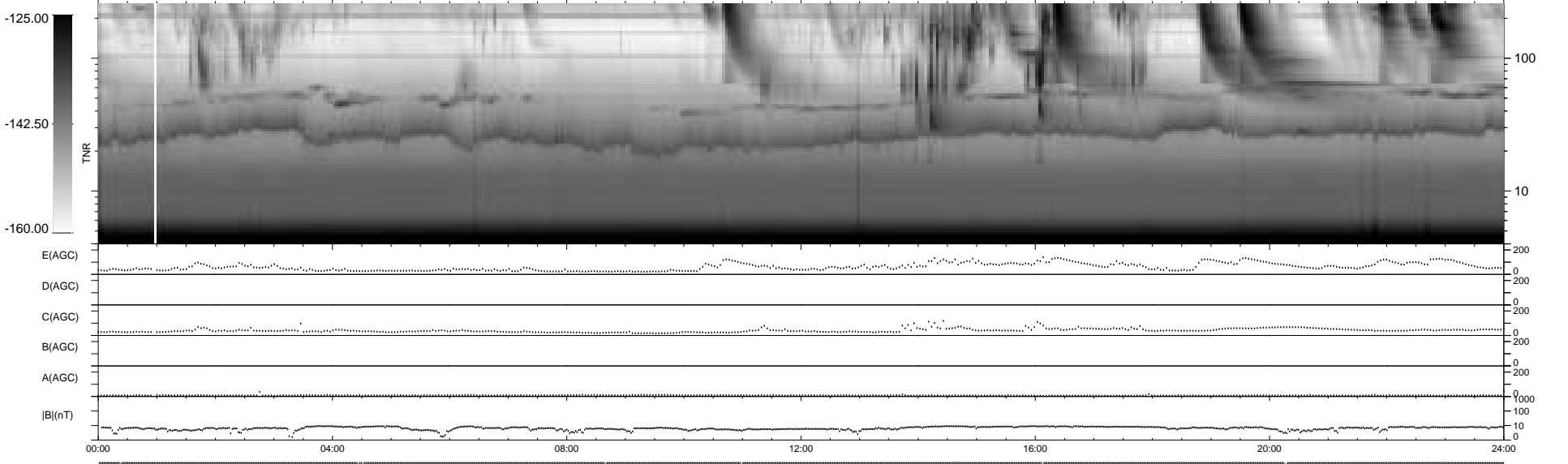
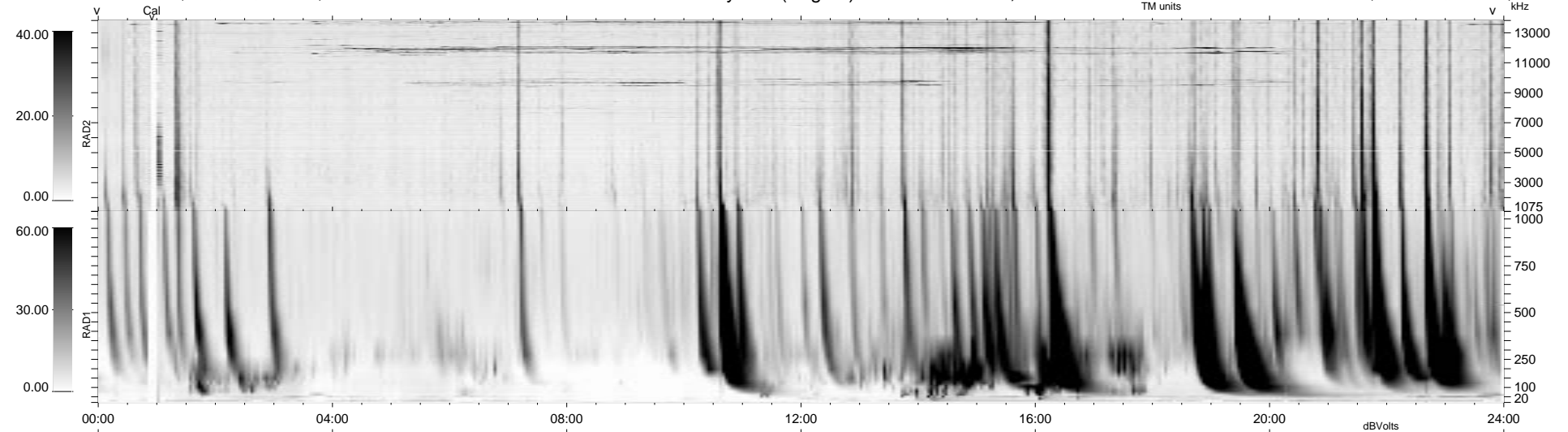
8 bad + 931 good MF/939MF projected (99%) - 0 missing MFs  
 Avg interval = 180 secs  
 Re = 222.58 (216.89, 46.89, 17.36 GSE)

1.7d VMS-SunOS

LZ version = v01

WIND/WAVES Summary Plot (Page 1) for 28-MAR-1995, DOY = 87

DAILY Thu Sep 25, 2008  
 Re = 223.52 (217.55, 48.34, 17.26 GSE)



RAD2  
 Antenna Ey ..... LIN(1) .....  
 Mode LIS(0.0) .....  
 SUM/SEP SUM .....  
 Toggle OFF .....  
 RAD1  
 Antenna Ex .....  
 Mode LIS(0.2) .....  
 SUM/SEP SUM .....  
 Toggle OFF .....  
 TNR  
 Antenna EyEx .....  
 Mode B-32 .....  
 Sweep ACE .....