

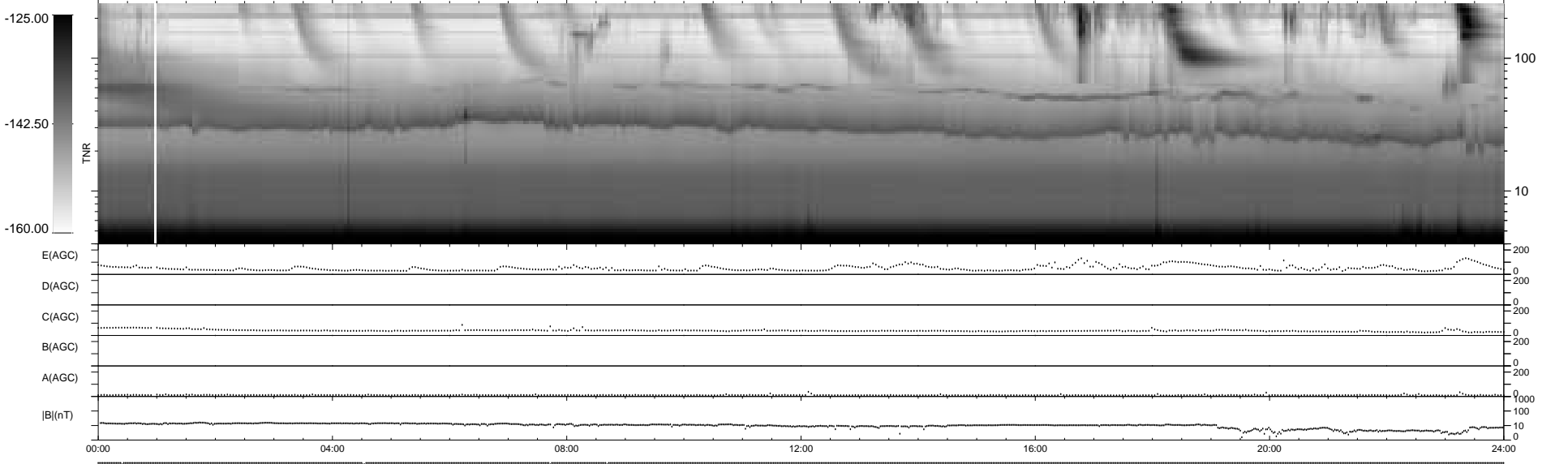
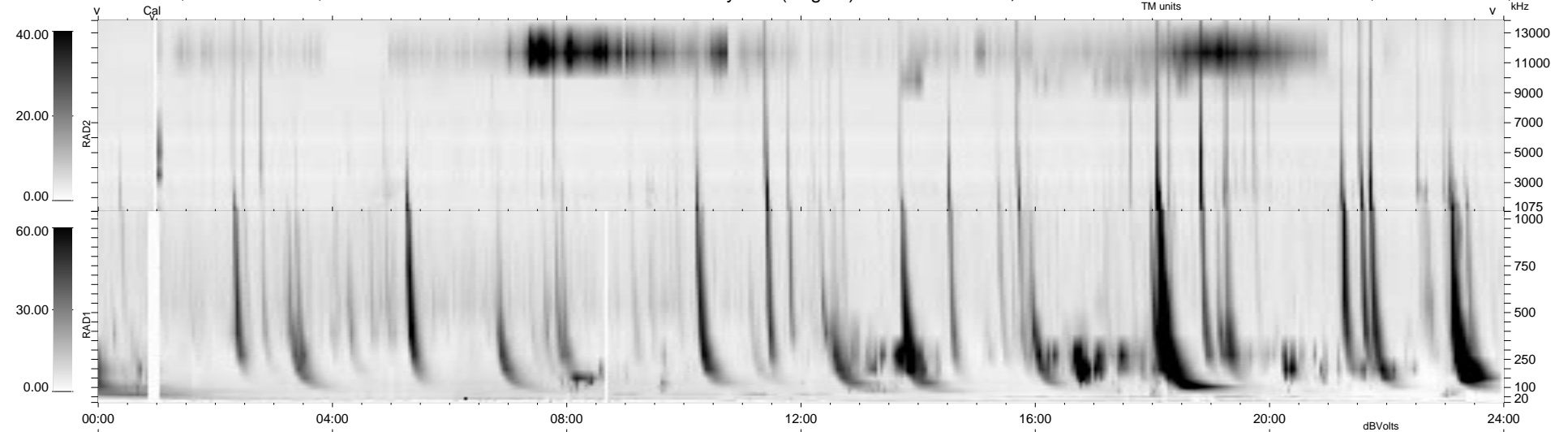
5 bad + 935 good MF/940MF projected (99%) - 0 missing MFs
 Avg interval = 180 secs
 Re = 221.61 (216.22, 45.38, 17.44 GSE)

1.7d VMS-SunOS

LZ version = v01

WIND/WAVES Summary Plot (Page 1) for 27-MAR-1995, DOY = 86

DAILY Thu Sep 25, 2008
 Re = 222.57 (216.89, 46.88, 17.36 GSE)



RAD2
 Antenna Ey
 Mode LIS(0.0)
 SUM/SEP SUM
 Toggle OFF

RAD1
 Antenna Ex
 Mode LIS(0.2)
 SUM/SEP SUM
 Toggle OFF

TNR
 Antenna EyEx
 Mode B-32
 Sweep ACE