

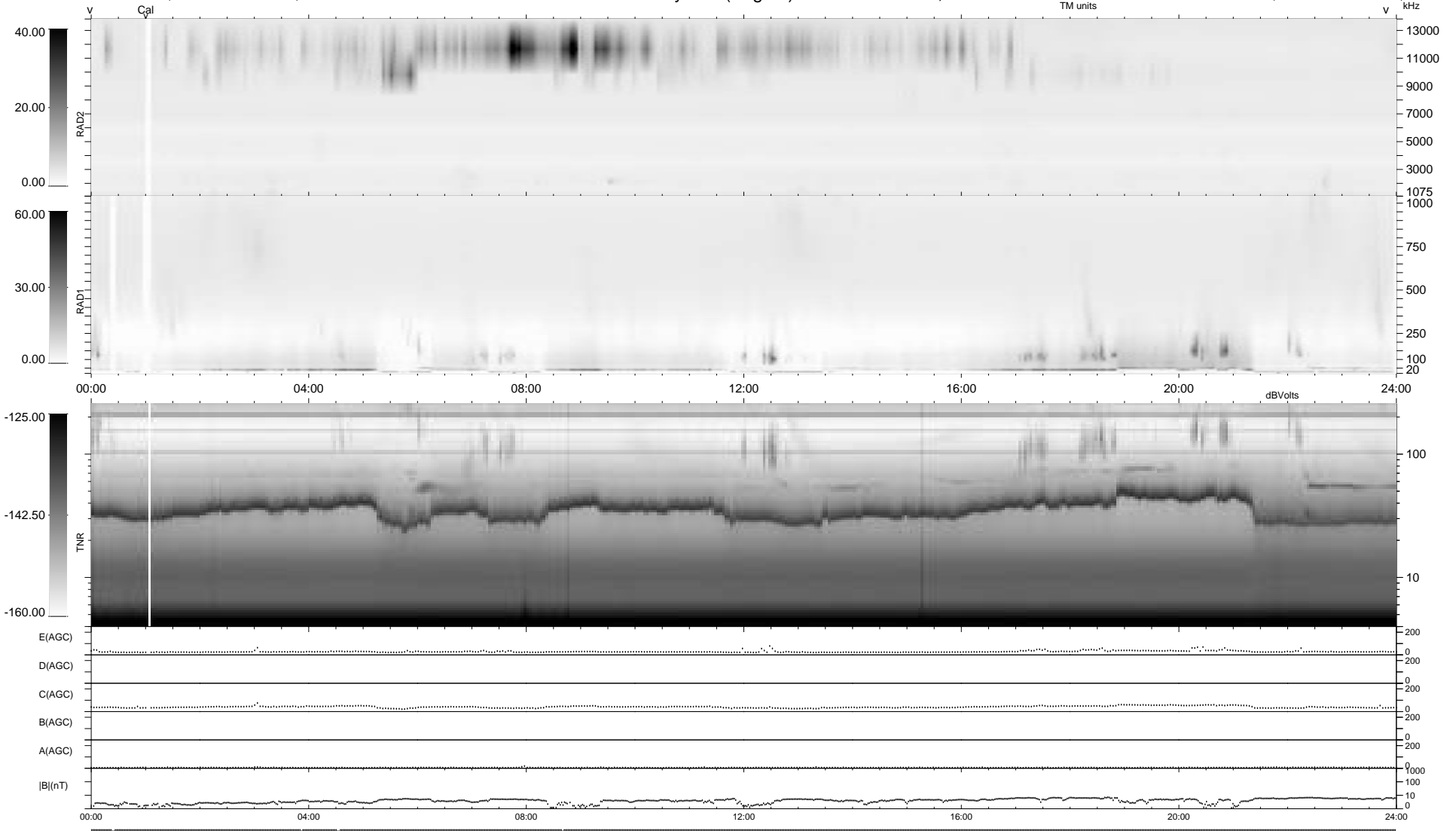
6 bad + 933 good MF/939MF projected (99%) - 0 missing MFs
 Avg interval = 180 secs
 Re = 212.67 (210.08, 28.52, 16.74 GSE)

1.7d VMS-SunOS

LZ version = v01

WIND/WAVES Summary Plot (Page 1) for 17-MAR-1995, DOY = 76

DAILY Thu Sep 25, 2008
 Re = 213.39 (210.54, 30.33, 16.93 GSE)



```

RAD2
Antenna Ey
Mode LIS(0.0)
SUM/SEP SUM
Toggle OFF

RAD1
Antenna Ex
Mode LIS(0.2)
SUM/SEP SUM
Toggle OFF

TNR
Antenna EyEx
Mode B-32
Sweep ACE
  
```