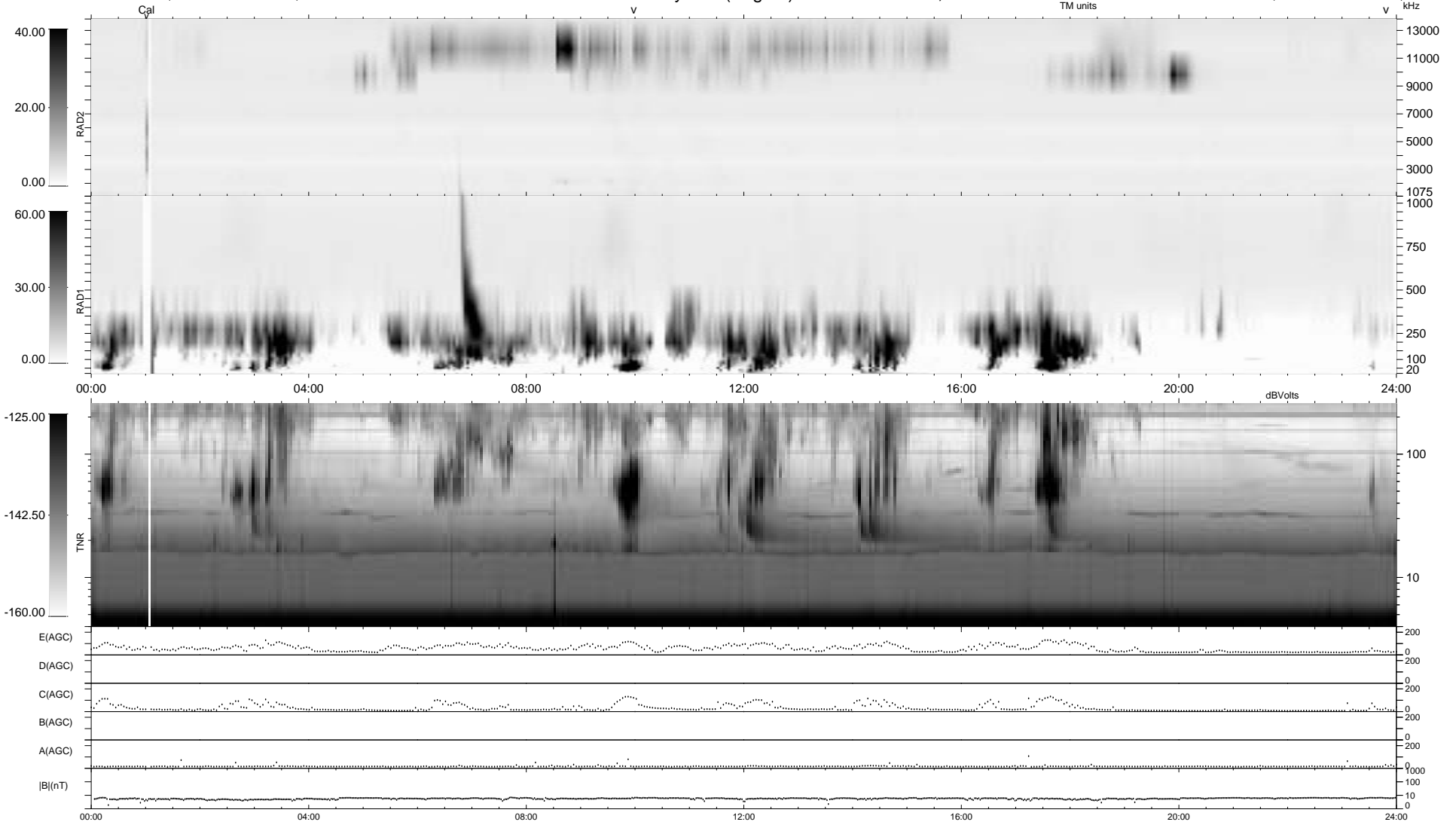


2 bad + 937 good MF/939MF projected (99%) - 0 missing MFs
 Avg interval = 180 secs
 Re = - 210.45 (208.75, 21.52, 15.89 GSE)

1.7d VMS-SunOS LZ version = v01
 DAILY Thu Sep 25, 2008
 Re = 210.77 (208.93, 22.70, 16.05 GSE)

WIND/WAVES Summary Plot (Page 1) for 13-MAR-1995, DOY = 72



```

RAD2
Antenna Ey .....
Mode LIS(0.0) .....
SUM/SEP SUM .....
Toggle OFF .....

RAD1
Antenna Ex .....
Mode LIS(0.2) .....
SUM/SEP SUM .....
Toggle OFF .....

TNR
Antenna EyEx .....
Mode B-32 .....
Sweep ACE .....
  
```