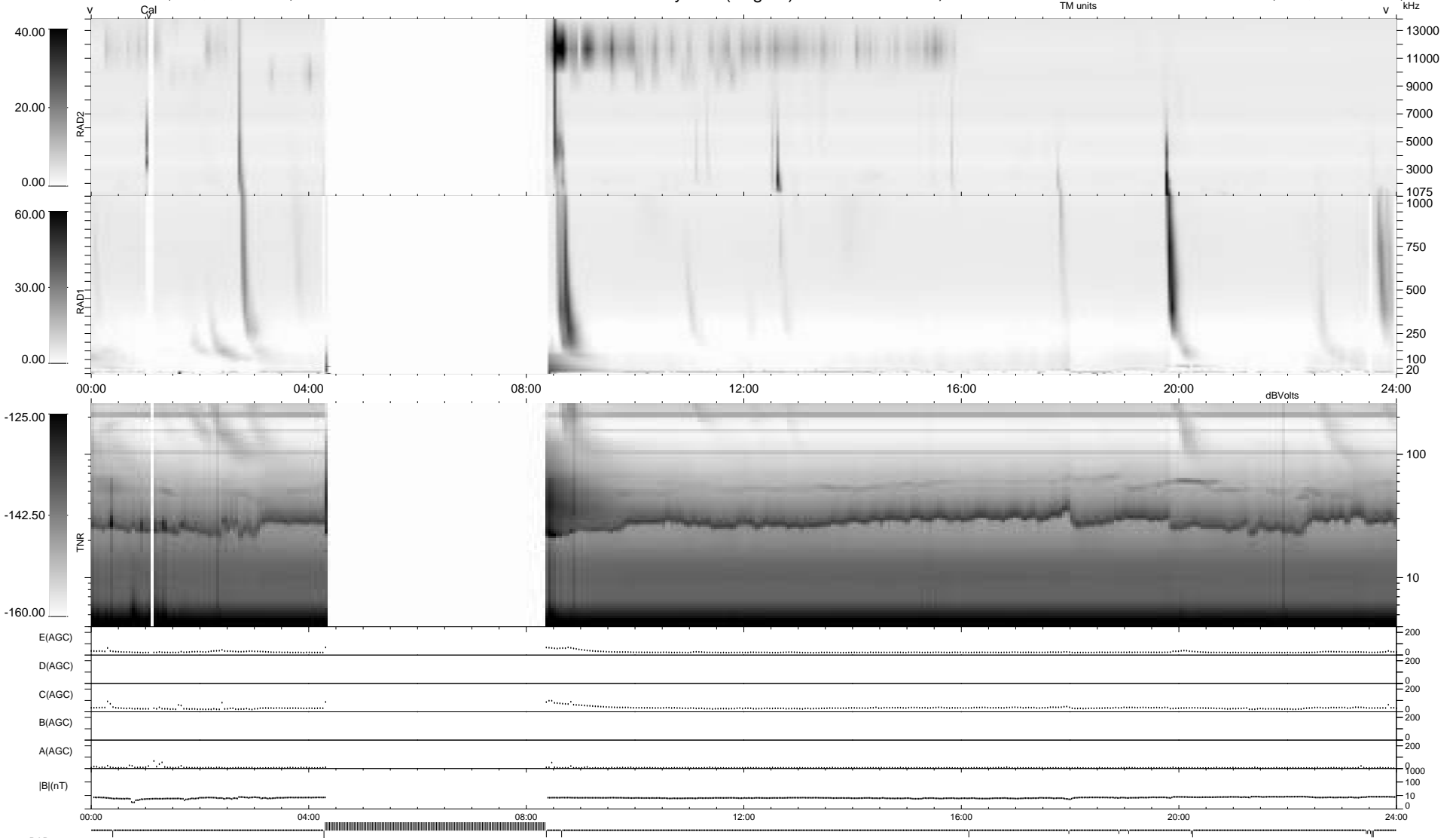


15 bad + 765 good MF/939MF projected (81%) - 159 missing MFs
 Avg interval = 180 secs
 Re = 208.04 (207.35, 9.49, 14.08 GSE)

1.7d VMS-SunOS LZ version = v01
 DAILY Thu Sep 25, 2008
 Re = 208.42 (207.58, 11.82, 14.46 GSE)

WIND/WAVES Summary Plot (Page 1) for 08-MAR-1995, DOY = 67



RAD2
 Antenna Ey
 Mode LIS(0.0)
 SUM/SEP SUM
 Toggle OFF

RAD1
 Antenna Ex
 Mode LIS(0.2)
 SUM/SEP SUM
 Toggle OFF

TNR
 Antenna EyEx
 Mode B-32
 Sweep ACE