

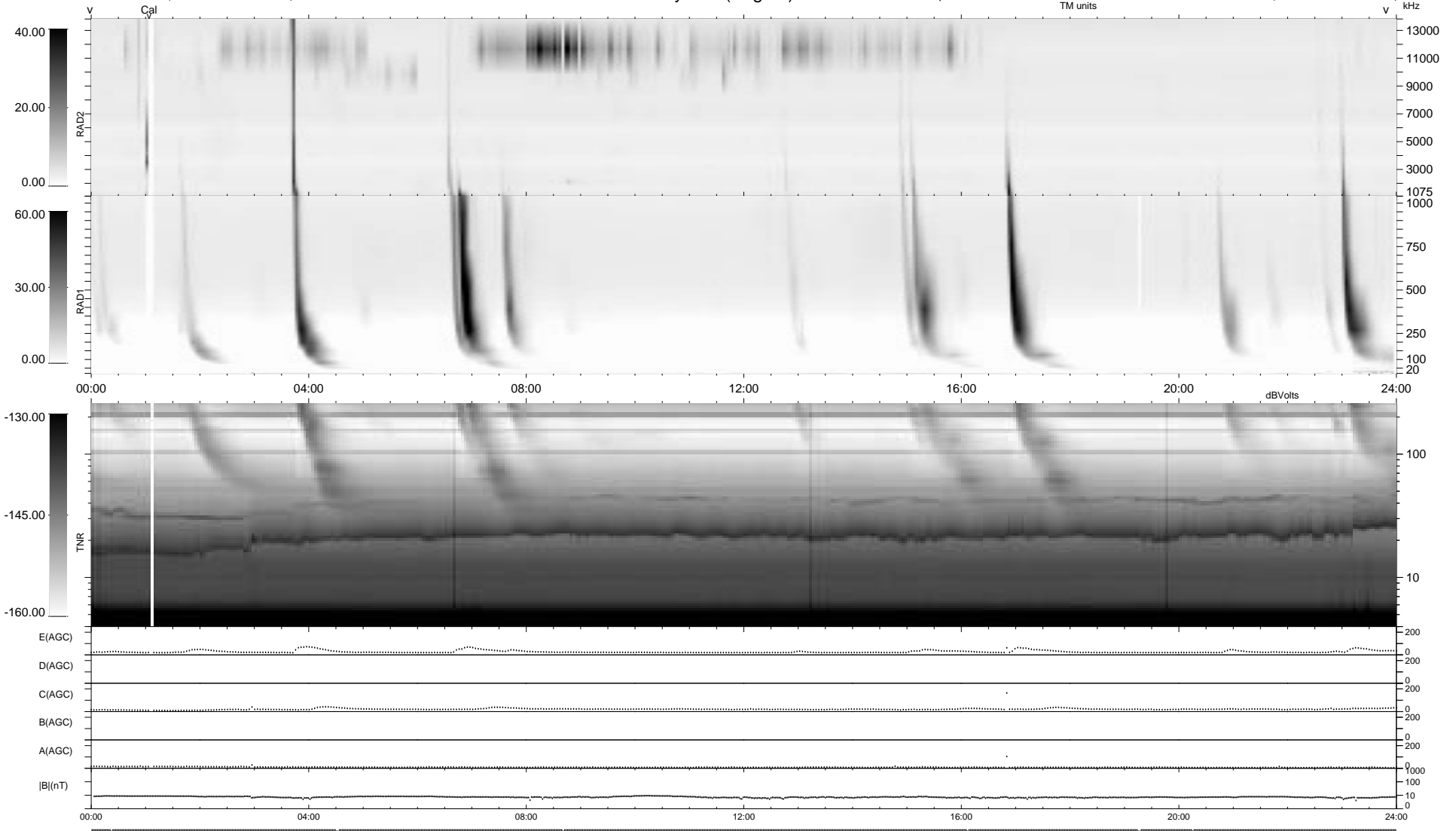
8 bad + 931 good MF/939MF projected (99%) - 0 missing MFs
 Avg interval = 180 secs
 Re = 207.68 (207.11, 7.08, 13.68 GSE)

1.7d VMS-SunOS

LZ version = v01

WIND/WAVES Summary Plot (Page 1) for 07-MAR-1995, DOY = 66

DAILY Thu Sep 25, 2008
 Re = 208.04 (207.34, 9.47, 14.08 GSE)



RAD2
 Antenna Ey
 Mode LIS(0.0)
 SUM/SEP SUM
 Toggle OFF

RAD1
 Antenna Ex
 Mode LIS(0.2)
 SUM/SEP SUM
 Toggle OFF

TNR
 Antenna EyEx
 Mode B-32
 Sweep ACE