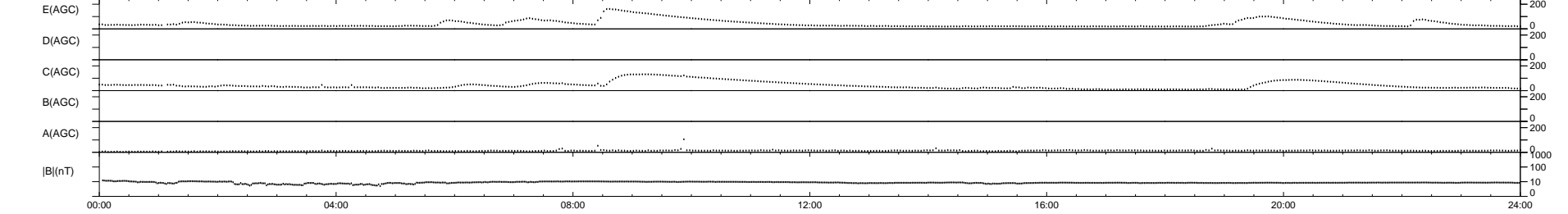
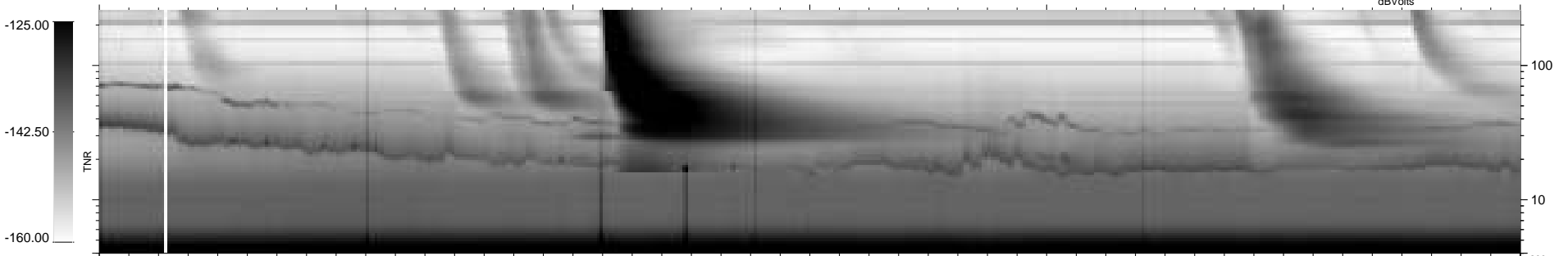
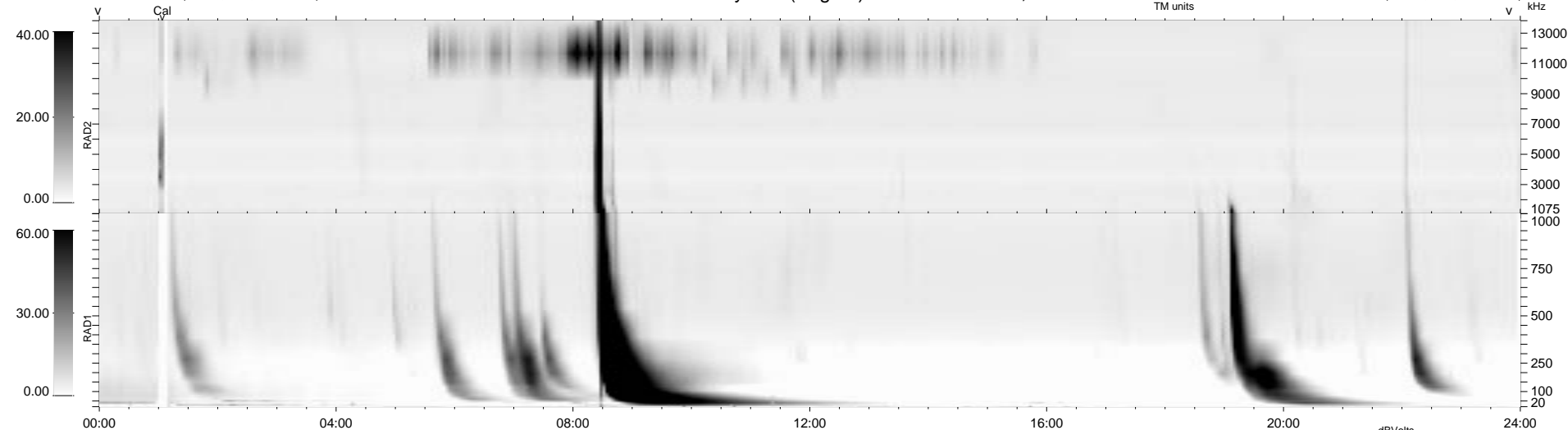


9 bad + 930 good MF/939MF projected (99%) - 0 missing MFs
 Avg interval = 180 secs
 Re = -207.33 (206.86, 4.63, 13.25 GSE)

1.7d VMS-SunOS LZ version = v01

WIND/WAVES Summary Plot (Page 1) for 06-MAR-1995, DOY = 65

DAILY Thu Sep 25, 2008
 Re = 207.68 (207.10, 7.07, 13.68 GSE)



```

RAD2
Antenna Ey .....
Mode LIS(0.0) .....
SUM/SEP SUM .....
Toggle OFF .....

RAD1
Antenna Ex .....
Mode LIS(0.2) .....
SUM/SEP SUM .....
Toggle OFF .....

TNR
Antenna EyEx .....
Mode B-32 .....
Sweep ACE .....
  
```