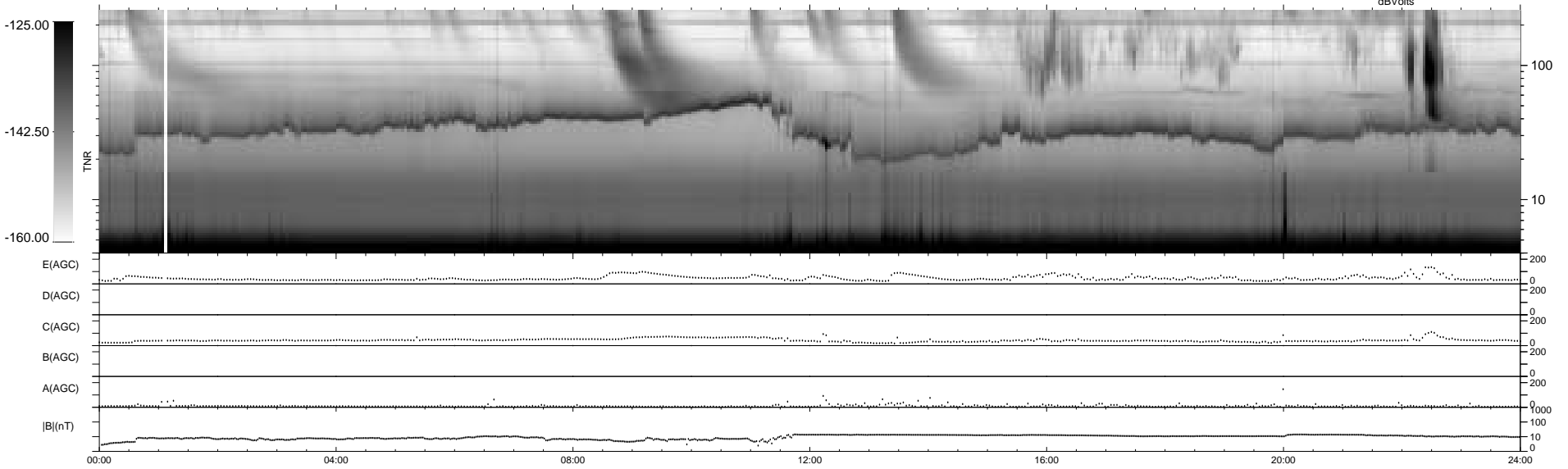
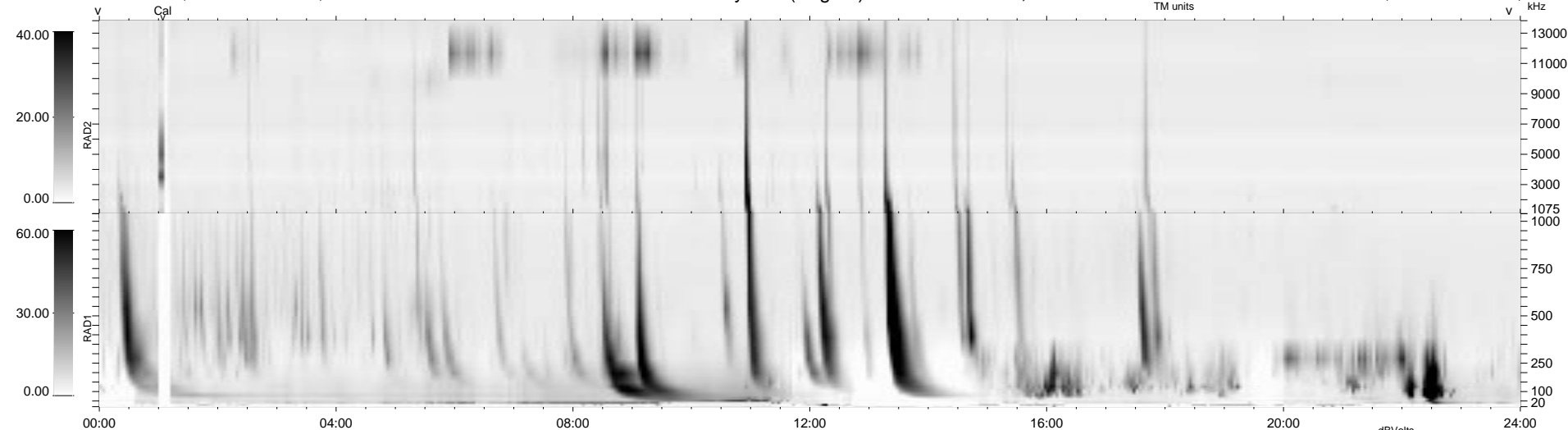


4 bad + 936 good MF/940MF projected (99%) - 0 missing MFs
 Avg interval = 180 secs
 Re = 206.67 (206.30, -0.37, 12.34 GSE)

1.7d VMS-SunOS LZ version = v01

WIND/WAVES Summary Plot (Page 1) for 04-MAR-1995, DOY = 63

DAILY Thu Sep 25, 2008
 Re = 207.00 (206.59, 2.13, 12.81 GSE)



```

RAD2
Antenna Ey
Mode LIS(0.0)
SUM/SEP SUM
Toggle OFF

RAD1
Antenna Ex
Mode LIS(0.2)
SUM/SEP SUM
Toggle OFF

TNR
Antenna EyEx
Mode B-32
Sweep ACE
  
```