

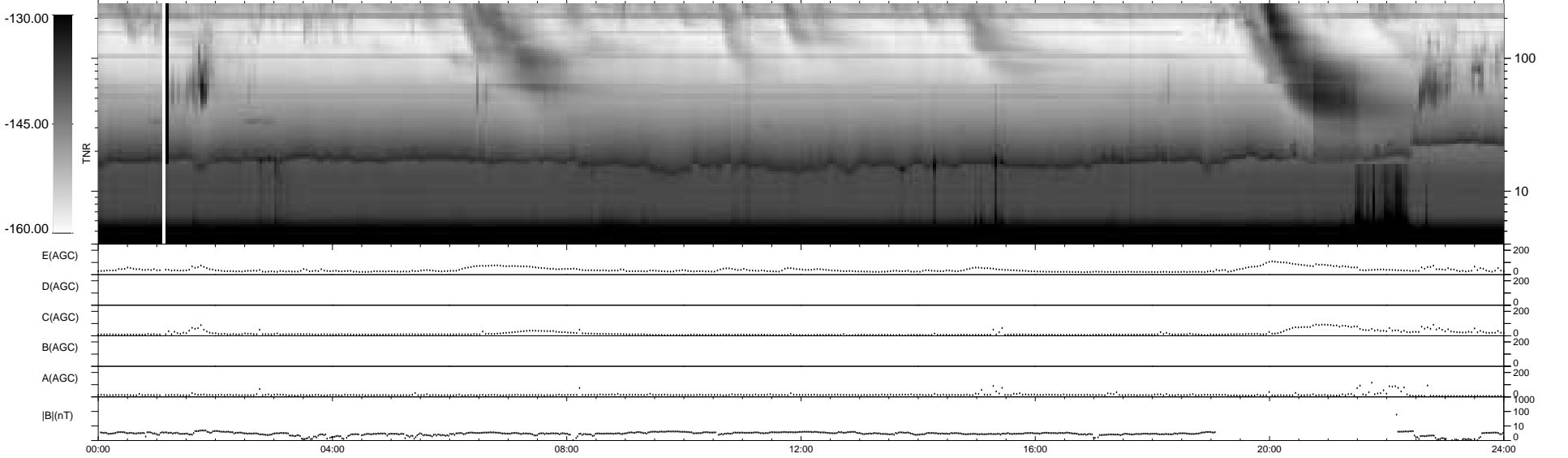
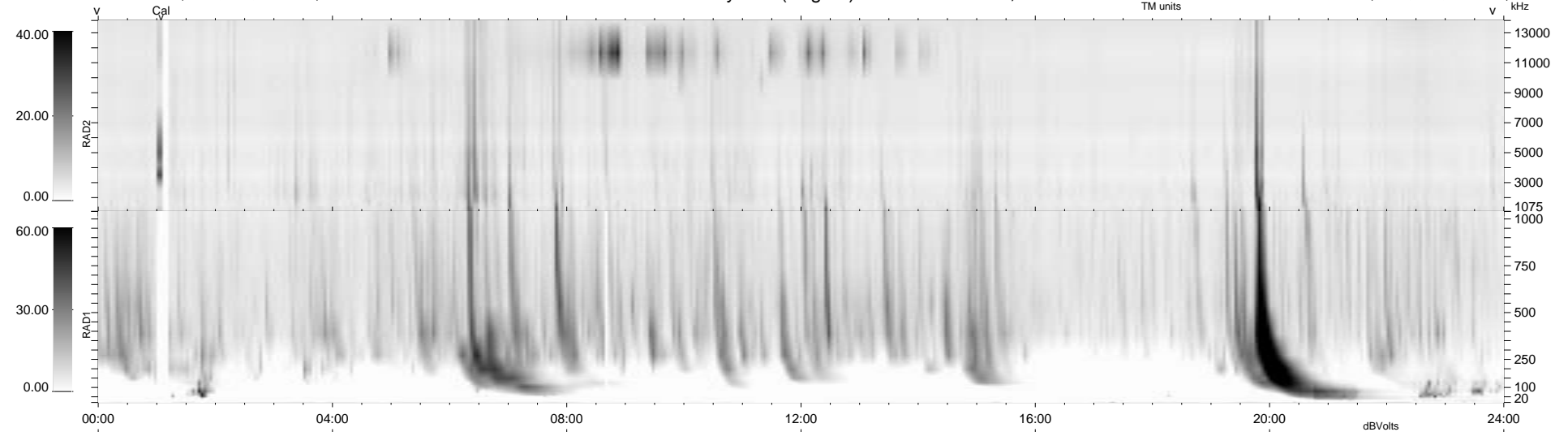
4 bad + 935 good MF/939MF projected (99%) - 0 missing MFs  
 Avg interval = 180 secs  
 Re = - 206.35 (205.99, -2.73, 11.86 GSE)

1.7d VMS-SunOS

LZ version = v01

WIND/WAVES Summary Plot (Page 1) for 03-MAR-1995, DOY = 62

DAILY Thu Sep 25, 2008  
 Re = 206.67 (206.30, -0.39, 12.34 GSE)



RAD2  
 Antenna Ey  
 Mode LIS(0.0)  
 SUM/SEP SUM  
 Toggle OFF

RAD1  
 Antenna Ex  
 Mode LIS(0.2)  
 SUM/SEP SUM  
 Toggle OFF

TNR  
 Antenna EyEx  
 Mode B-32  
 Sweep ACE