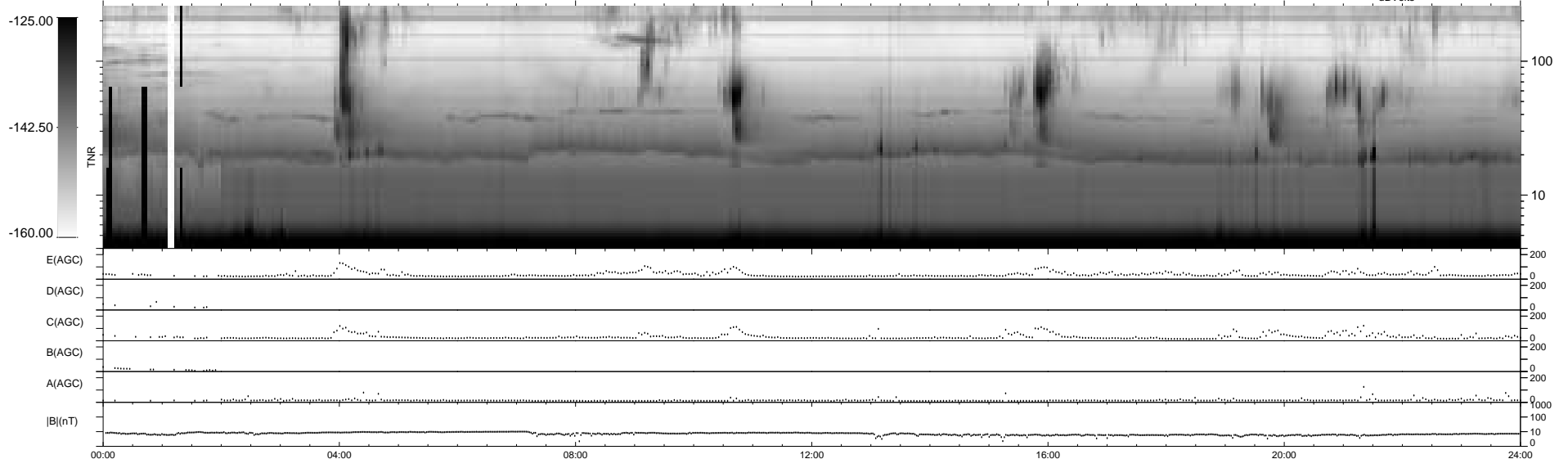
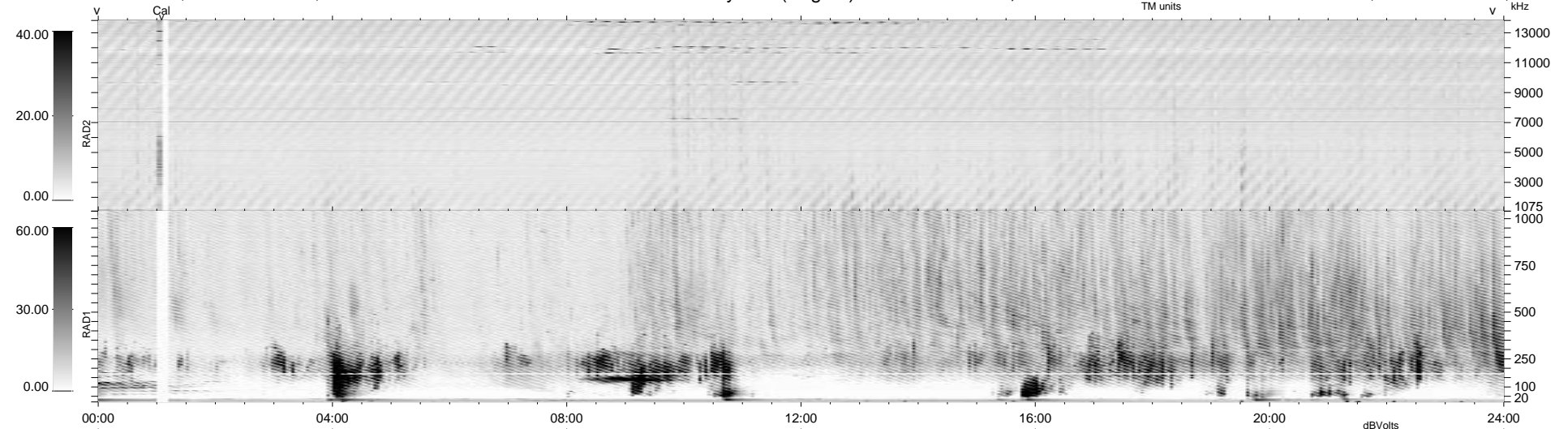


6 bad + 933 good MF/939MF projected (99%) - 0 missing MFs
 Avg interval = 180 secs
 Re = - 205.68 (205.26, -7.43, 10.81 GSE)

1.7d VMS-SunOS LZ version = v01
 DAILY Thu Sep 25, 2008
 Re = 206.02 (205.65, -5.09, 11.34 GSE)

WIND/WAVES Summary Plot (Page 1) for 01-MAR-1995, DOY = 60



```

RAD2
Antenna Ey .....
Mode LIN(1) .....
SUM/SEP SEP .....
Toggle OFF .....

RAD1
Antenna Ex .....
Mode LIN(1) .....
SUM/SEP SEP .....
Toggle OFF .....

TNR
Antenna EyEx .....
Mode B-32 .....
Sweep NN ..... ACE
  
```