

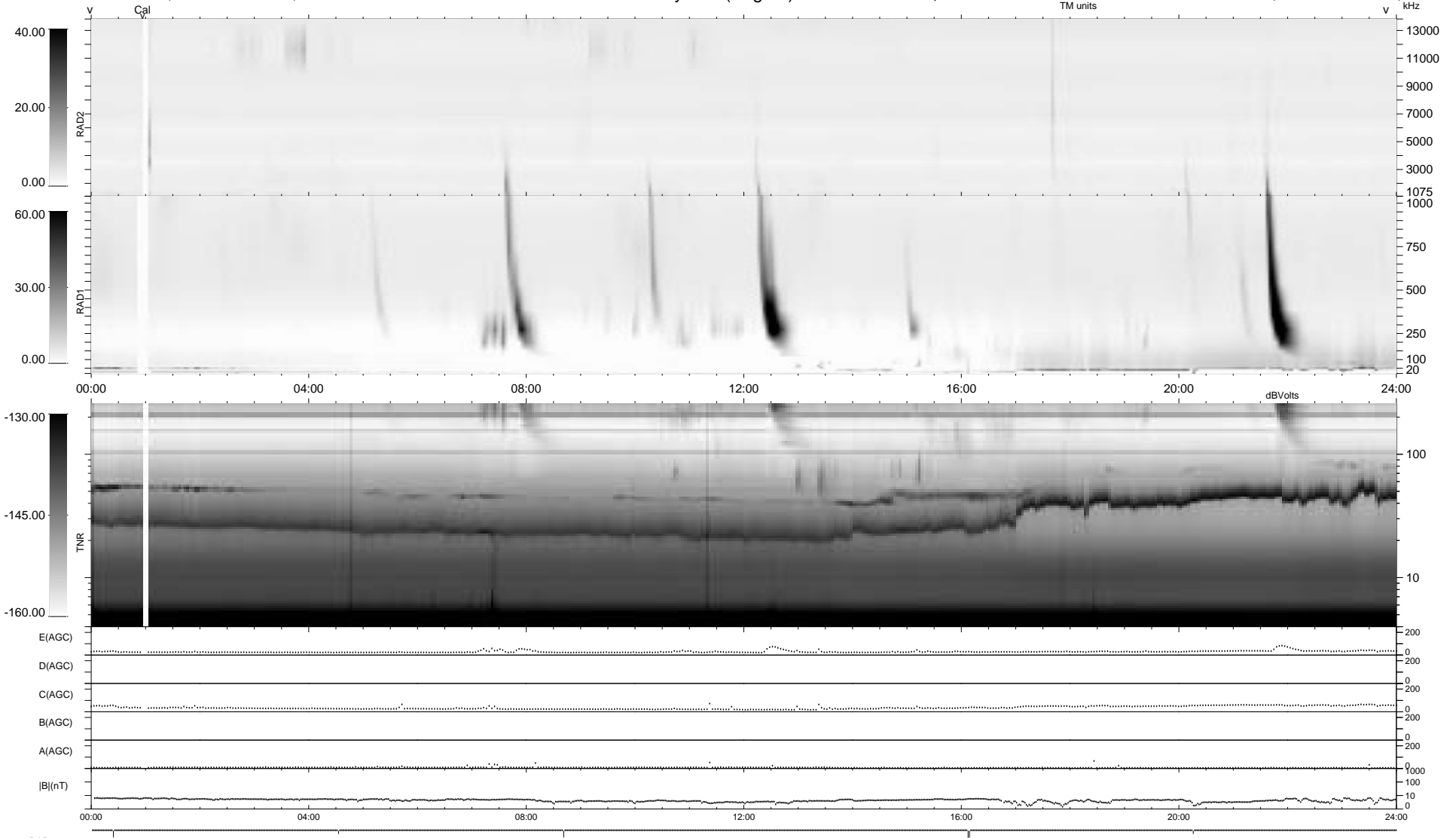
6 bad + 933 good MF/939MF projected (99%) - 0 missing MFs  
 Avg interval = 180 secs  
 Re = 201.05 (198.23, -33.41, 3.11 GSE)

1.7d VMS-SunOS

LZ version = v01

### WIND/WAVES Summary Plot (Page 1) for 17-FEB-1995, DOY = 48

DAILY Thu Sep 25, 2008  
 Re = 201.38 (198.87, -31.51, 3.81 GSE)



RAD2  
 Antenna Ey  
 Mode LIS(0.0)  
 SUM/SEP SUM  
 Toggle OFF

RAD1  
 Antenna Ex  
 Mode LIS(0.2)  
 SUM/SEP SUM  
 Toggle OFF

TNR  
 Antenna EyEx  
 Mode B-32  
 Sweep ACE