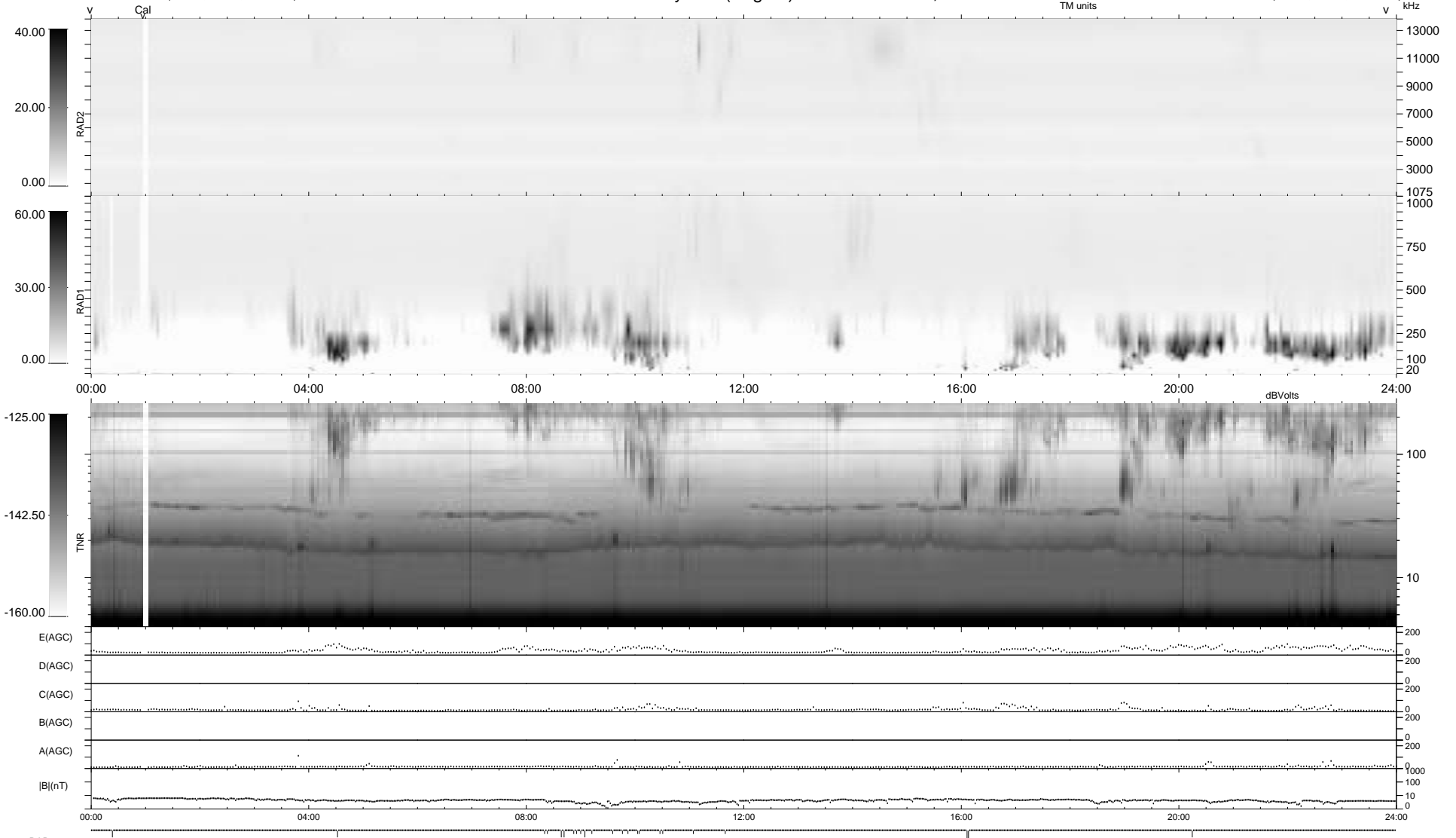


23 bad + 916 good MF/939MF projected (97%) - 0 missing MFs  
 Avg interval = 180 secs  
 Re = -200.45 (196.97, -37.12, 1.70 GSE)

1.7d VMS-SunOS LZ version = v01  
 DAILY Thu Sep 25, 2008  
 Re = 200.74 (197.60, -35.29, 2.40 GSE)

### WIND/WAVES Summary Plot (Page 1) for 15-FEB-1995, DOY = 46



```

RAD2
Antenna Ey .....
Mode LIS(0.0) .....
SUM/SEP SUM .....
Toggle OFF .....

RAD1
Antenna Ex .....
Mode LIS(0.2) .....
SUM/SEP SUM .....
Toggle OFF .....

TNR
Antenna EyEx .....
Mode B-32 .....
Sweep ACE .....
  
```