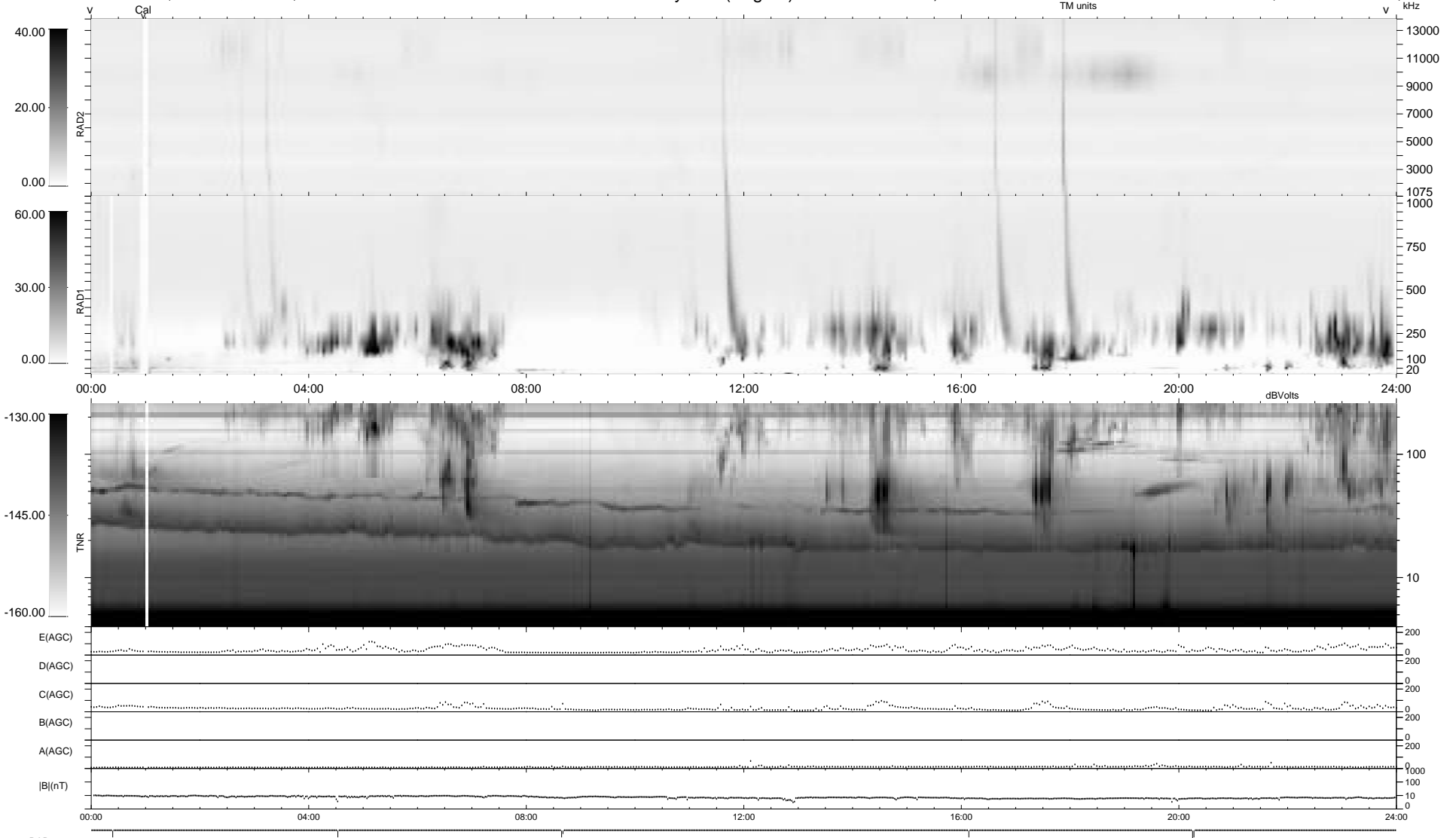


7 bad + 932 good MF/939MF projected (99%) - 0 missing MFs
 Avg interval = 180 secs
 Re = 199.92 (195.73, -40.72, 0.29 GSE)

1.7d VMS-SunOS LZ version = v01
 DAILY Thu Sep 25, 2008
 Re = 200.18 (196.35, -38.95, 0.99 GSE)

WIND/WAVES Summary Plot (Page 1) for 13-FEB-1995, DOY = 44



```

RAD2
Antenna Ey
Mode LIS(0.0)
SUM/SEP SUM
Toggle OFF

RAD1
Antenna Ex
Mode LIS(0.2)
SUM/SEP SUM
Toggle OFF

TNR
Antenna EyEx
Mode B-32
Sweep ACE
  
```