

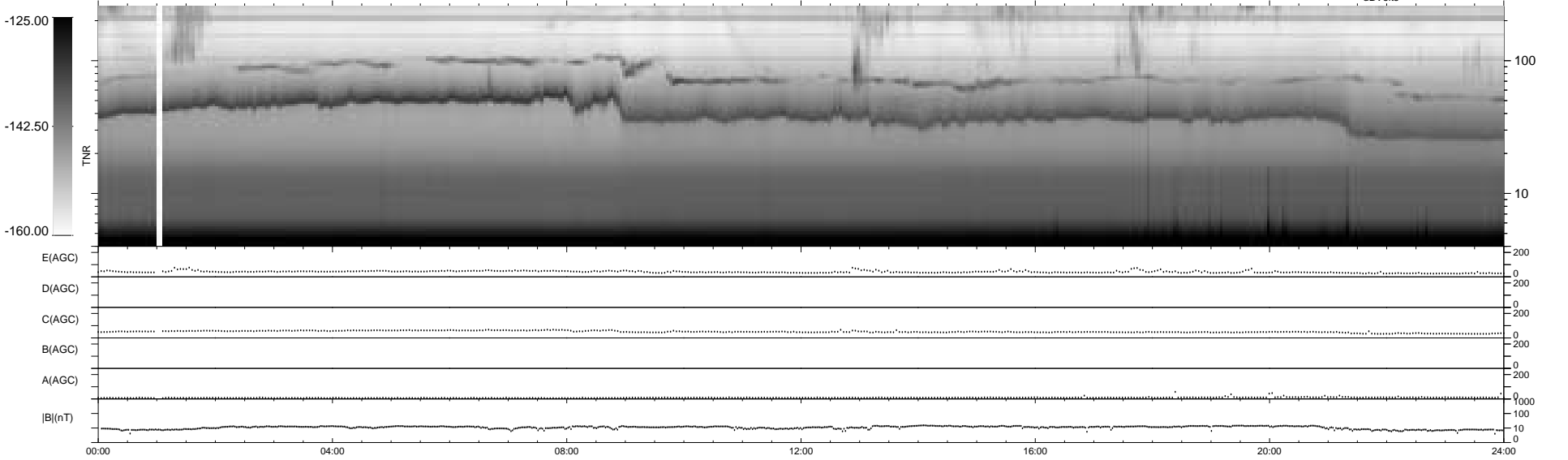
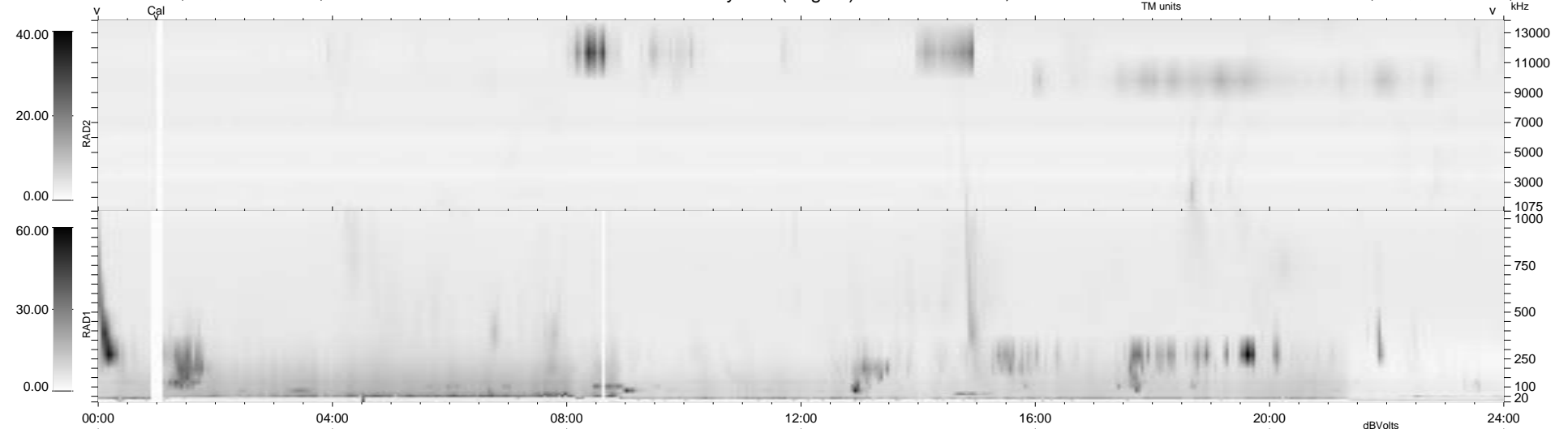
5 bad + 934 good MF/939MF projected (99%) - 0 missing MFs  
 Avg interval = 180 secs  
 Re = 199.43 (194.46, -44.24, -1.10 GSE)

1.7d VMS-SunOS

LZ version = v01

### WIND/WAVES Summary Plot (Page 1) for 11-FEB-1995, DOY = 42

DAILY Thu Sep 25, 2008  
 Re = 199.67 (195.10, -42.50, -0.41 GSE)



```

RAD2
Antenna Ey
Mode LIS(0.0)
SUM/SEP SUM
Toggle OFF

RAD1
Antenna Ex
Mode LIS(0.2)
SUM/SEP SUM
Toggle OFF

TNR
Antenna EyEx
Mode B-32
Sweep ACE
  
```