

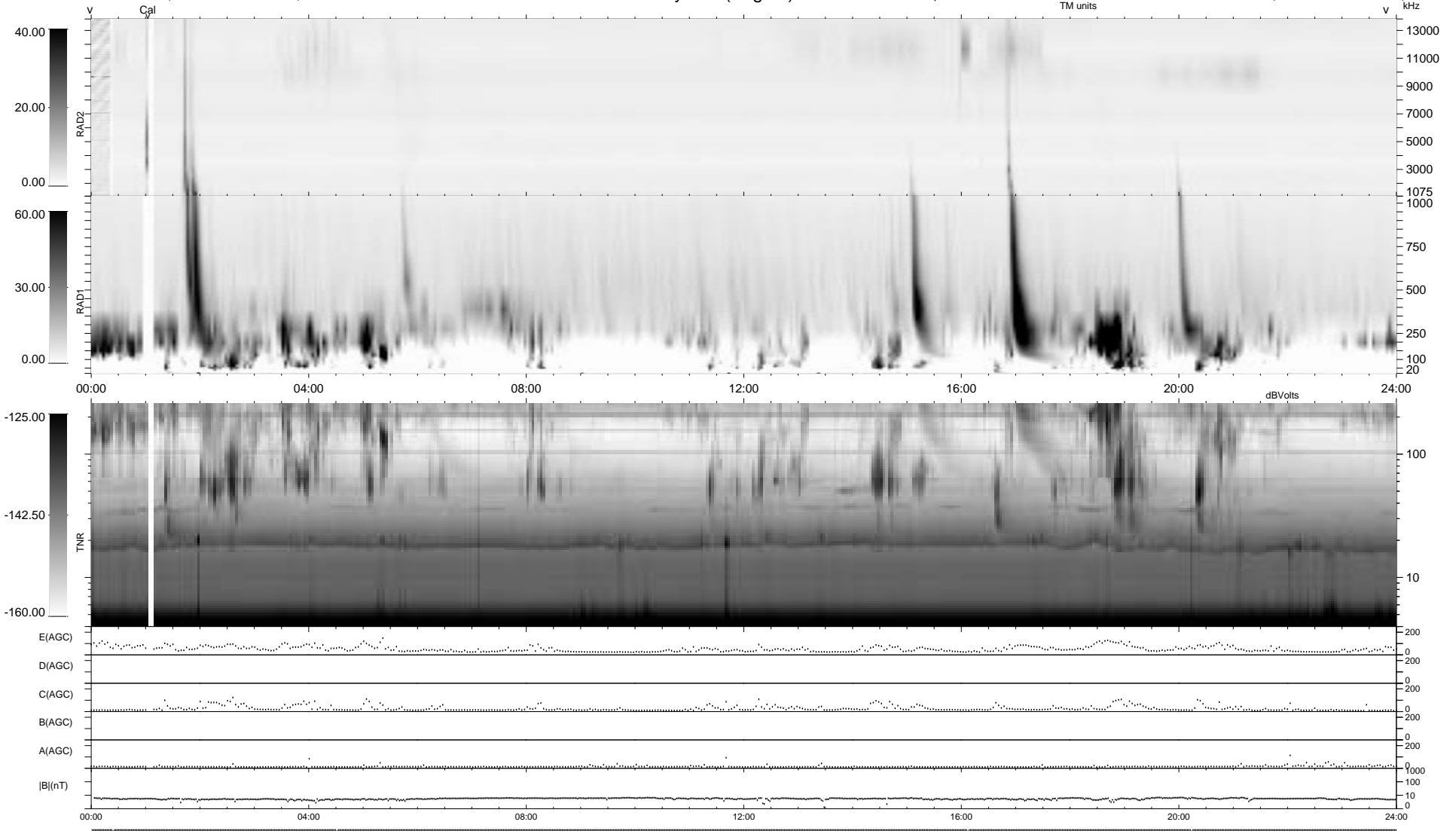
4 bad + 935 good MF/939MF projected (99%) - 0 missing MFs
 Avg interval = 180 secs
 Re = -196.82 (188.07, -57.67, -6.46 GSE)

1.7d VMS-SunOS

LZ version = v01

WIND/WAVES Summary Plot (Page 1) for 03-FEB-1995, DOY = 34

DAILY Thu Sep 25, 2008
 Re = 197.29 (189.06, -56.07, -5.83 GSE)



RAD2
 Antenna Ey
 Mode LIN(1) LIS(0,0)
 SUM/SEP SEP . . . SUM.
 Toggle OFF
 RAD1
 Antenna Ex
 Mode LIS(0,2)
 SUM/SEP SUM
 Toggle OFF
 TNR
 Antenna EyEx
 Mode B-32
 Sweep ACE