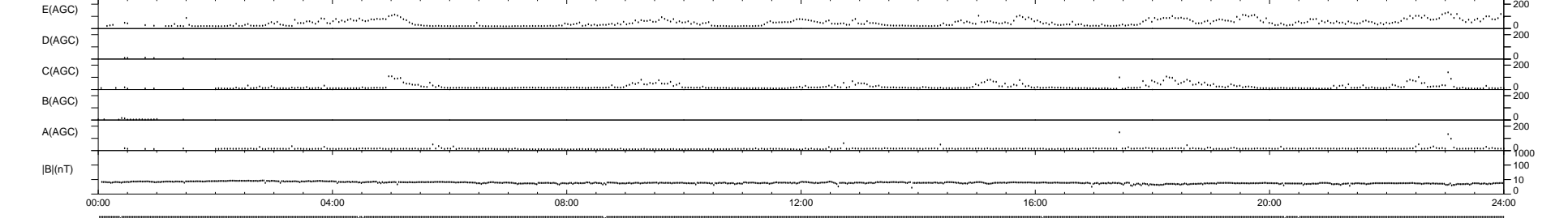
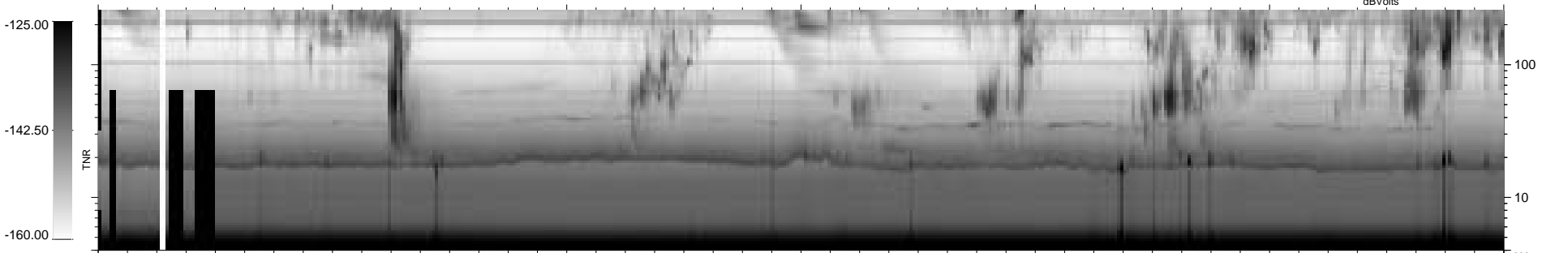
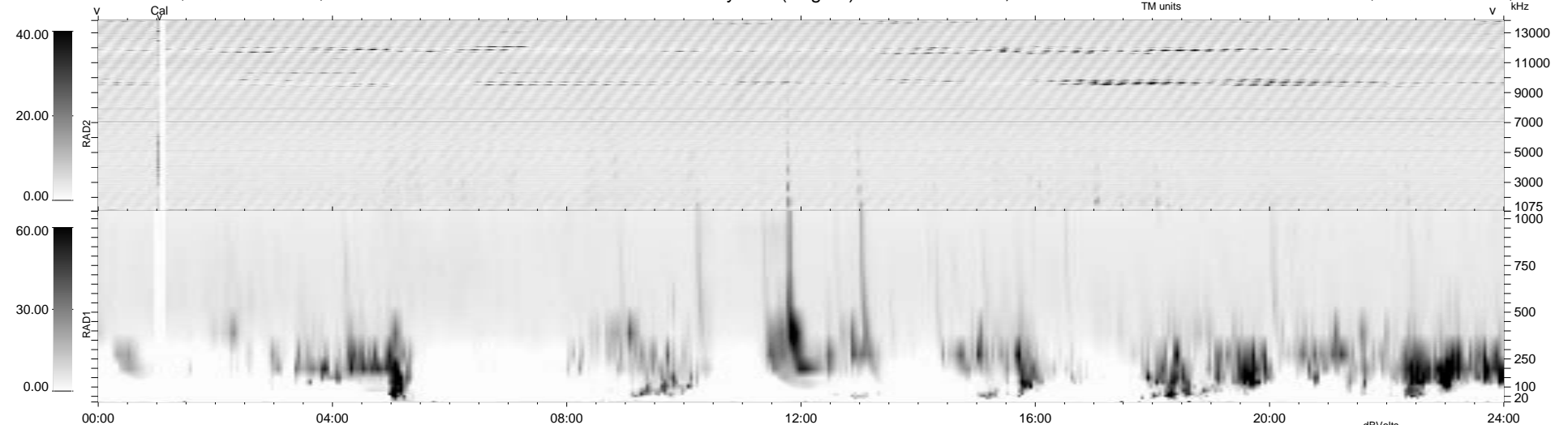


8 bad + 931 good MF/939MF projected (99%) - 0 missing MFs
 Avg interval = 180 secs
 Re = - 196.28 (186.99, -59.25, -7.10 GSE)

1.7d VMS-SunOS LZ version = v01
 DAILY Thu Sep 25, 2008
 Re = 196.82 (188.06, -57.68, -6.47 GSE)

WIND/WAVES Summary Plot (Page 1) for 02-FEB-1995, DOY = 33



```

RAD2
Antenna Ey
Mode LIN(1)
SUM/SEP SEP
Toggle OFF

RAD1
Antenna Ex
Mode LIS(0.2)
SUM/SEP SUM
Toggle OFF

TNR
Antenna EyEx
Mode B-32
Sweep NN ACE
  
```