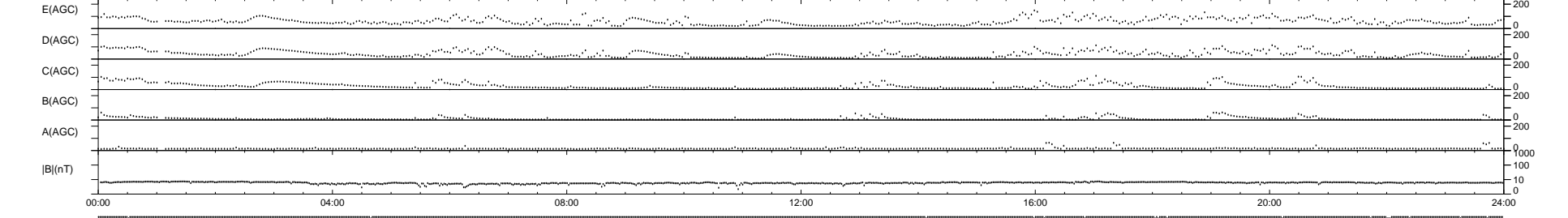
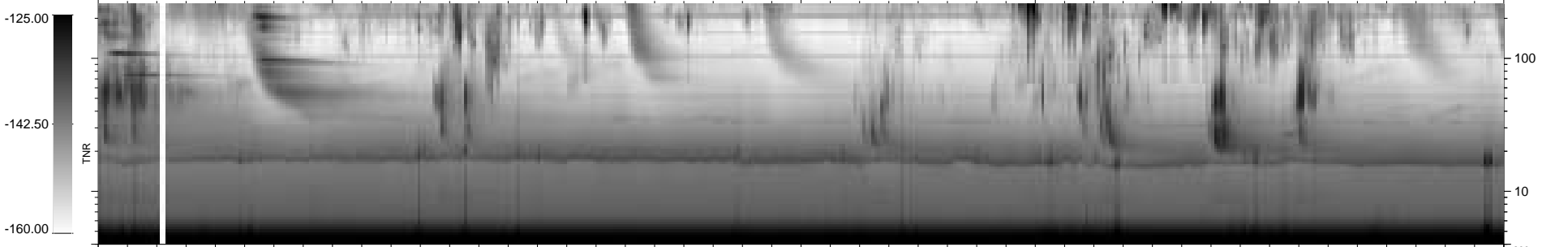
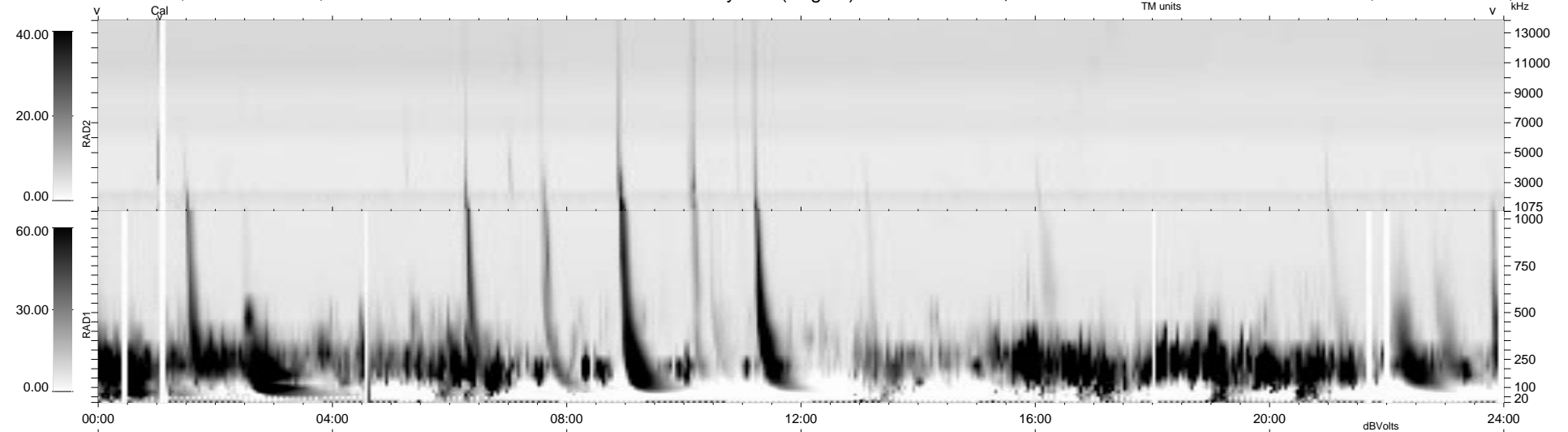


17 bad + 922 good MF/939MF projected (98%) - 0 missing MFs
 Avg interval = 180 secs
 Re = - 194.95 (184.54, -62.30, -8.33 GSE)

1.7d VMS-SunOS LZ version = v01
 DAILY Thu Sep 25, 2008
 Re = 195.66 (185.81, -60.81, -7.73 GSE)

WIND/WAVES Summary Plot (Page 1) for 31-JAN-1995, DOY = 31



```

RAD2
Antenna Ey .....
Mode LIS(3,2)I .....
SUM/SEP SEP .....
Toggle .....

RAD1
Antenna Ex .....
Mode LIS(0,0)I .....
SUM/SEP SEP .....
Toggle .....

TNR
Antenna EyEx .....
Mode B-32 .....
Sweep ABCDE .....
  
```