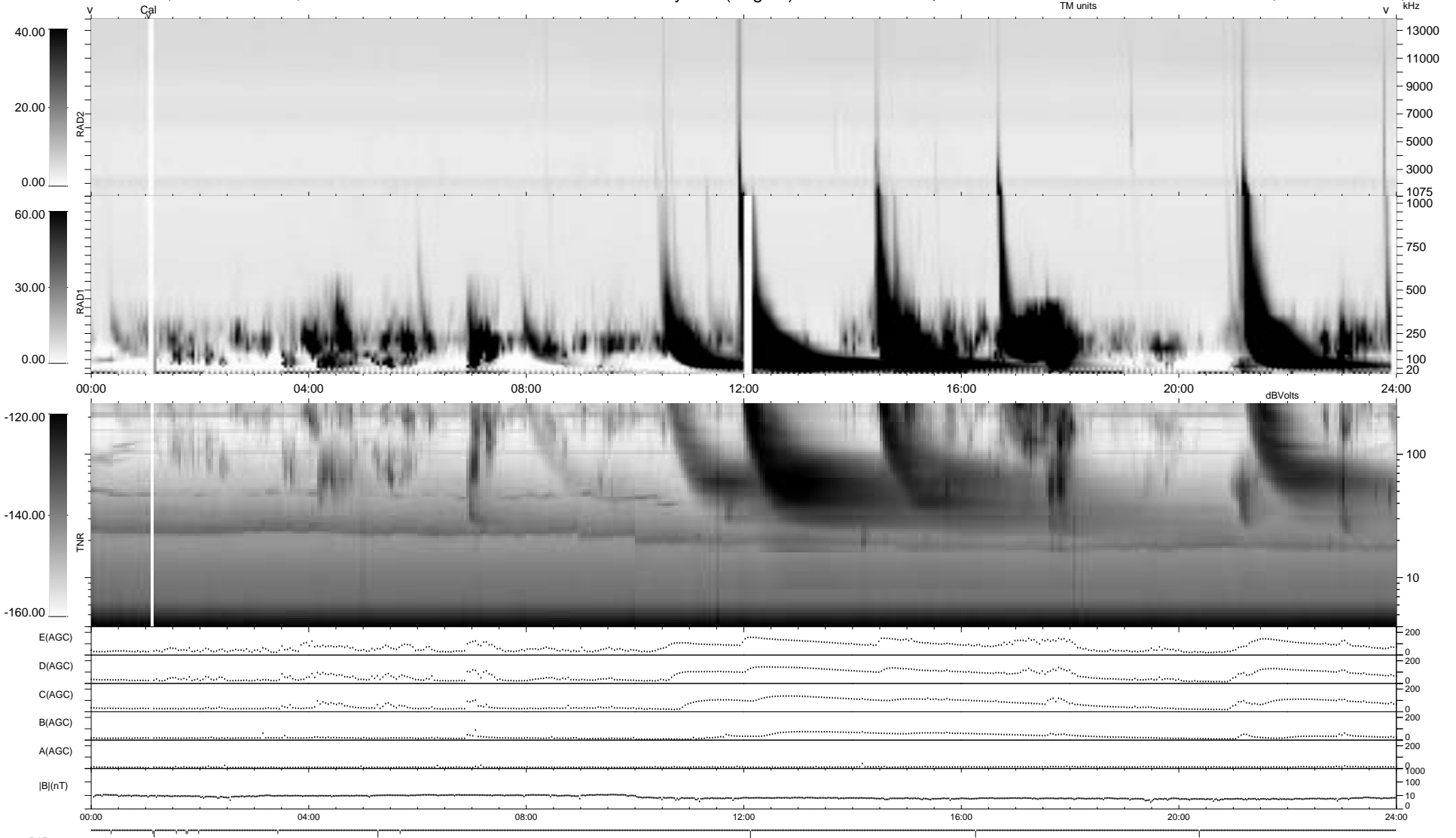


13 bad + 926 good MF/939MF projected (98%) - 0 missing MFs  
 Avg interval = 180 secs  
 Re = 194.14 (183.15, -63.77, -8.94 GSE)

1.7d VMS-SunOS LZ version = v01  
 DAILY Thu Sep 25, 2008  
 Re = 194.95 (184.53, -62.31, -8.34 GSE)

WIND/WAVES Summary Plot (Page 1) for 30-JAN-1995, DOY = 30



RAD2  
 Antenna Ey  
 Mode LIS(3,2)I  
 SUM/SEP SEP  
 Toggle  
 RAD1  
 Antenna Ex  
 Mode LIS(0,0)I  
 SUM/SEP SEP  
 Toggle  
 TNR  
 Antenna EyEx  
 Mode B-32  
 Sweep ABCDE