

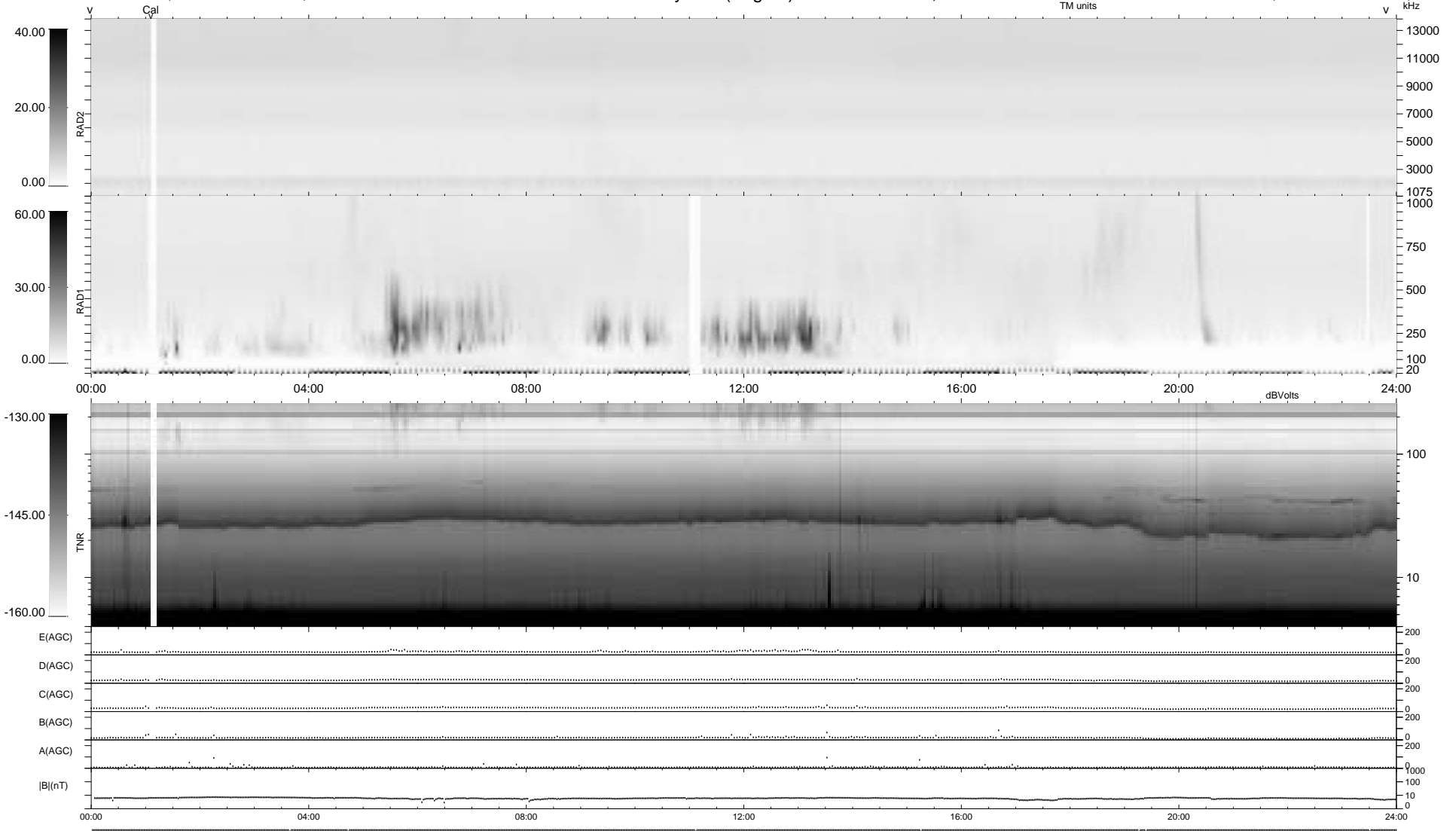
7 bad + 932 good MF/939MF projected (99%) - 0 missing MFs
Avg interval = 180 secs
Re = 188.35 (174.55, -69.91, -11.04 GSE)

1.7d VMS-SunOS

LZ version = v01

WIND/WAVES Summary Plot (Page 1) for 25-JAN-1995, DOY = 25

DAILY Thu Sep 25, 2008
Re = 189.75 (176.48, -68.85, -10.89 GSE)



RAD2
Antenna Ey
Mode LIS(3,2)I
SUM/SEP SEP
Toggle
RAD1
Antenna Ex
Mode LIS(0,0)I
SUM/SEP SEP
Toggle
TNR
Antenna EyEx
Mode B-32
Sweep ABCDE