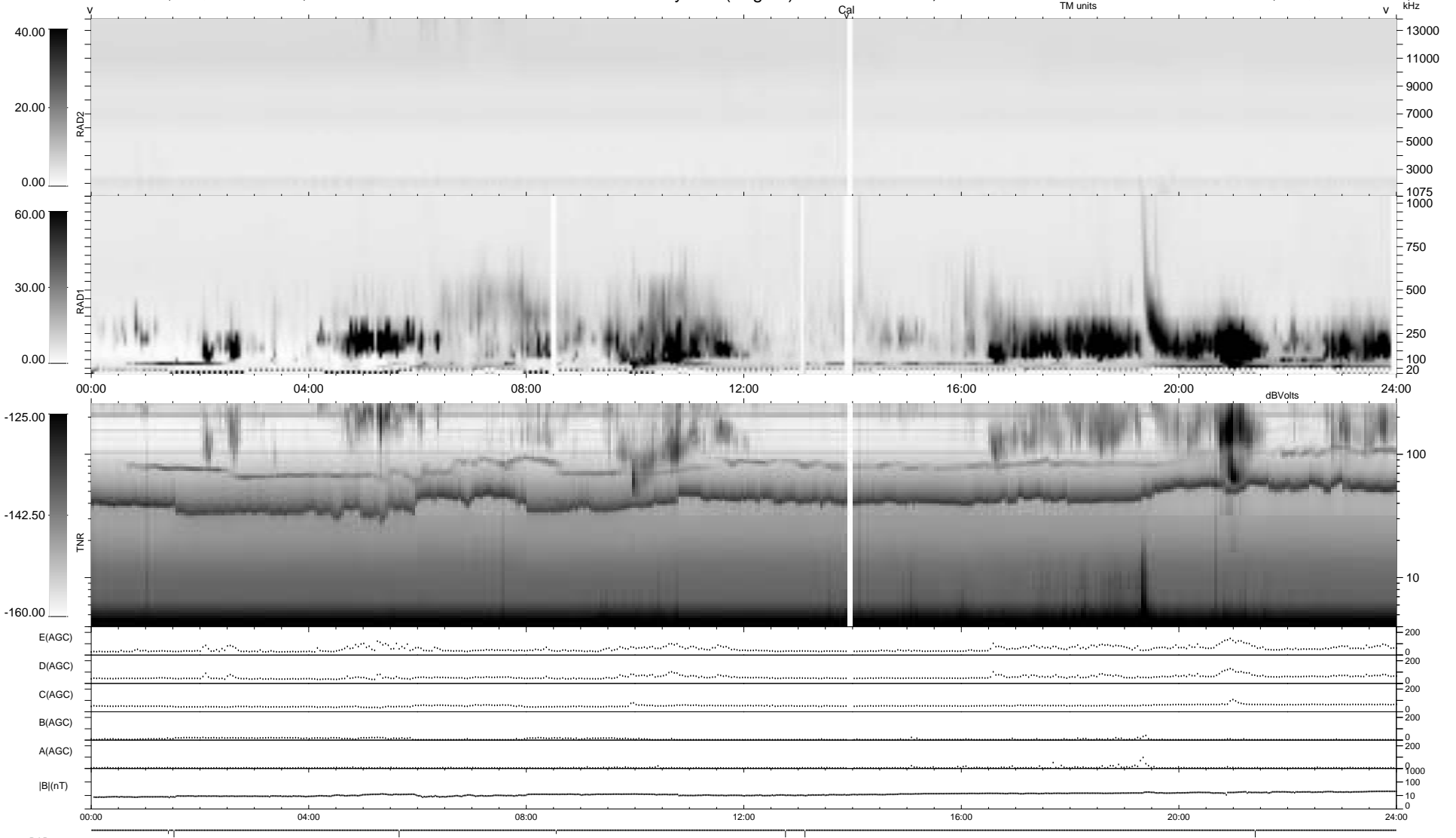


7 bad + 932 good MF/939MF projected (99%) - 0 missing MFs  
 Avg interval = 180 secs  
 Re = 172.53 (154.84, -75.25, -11.28 GSE)

1.7d VMS-SunOS LZ version = v01  
 DAILY Thu Sep 25, 2008  
 Re = 174.96 (157.73, -74.86, -11.35 GSE)

### WIND/WAVES Summary Plot (Page 1) for 17-JAN-1995, DOY = 17



RAD2  
 Antenna Ey  
 Mode LIS(3,2f)  
 SUM/SEP SEP  
 Toggle  
 RAD1  
 Antenna Ex  
 Mode LIS(0,0f)  
 SUM/SEP SEP  
 Toggle  
 TNR  
 Antenna EyEx  
 Mode B-32  
 Sweep ABCDE